

Anti-SSBP1 antibody ab74710

★★★★☆ [1 Abreviews](#) [3 References](#) [3 图像](#)

概述

产品名称	Anti-SSBP1抗体
描述	兔多克隆抗体to SSBP1
宿主	Rabbit
经测试应用	适用于: WB, IHC-P, ICC/IF
种属反应性	与反应: Human 预测可用于: Mouse, Rat 
免疫原	A synthesized peptide derived from internal sequence of human SSBP1.
阳性对照	Human pancreas tissue; extracts from HeLa cells and HUVEC cells; A549 cells.
常规说明	<p>The Life Science industry has been in the grips of a reproducibility crisis for a number of years. Abcam is leading the way in addressing this with our range of recombinant monoclonal antibodies and knockout edited cell lines for gold-standard validation. Please check that this product meets your needs before purchasing.</p> <p>If you have any questions, special requirements or concerns, please send us an inquiry and/or contact our Support team ahead of purchase. Recommended alternatives for this product can be found below, along with publications, customer reviews and Q&As</p>

性能

形式	Liquid
存放说明	Shipped at 4°C. Upon delivery aliquot and store at -20°C. Avoid freeze / thaw cycles.
存储溶液	pH: 7.40 Preservative: 0.02% Sodium azide Constituents: 0.87% Sodium chloride, 50% Glycerol (glycerin, glycerine), PBS
纯度	Without Mg ²⁺ and Ca ²⁺
纯化说明	Immunogen affinity purified Affinity-purified from rabbit antiserum by affinity chromatography using epitope-specific immunogen.
克隆	多克隆
同种型	IgG

应用

The Abpromise guarantee **Abpromise™**承诺保证使用ab74710于以下的经测试应用

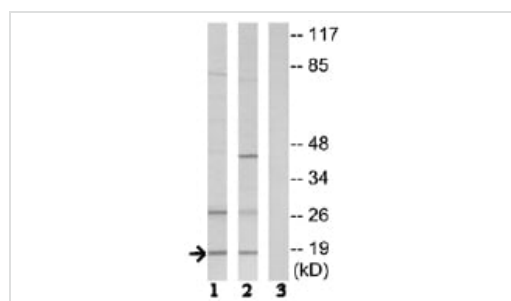
“应用说明”部分 下显示的仅为推荐的起始稀释度;实际最佳的稀释度/浓度应由使用者检定。

应用	Ab评论	说明
WB	★★★★☆ (1)	1/500 - 1/1000. Predicted molecular weight: 17 kDa.
IHC-P		1/50 - 1/100.
ICC/IF		1/500 - 1/1000.

靶标

功能	This protein binds preferentially and cooperatively to ss-DNA. Probably involved in mitochondrial DNA replication.
序列相似性	Contains 1 SSB domain.
翻译后修饰	Phosphorylated upon DNA damage, probably by ATM or ATR.
细胞定位	Mitochondrion.

图片



Western blot - Anti-SSBP1 antibody (ab74710)

All lanes : Anti-SSBP1 antibody (ab74710) at 1/500 dilution

Lane 1 : Extracts from HeLa cells with no peptide

Lane 2 : Extracts from HUVEC cells with no peptide

Lane 3 : Extracts from HUVEC cells with peptide at 5 µg

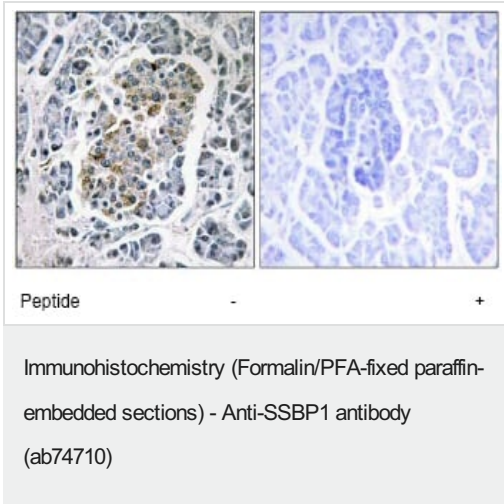
Lysates/proteins at 5 µg per lane.

Predicted band size: 17 kDa

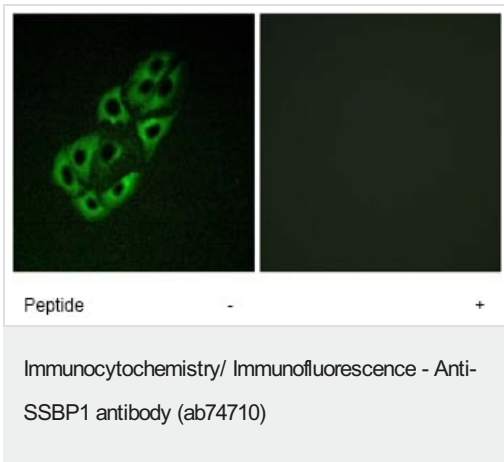
Observed band size: 17 kDa

Additional bands at: 26 kDa, 45 kDa. We are unsure as to the identity of these extra bands.

Secondary antibody - **anti-rabbit HRP (ab6721)**



Immunohistochemical analysis of paraffin-embedded human pancreas tissue using ab74710 at a dilution of 1/50. Left-hand panel: no peptide; right-hand panel: with peptide.



Immunofluorescence analysis of A549 cells, using ab74710 at a dilution of 1/500. Left-hand panel: no peptide; right-hand panel: with peptide.

Please note: All products are "FOR RESEARCH USE ONLY. NOT FOR USE IN DIAGNOSTIC PROCEDURES"

Our Abpromise to you: Quality guaranteed and expert technical support

- Replacement or refund for products not performing as stated on the datasheet
- Valid for 12 months from date of delivery
- Response to your inquiry within 24 hours
- We provide support in Chinese, English, French, German, Japanese and Spanish
- Extensive multi-media technical resources to help you
- We investigate all quality concerns to ensure our products perform to the highest standards

If the product does not perform as described on this datasheet, we will offer a refund or replacement. For full details of the Abpromise, please visit <https://www.abcam.cn/abpromise> or contact our technical team.

Terms and conditions

- Guarantee only valid for products bought direct from Abcam or one of our authorized distributors