

Anti-SRSF5 antibody ab67175

敲除 验证

★★★★★ [1 Abreviews](#) [5 References](#) [5 图像](#)

概述

| | |
|-------|---|
| 产品名称 | Anti-SRSF5抗体 |
| 描述 | 小鼠多克隆抗体to SRSF5 |
| 宿主 | Mouse |
| 经测试应用 | 适用于: WB, IHC-P, ICC/IF |
| 种属反应性 | 与反应: Human |
| 免疫原 | Recombinant full length protein within Human SRSF5. The exact immunogen sequence used to generate this antibody is proprietary information. If additional detail on the immunogen is needed to determine the suitability of the antibody for your needs, please contact our Scientific Support team to discuss your requirements. |
| 阳性对照 | HEK-293T, HeLa and Hep G2 cell lysates; Human liver tissue lysate. Human ovary tissue sections. Hela cells. SRSF5 transfected 293T cell lysate |
| 常规说明 | <p>The Life Science industry has been in the grips of a reproducibility crisis for a number of years. Abcam is leading the way in addressing this with our range of recombinant monoclonal antibodies and knockout edited cell lines for gold-standard validation. Please check that this product meets your needs before purchasing.</p> <p>If you have any questions, special requirements or concerns, please send us an inquiry and/or contact our Support team ahead of purchase. Recommended alternatives for this product can be found below, along with publications, customer reviews and Q&As</p> |

性能

| | |
|------|---|
| 形式 | Liquid |
| 存放说明 | Shipped at 4°C. Upon delivery aliquot and store at -20°C or -80°C. Avoid repeated freeze / thaw cycles. |
| 存储溶液 | pH: 7.40 Constituent: 100% PBS |
| 纯度 | Protein A purified |
| 克隆 | 多克隆 |
| 同种型 | IgG |

应用

The Abpromise guarantee **Abpromise™**承诺保证使用ab67175于以下的经测试应用

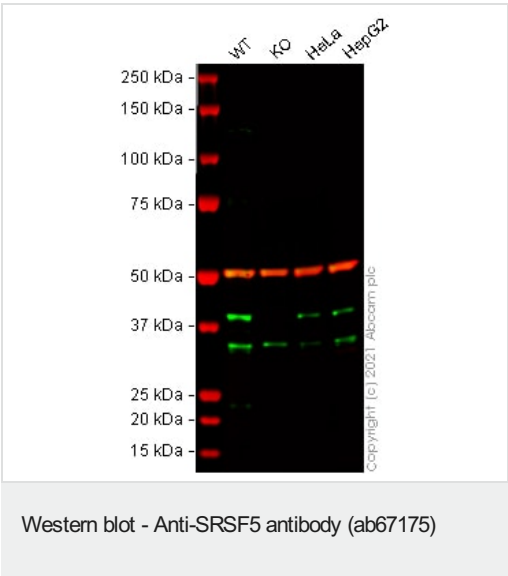
“应用说明”部分 下显示的仅为推荐的起始稀释度;实际最佳的稀释度/浓度应由使用者检定。

| 应用 | Ab评论 | 说明 |
|--------|-----------|--|
| WB | ★★★★★ (1) | 1/500 - 1/1000. Detects a band of approximately 39 kDa (predicted molecular weight: 31 kDa). |
| IHC-P | | Use a concentration of 1.5 µg/ml. |
| ICC/IF | | Use at an assay dependent dilution. NOTE: Product requires purification with Protein A prior to use in ICC/IF and IHC-P. |

靶标

| | |
|-------|---|
| 功能 | Plays a role in constitutive splicing and can modulate the selection of alternative splice sites. |
| 序列相似性 | Belongs to the splicing factor SR family. Contains 2 RRM (RNA recognition motif) domains. |
| 翻译后修饰 | Extensively phosphorylated on serine residues in the RS domain. |
| 细胞定位 | Nucleus. |

图片



All lanes : Anti-SRSF5 antibody (ab67175) at 1/500 dilution

- Lane 1 : Wild-type HEK-293T cell lysate
- Lane 2 : SRSF5 knockout HEK-293T cell lysate
- Lane 3 : HeLa cell lysate
- Lane 4 : HepG2 cell lysate

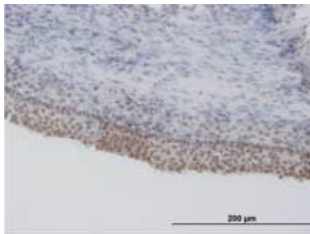
Lysates/proteins at 20 µg per lane.

Performed under reducing conditions.

Predicted band size: 31 kDa
Observed band size: 40 kDa

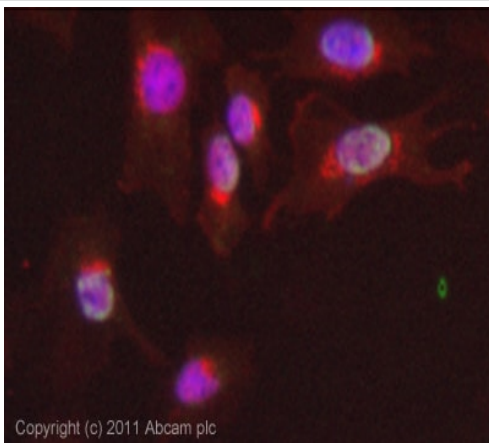
Lanes 1 -4: Merged signal (red and green). Green - ab67175 observed at 40 kDa. Red - loading control **ab52866** (Rabbit anti-alpha Tubulin antibody [EP1332Y]) observed at 55 kDa.

ab67175 was shown to react with SRSF5 in wild-type HEK-293T cells in Western blot with loss of signal observed in SRSF5 knockout cell line [ab266246](#) (SRSF5 knockout cell lysate [ab258704](#)). Wild-type HEK-293T and SRSF5 knockout cell lysates were subjected to SDS-PAGE. Membranes were blocked in fluorescent western blot (TBS-based) blocking solution before incubation with ab67175 and [ab52866](#) (Rabbit anti-alpha Tubulin antibody [EP1332Y]) overnight at 4 °C at a 1 in 500 dilution and a 1 in 20000 dilution respectively. Blots were incubated with Goat anti-Mouse IgG H&L (IRDye® 800CW) preabsorbed ([ab216772](#)) and Goat anti-Rabbit IgG H&L (IRDye® 680RD) preabsorbed ([ab216777](#)) secondary antibodies at 1 in 20000 dilution for 1 h at room temperature before imaging.



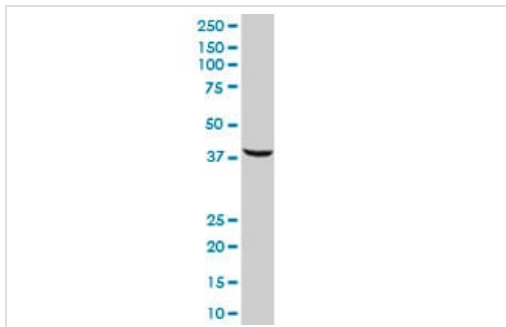
Immunohistochemistry (Formalin/PFA-fixed paraffin-embedded sections) - Anti-SRSF5 antibody (ab67175)

ab67175, at 1.5µg/ml, staining SRSF5 in human ovary by immunohistochemistry using formalin-fixed, paraffin-embedded tissue.



Immunocytochemistry/ Immunofluorescence - Anti-SRSF5 antibody (ab67175)

ICC/IF image of ab67175 stained HeLa cells. The cells were 4% formaldehyde fixed (10 min) and then incubated in 1%BSA / 10% normal goat serum / 0.3M glycine in 0.1% PBS-Tween for 1h to permeabilise the cells and block non-specific protein-protein interactions. The cells were then incubated with the antibody (ab67175, 1µg/ml) overnight at +4°C. The secondary antibody (green) was Alexa Fluor® 488 goat anti-mouse IgG (H+L) used at a 1/1000 dilution for 1h. Alexa Fluor® 594 WGA was used to label plasma membranes (red) at a 1/200 dilution for 1h. DAPI was used to stain the cell nuclei (blue) at a concentration of 1.43µM.



Western blot - Anti-SRSF5 antibody (ab67175)

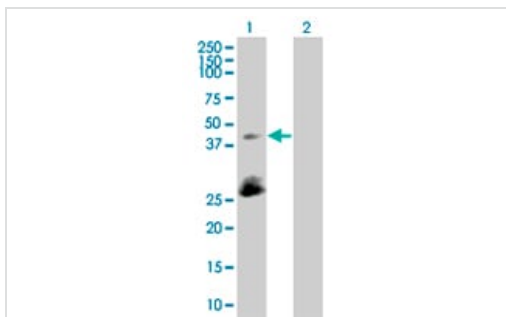
Anti-SRSF5 antibody (ab67175) at 1/500 dilution + human liver tissue lysate at 25 µg/ml

Secondary

Goat Anti-Mouse IgG (H&L)-HRP Conjugate at 1/2500 dilution

Predicted band size: 31 kDa

Observed band size: 39 kDa



Western blot - Anti-SRSF5 antibody (ab67175)

All lanes : Anti-SRSF5 antibody (ab67175) at 1/500 dilution

Lane 1 : SRSF5 transfected 293T cell lysate

Lane 2 : Non-transfected 293T cell lysate

Lysates/proteins at 25 µg/ml per lane.

Secondary

All lanes : Goat Anti-Mouse IgG (H&L)-HRP Conjugate at 1/2500 dilution

Predicted band size: 31 kDa

Observed band size: 39 kDa

Additional bands at: 27 kDa. We are unsure as to the identity of these extra bands.

Please note: All products are "FOR RESEARCH USE ONLY. NOT FOR USE IN DIAGNOSTIC PROCEDURES"

Our Abpromise to you: Quality guaranteed and expert technical support

- Replacement or refund for products not performing as stated on the datasheet
- Valid for 12 months from date of delivery
- Response to your inquiry within 24 hours
- We provide support in Chinese, English, French, German, Japanese and Spanish
- Extensive multi-media technical resources to help you
- We investigate all quality concerns to ensure our products perform to the highest standards

If the product does not perform as described on this datasheet, we will offer a refund or replacement. For full details of the Abpromise, please visit <https://www.abcam.cn/abpromise> or contact our technical team.

Terms and conditions

- Guarantee only valid for products bought direct from Abcam or one of our authorized distributors