

Anti-SRSF3 antibody ab73891

★★★★★ [5 Abreviews](#) [9 References](#) [2 图像](#)

概述

产品名称	Anti-SRSF3抗体
描述	兔多克隆抗体to SRSF3
宿主	Rabbit
经测试应用	适用于: WB, ICC/IF
种属反应性	与反应: Human
免疫原	Synthetic peptide corresponding to Human SRSF3 (internal sequence).
常规说明	<p>The Life Science industry has been in the grips of a reproducibility crisis for a number of years. Abcam is leading the way in addressing this with our range of recombinant monoclonal antibodies and knockout edited cell lines for gold-standard validation. Please check that this product meets your needs before purchasing.</p> <p>If you have any questions, special requirements or concerns, please send us an inquiry and/or contact our Support team ahead of purchase. Recommended alternatives for this product can be found below, along with publications, customer reviews and Q&As</p>

性能

形式	Liquid
存放说明	Shipped at 4°C. Upon delivery aliquot and store at -20°C. Avoid repeated freeze / thaw cycles.
存储溶液	pH: 7 Preservative: 0.02% Sodium azide Constituents: 50% Glycerol (glycerin, glycerine), 0.87% Sodium chloride, PBS
纯度	Without Mg2+ and Ca2+
克隆	Immunogen affinity purified
同种型	多克隆 IgG

应用

The Abpromise guarantee [Abpromise™](#)承诺保证使用ab73891于以下的经测试应用

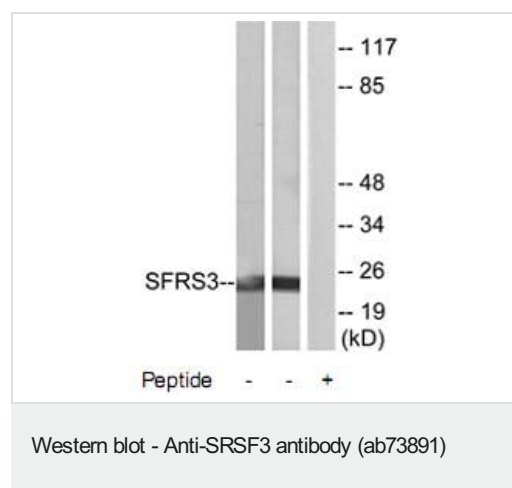
“应用说明”部分 下显示的仅为推荐的起始稀释度;实际最佳的稀释度/浓度应由使用者检定。

应用	Ab评论	说明
WB	★★★★★ (4)	1/500 - 1/1000. Predicted molecular weight: 19 kDa.
ICC/IF		1/500 - 1/1000.

靶标

功能	May be involved in RNA processing in relation with cellular proliferation and/or maturation.
序列相似性	Belongs to the splicing factor SR family. Contains 1 RRM (RNA recognition motif) domain.
翻译后修饰	Extensively phosphorylated on serine residues in the RS domain.
细胞定位	Nucleus.

图片



All lanes : Anti-SRSF3 antibody (ab73891) at 1/500 dilution

Lane 1 : extracts from HeLa cells

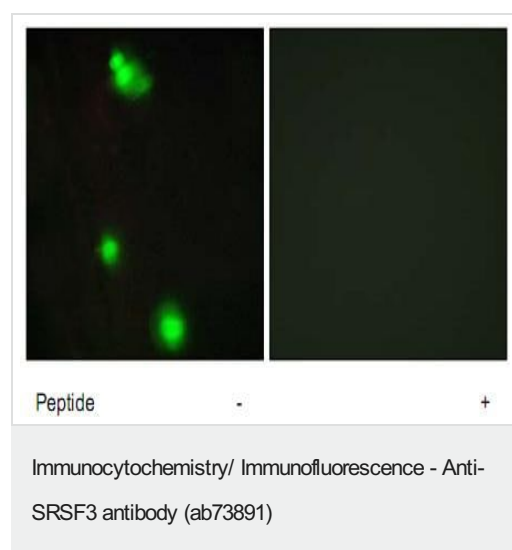
Lane 2 : extracts from Jurkat cells

Lane 3 : extracts from Jurkat cells with immunizing peptide at 10 µg

Lysates/proteins at 30 µg per lane.

Predicted band size: 19 kDa

Observed band size: 19 kDa



Left panel: immunofluorescence analysis of MCF7 cells, using 1/500-1/1000 ab73891; Right panel: same, after pre-incubation with the immunizing peptide.

Please note: All products are "FOR RESEARCH USE ONLY. NOT FOR USE IN DIAGNOSTIC PROCEDURES"

Our Abpromise to you: Quality guaranteed and expert technical support

- Replacement or refund for products not performing as stated on the datasheet
- Valid for 12 months from date of delivery
- Response to your inquiry within 24 hours
- We provide support in Chinese, English, French, German, Japanese and Spanish
- Extensive multi-media technical resources to help you
- We investigate all quality concerns to ensure our products perform to the highest standards

If the product does not perform as described on this datasheet, we will offer a refund or replacement. For full details of the Abpromise, please visit <https://www.abcam.cn/abpromise> or contact our technical team.

Terms and conditions

- Guarantee only valid for products bought direct from Abcam or one of our authorized distributors