

Anti-SREBP2 antibody ab112046

★★★★★ [2 Abreviews](#) [5 References](#) [2 图像](#)

概述

产品名称	Anti-SREBP2抗体
描述	兔多克隆抗体to SREBP2
宿主	Rabbit
经测试应用	适用于: WB, IP
种属反应性	与反应: Human 预测可用于: Rat, Horse, Chicken, Guinea pig, Cow, Dog, Pig, Chimpanzee, Ferret, Rhesus monkey, Gorilla, Chinese hamster, Orangutan 
免疫原	Synthetic peptide corresponding to Human SREBP2 aa 300-350. Database link: Q12772
阳性对照	HeLa and 293T whole cell lysate
常规说明	<p>The Life Science industry has been in the grips of a reproducibility crisis for a number of years. Abcam is leading the way in addressing this with our range of recombinant monoclonal antibodies and knockout edited cell lines for gold-standard validation. Please check that this product meets your needs before purchasing.</p> <p>If you have any questions, special requirements or concerns, please send us an inquiry and/or contact our Support team ahead of purchase. Recommended alternatives for this product can be found below, along with publications, customer reviews and Q&As</p>

性能

形式	Liquid
存放说明	Shipped at 4°C. Upon delivery aliquot and store at -20°C. Avoid freeze / thaw cycles.
存储溶液	pH: 7.00 Preservative: 0.09% Sodium azide Constituent: 99% Tris citrate/phosphate
纯度	Immunogen affinity purified
克隆	多克隆
同种型	IgG

应用

The Abpromise guarantee

Abpromise™ 承诺保证使用 ab112046 于以下的经测试应用

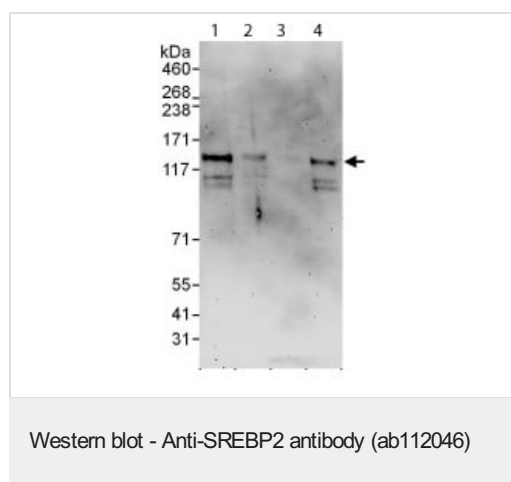
“应用说明”部分 下显示的仅为推荐的起始稀释度;实际最佳的稀释度/浓度应由使用者检定。

应用	Ab 评论	说明
WB	★★★★★ (2)	1/1000 - 1/5000. Predicted molecular weight: 124 kDa.
IP		Use at 2-10 µg/mg of lysate.

靶标

功能	Transcriptional activator required for lipid homeostasis. Regulates transcription of the LDL receptor gene as well as the cholesterol and to a lesser degree the fatty acid synthesis pathway (By similarity). Binds the sterol regulatory element 1 (SRE-1) (5'-ATCACCCAC-3') found in the flanking region of the LDRL and HMG-CoA synthase genes.
组织特异性	Ubiquitously expressed in adult and fetal tissues.
序列相似性	Belongs to the SREBP family. Contains 1 basic helix-loop-helix (bHLH) domain.
翻译后修饰	At low cholesterol the SCAP/SREBP complex is recruited into COPII vesicles for export from the ER. In the Golgi complex SREBPs are cleaved sequentially by site-1 and site-2 protease. The first cleavage by site-1 protease occurs within the luminal loop, the second cleavage by site-2 protease occurs within the first transmembrane domain and releases the transcription factor from the Golgi membrane. Apoptosis triggers cleavage by the cysteine proteases caspase-3 and caspase-7.
细胞定位	Nucleus and Endoplasmic reticulum membrane. Golgi apparatus membrane. Cytoplasmic vesicle > COPII-coated vesicle membrane. Moves from the endoplasmic reticulum to the Golgi in the absence of sterols.

图片



All lanes : Anti-SREBP2 antibody (ab112046) at 0.4 µg/ml

Lane 1 : HeLa whole cell lysate at 50 µg

Lane 2 : HeLa whole cell lysate at 15 µg

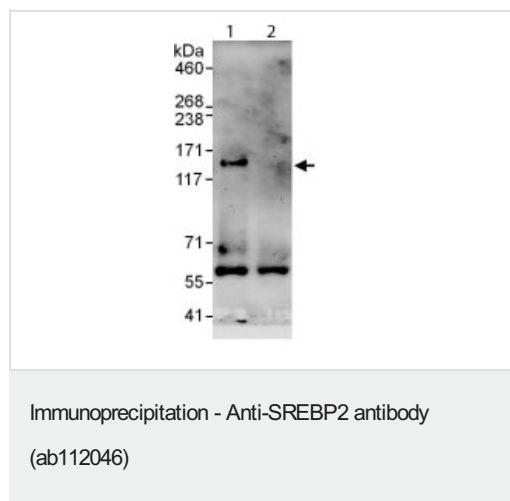
Lane 3 : HeLa whole cell lysate at 5 µg

Lane 4 : 293T whole cell lysate at 50 µg

Developed using the ECL technique.

Predicted band size: 124 kDa

Exposure time: 3 minutes



Detection of SREBP2 by Western Blot of Immunoprecipitate.

Lane 1: ab112046 at 1µg/ml staining SREBP2 in HeLa whole cell lysate immunoprecipitated using ab112046 at 6µg/mg lysate (1 mg/IP; 20% of IP loaded/lane).

Lane 2: Control IgG

Detection: Chemiluminescence with exposure time of 30 seconds.

Please note: All products are "FOR RESEARCH USE ONLY. NOT FOR USE IN DIAGNOSTIC PROCEDURES"

Our Abpromise to you: Quality guaranteed and expert technical support

- Replacement or refund for products not performing as stated on the datasheet
- Valid for 12 months from date of delivery
- Response to your inquiry within 24 hours
- We provide support in Chinese, English, French, German, Japanese and Spanish
- Extensive multi-media technical resources to help you
- We investigate all quality concerns to ensure our products perform to the highest standards

If the product does not perform as described on this datasheet, we will offer a refund or replacement. For full details of the Abpromise, please visit <https://www.abcam.cn/abpromise> or contact our technical team.

Terms and conditions

- Guarantee only valid for products bought direct from Abcam or one of our authorized distributors