

Anti-SREBP1 antibody ab28481

★★★★★ [10 Abreviews](#) [118 References](#) [5 图像](#)

概述

产品名称	Anti-SREBP1抗体
描述	兔多克隆抗体to SREBP1
宿主	Rabbit
经测试应用	适用于: ICC/IF, WB
种属反应性	与反应: Mouse, Rat, Human
免疫原	Synthetic peptide corresponding to Mouse SREBP1 aa 32-47. Sequence: MLQLINNQDSDFPGLF Database link: Q9WTN3 (Peptide available as ab31099)  Run BLAST with  Run BLAST with
阳性对照	ICC/IF: Human HepG2 cells, mouse NIH-3T3, C2C12 cells; WB: mouse and rat liver, MCF-7 and MDA-MB-231 cell lysates
常规说明	<p>The Life Science industry has been in the grips of a reproducibility crisis for a number of years. Abcam is leading the way in addressing this with our range of recombinant monoclonal antibodies and knockout edited cell lines for gold-standard validation. Please check that this product meets your needs before purchasing.</p> <p>If you have any questions, special requirements or concerns, please send us an inquiry and/or contact our Support team ahead of purchase. Recommended alternatives for this product can be found below, along with publications, customer reviews and Q&As</p>

性能

形式	Liquid
存放说明	Shipped at 4°C. Upon delivery aliquot and store at -20°C. Avoid freeze / thaw cycles.
存储溶液	Preservative: 0.05% Sodium azide Constituents: PBS, 0.1% BSA
纯度	Immunogen affinity purified
克隆	多克隆
同种型	IgG

应用

The Abpromise guarantee **Abpromise™**承诺保证使用ab28481于以下的经测试应用

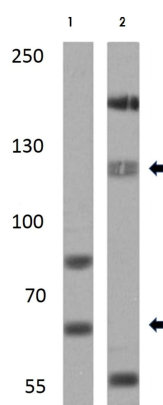
“应用说明”部分 下显示的仅为推荐的起始稀释度;实际最佳的稀释度/浓度应由使用者检定。

应用	Ab评论	说明
ICC/IF	★★★★☆ (2)	1/50 - 1/500.
WB	★★★★☆ (4)	1/500 - 1/5000. Detects an ~68 and 120 kDa protein representing SREBP1 in mouse and rat liver samples as well as rat kidney samples. A predominant band at ~68 kDa (active cleaved site) is seen and a band at ~120 kDa (inactive precursor) may not be seen or it may be diminished.

靶标

功能	Transcriptional activator required for lipid homeostasis. Regulates transcription of the LDL receptor gene as well as the fatty acid and to a lesser degree the cholesterol synthesis pathway (By similarity). Binds to the sterol regulatory element 1 (SRE-1) (5'-ATCACCCCAC-3'). Has dual sequence specificity binding to both an E-box motif (5'-ATCACGTGA-3') and to SRE-1 (5'-ATCACCCCAC-3').
组织特异性	Expressed in a wide variety of tissues, most abundant in liver and adrenal gland. In fetal tissues lung and liver shows highest expression. Isoform SREBP-1C predominates in liver, adrenal gland and ovary, whereas isoform SREBP-1A predominates in hepatoma cell lines. Isoform SREBP-1A and isoform SREBP-1C are found in kidney, brain, white fat, and muscle.
序列相似性	Belongs to the SREBP family. Contains 1 basic helix-loop-helix (bHLH) domain.
翻译后修饰	At low cholesterol the SCAP/SREBP complex is recruited into COPII vesicles for export from the ER. In the Golgi complex SREBPs are cleaved sequentially by site-1 and site-2 protease. The first cleavage by site-1 protease occurs within the luminal loop, the second cleavage by site-2 protease occurs within the first transmembrane domain and releases the transcription factor from the Golgi membrane. Apoptosis triggers cleavage by the cysteine proteases caspase-3 and caspase-7. Phosphorylated by AMPK, leading to suppress protein processing and nuclear translocation, and repress target gene expression. Phosphorylation at Ser-402 by SIK1 represses activity possibly by inhibiting DNA-binding.
细胞定位	Nucleus and Endoplasmic reticulum membrane. Golgi apparatus membrane. Cytoplasmic vesicle > COPII-coated vesicle membrane. Moves from the endoplasmic reticulum to the Golgi in the absence of sterols.

图片



Western blot - Anti-SREBP1 antibody (ab28481)

All lanes : Anti-SREBP1 antibody (ab28481) at 1/1000 dilution

Lane 1 : Mouse liver lysate

Lane 2 : Rat liver lysate

Lysates/proteins at 25 µg per lane.

Secondary

All lanes : HRP-conjugated secondary antibody

Developed using the ECL technique.



Western blot - Anti-SREBP1 antibody (ab28481)

All lanes : Anti-SREBP1 antibody (ab28481) at 1/1000 dilution

Lane 1 : MDA-MB-231 cell lysate with Fat-free milk / PBST

Lane 2 : MCF-7 cell lysate with Fat-free milk / PBST

Lysates/proteins at 20 µg per lane.

Blocking peptides at 5 % per lane.

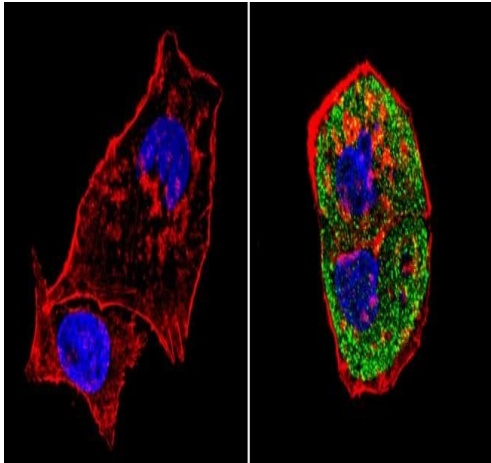
Secondary

All lanes : Goat anti-rabbit IgG-HRP at 1/5000 dilution

Developed using the ECL technique.

Observed band size: 120 kDa

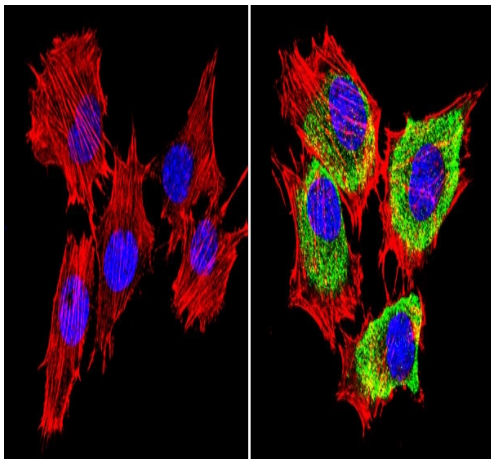
Western blot analysis on a 4-8% SDS-PAGE gel.



Immunocytochemistry/ Immunofluorescence - Anti-SREBP1 antibody (ab28481)

Immunocytochemical analysis of formalin-fixed HepG2 cells (human liver hepatocellular carcinoma cell line) using immunofluorescence to label SREBP1 with ab28481 at a concentration of 1/100 in 3% BSA-PBS and incubated overnight in a humid environment at 4°C. Prior to labelling, cells were permeabilised with 0.1% Triton X-100 in TBS for between 5 and 10 minutes, they were subsequently blocked with 3% BSA-PBS for 30 minutes at room temperature. The secondary used was a DyLight® conjugate (green) and was incubated at room temperature in the dark. The cells were counterstained with DAPI against DNA labelling the nuclear compartments blue and a red fluorescent phalloidin stain against F-Actin. Magnification was 60X

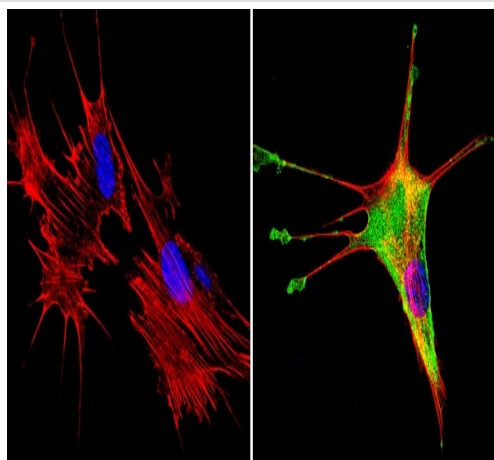
The left image is a negative control in the absence of ab28481, the right image is in the presence of ab28481, the secondary and counterstains.



Immunocytochemistry/ Immunofluorescence - Anti-SREBP1 antibody (ab28481)

Immunocytochemical analysis of formalin-fixed C2C12 cell lines using immunofluorescence to label SREBP1 with ab28481 at a concentration of 1/100 in 3% BSA-PBS and incubated overnight in a humid environment at 4°C. Prior to labelling, cells were permeabilised with 0.1% Triton X-100 in TBS for between 5 and 10 minutes, they were subsequently blocked with 3% BSA-PBS for 30 minutes at room temperature. The secondary used was a DyLight® conjugate (green) and was incubated at room temperature in the dark. The cells were counterstained with DAPI against DNA labelling the nuclear compartments blue and a red fluorescent phalloidin stain against F-Actin. Magnification was 60X

The left image is a negative control in the absence of ab28481, the right image is in the presence of ab28481, the secondary and counterstains.



Immunocytochemistry/ Immunofluorescence - Anti-SREBP1 antibody (ab28481)

Immunocytochemical analysis of formalin-fixed NIH 3T3 cell lines using immunofluorescence to label SREBP1 with ab28481 at a concentration of 1/100 in 3% BSA-PBS and incubated overnight in a humid environment at 4°C. Prior to labelling, cells were permeabilised with 0.1% Triton X-100 in TBS for between 5 and 10 minutes, they were subsequently blocked with 3% BSA-PBS for 30 minutes at room temperature. The secondary used was a DyLight® conjugate (green) and was incubated at room temperature in the dark. The cells were counterstained with DAPI against DNA labelling the nuclear compartments blue and a red fluorescent phalloidin stain against F-Actin. Magnification is 60X

The left image is a negative control in the absence of ab28481, the right image is in the presence of ab28481, the secondary and counterstains.

Please note: All products are "FOR RESEARCH USE ONLY. NOT FOR USE IN DIAGNOSTIC PROCEDURES"

Our Abpromise to you: Quality guaranteed and expert technical support

- Replacement or refund for products not performing as stated on the datasheet
- Valid for 12 months from date of delivery
- Response to your inquiry within 24 hours
- We provide support in Chinese, English, French, German, Japanese and Spanish
- Extensive multi-media technical resources to help you
- We investigate all quality concerns to ensure our products perform to the highest standards

If the product does not perform as described on this datasheet, we will offer a refund or replacement. For full details of the Abpromise, please visit <https://www.abcam.cn/abpromise> or contact our technical team.

Terms and conditions

- Guarantee only valid for products bought direct from Abcam or one of our authorized distributors