


### Anti-Src antibody [EPR5496] ab109381

敲除验证 重组 RabMAb

★★★★★ [2 Abreviews](#) [35 References](#) [6 图像](#)

#### 概述

产品名称	Anti-Src抗体[EPR5496]
描述	兔单克隆抗体[EPR5496] to Src
宿主	Rabbit
经测试应用	适用于: WB, IHC-P 不适用于: Flow Cyt or IP
种属反应性	与反应: Human 预测可用于: Mouse, Rat 
免疫原	Synthetic peptide. This information is proprietary to Abcam and/or its suppliers.
阳性对照	WB: HeLa, 293T, SH-SY5Y and HUVEC cell lysates. IHC-P: Human kidney and colonic adenocarcinoma tissues.
常规说明	This product is a recombinant monoclonal antibody, which offers several advantages including: - High batch-to-batch consistency and reproducibility - Improved sensitivity and specificity - Long-term security of supply - Animal-free production For more information <a href="#">see here</a> . Our RabMAb <sup>®</sup> technology is a patented hybridoma-based technology for making rabbit monoclonal antibodies. For details on our patents, please refer to <a href="#">RabMAb<sup>®</sup> patents</a> .

#### 性能

形式	Liquid
存放说明	Shipped at 4°C. Store at -20°C. Stable for 12 months at -20°C.
存储溶液	pH: 7.20 Preservative: 0.05% Sodium azide Constituents: 0.1% BSA, 40% Glycerol (glycerin, glycerine), 9.85% Tris glycine, 50% Tissue culture supernatant
纯度	Tissue culture supernatant
克隆	单克隆

克隆编号                      EPR5496

同种型                         IgG

## 应用

**The Abpromise guarantee**             **Abpromise™**承诺保证使用ab109381于以下的经测试应用

“应用说明”部分 下显示的仅为推荐的起始稀释度;实际最佳的稀释度/浓度应由使用者检定。

应用	Ab评论	说明
WB	★★★★★ (2)	1/10000 - 1/50000. Predicted molecular weight: 60 kDa.
IHC-P		1/250 - 1/500. Perform heat mediated antigen retrieval with citrate buffer pH 6 before commencing with IHC staining protocol.

应用说明                                    Is unsuitable for Flow Cyt or IP.

## 靶标

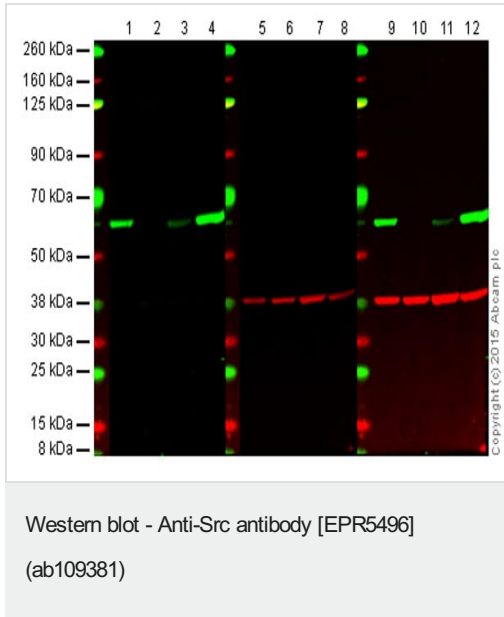
**功能**                                        Non-receptor protein tyrosine kinase that plays pivotal roles in numerous cellular processes such as proliferation, migration, and transformation. In concert with PTK2B, plays an important role in osteoclastic bone resorption. Both the formation of a SRC-PTK2B complex, and SRC kinase activity are necessary for this function. Once it is recruited to the activated integrins, by PTK2B, it phosphorylates CBL which in turn induces the activation and recruitment of phosphatidylinositol 3-kinase to the cell membrane in a signaling pathway that is critical for osteoclast function. Promotes energy production in osteoclasts by activating mitochondrial cytochrome C oxidase. Phosphorylates RUNX3 and COX2 on tyrosine residues, TNK2 on 'Tyr-284' and CBL on 'Tyr-731'. Enhances DDX58/RIG-I-elicited antiviral signaling.

**序列相似性**                                Belongs to the protein kinase superfamily. Tyr protein kinase family. SRC subfamily.  
Contains 1 protein kinase domain.  
Contains 1 SH2 domain.  
Contains 1 SH3 domain.

**翻译后修饰**                                Dephosphorylated at Tyr-530 by PTPRJ (By similarity). Phosphorylated on Tyr-530 by c-Src kinase (CSK). The phosphorylated form is termed pp60c-src. Dephosphorylated by PTPRJ at Tyr-419. Normally maintained in an inactive conformation with the SH2 domain engaged with Tyr-530, the SH3 domain engaged with the SH2-kinase linker, and Tyr-419 dephosphorylated. Dephosphorylation of Tyr-530 as a result of protein tyrosine phosphatase (PTP) action disrupts the intramolecular interaction between the SH2 domain and Tyr-530, Tyr-419 can then become autophosphorylated, resulting in SRC activation. Phosphorylation of Tyr-530 by CSK allows this interaction to reform, resulting in SRC inactivation.  
S-nitrosylation is important for activation of its kinase activity.

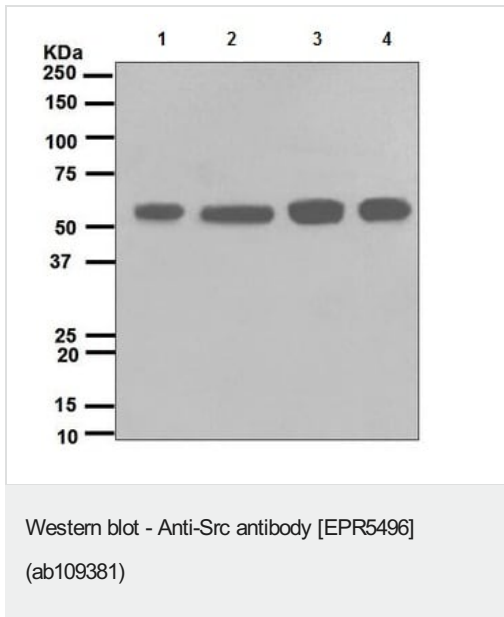
**细胞定位**                                    Cell membrane. Mitochondrion inner membrane.

**形式**   This protein is known to be similar in amino acid sequence to HCK (P08631), LCK (P06239), FYN (P06241), YES1 (P07947), and LYN (P07948). Therefore, cross-reactivity with these homologous proteins may be observed. We would be happy to provide immunogen alignment information upon request.



**Lanes 1, 5 and 9:** Wild-type HAP1 cell lysate (20 µg)  
**Lanes 2, 6 and 10:** Src knockout HAP1 cell lysate (20 µg)  
**Lanes 3, 7 and 11:** HeLa cell lysate (20 µg)  
**Lanes 4, 8 and 12:** A431 cell lysate (20 µg)  
**Lanes 1, 2, 3 and 4:** Green signal from target – ab109381 observed at 60 kDa  
**Lanes 5, 6, 7 and 8:** Red signal from loading control – **ab8245** observed at 37 kDa  
**Lanes 9, 10, 11 and 12:** Merged (red and green) signal

ab109381 was shown to specifically react with Src when Src knockout samples were used. Wild-type and Src knockout samples were subjected to SDS-PAGE. ab109381 and **ab8245** (loading control to GAPDH) were diluted 1/10 000 and 1/2000 respectively and incubated overnight at 4°C. Blots were developed with Goat anti-Rabbit IgG H&L (IRDye® 800CW) preadsorbed (**ab216773**) and Goat anti-Mouse IgG H&L (IRDye® 680RD) preadsorbed (**ab216776**) secondary antibodies at 1/10 000 dilution for 1 h at room temperature before imaging.

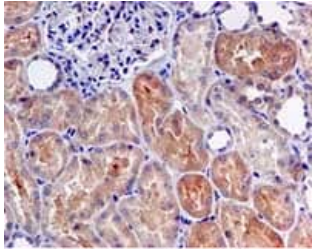


**All lanes :** Anti-Src antibody [EPR5496] (ab109381) at 1/10000 dilution

**Lane 1 :** HeLa cell lysate  
**Lane 2 :** 293T cell lysate  
**Lane 3 :** SH-SY5Y cell lysate  
**Lane 4 :** HUVEC cell lysate

Lysates/proteins at 10 µg per lane.

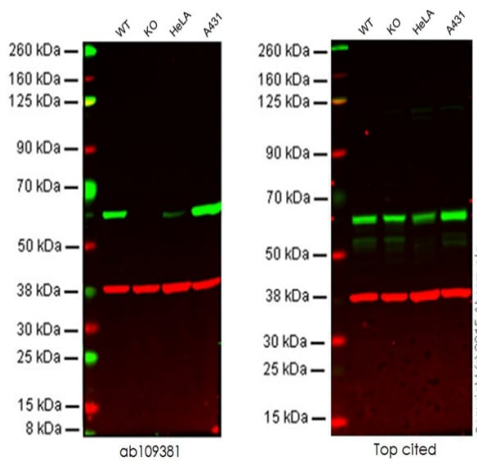
**Predicted band size:** 60 kDa



Immunohistochemistry (Formalin/PFA-fixed paraffin-embedded sections) - Anti-Src antibody [EPR5496] (ab109381)

ab109381, at 1/250 dilution, staining Src in paraffin-embedded Human kidney tissue by Immunohistochemistry.

Perform heat mediated antigen retrieval with citrate buffer pH 6 before commencing with IHC staining protocol.



Western blot - Anti-Src antibody [EPR5496] (ab109381)

**Lane 1:** Wild-type HAP1 cell lysate (20 µg)

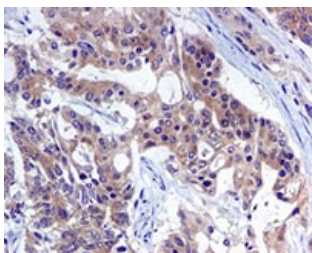
**Lane 2:** Src knockout HAP1 cell lysate (20 µg)

**Lane 3:** HeLa cell lysate (20 µg)

**Lane 4:** A431 cell lysate (20 µg)

**Lanes 1 - 4:** Merged signal (red and green). Green - ab109381 observed at 60 kDa. Red - loading control, **ab8245**, observed at 37 kDa.

This western blot image is a comparison between ab109381 and a competitor's top cited rabbit polyclonal antibody.



Immunohistochemistry (Formalin/PFA-fixed paraffin-embedded sections) - Anti-Src antibody [EPR5496] (ab109381)

ab109381, at 1/250 dilution, staining Src in paraffin-embedded Human colonic adenocarcinoma tissue by Immunohistochemistry.

Perform heat mediated antigen retrieval with citrate buffer pH 6 before commencing with IHC staining protocol.

Why choose a recombinant antibody?

**Research with confidence**  
Consistent and reproducible results

**Long-term and scalable supply**  
Recombinant technology

**Success from the first experiment**  
Confirmed specificity

**Ethical standards compliant**  
Animal-free production

Anti-Src antibody [EPR5496] (ab109381)

**Please note:** All products are "FOR RESEARCH USE ONLY. NOT FOR USE IN DIAGNOSTIC PROCEDURES"

### Our Abpromise to you: Quality guaranteed and expert technical support

---

- Replacement or refund for products not performing as stated on the datasheet
- Valid for 12 months from date of delivery
- Response to your inquiry within 24 hours
- We provide support in Chinese, English, French, German, Japanese and Spanish
- Extensive multi-media technical resources to help you
- We investigate all quality concerns to ensure our products perform to the highest standards

If the product does not perform as described on this datasheet, we will offer a refund or replacement. For full details of the Abpromise, please visit <https://www.abcam.cn/abpromise> or contact our technical team.

### Terms and conditions

---

- Guarantee only valid for products bought direct from Abcam or one of our authorized distributors