

Anti-Src antibody [Clone 327] ab16885

敲除验证

★★★★★ [4 Abreviews](#) [21 References](#) [5 图像](#)

概述

产品名称	Anti-Src抗体[Clone 327]
描述	小鼠单克隆抗体[Clone 327] to Src
宿主	Mouse
特异性	Reacts with both v-Src and c-Src proteins.
经测试应用	适用于: Flow Cyt, WB 不适用于: ICC/IF, IHC-Fr or IHC-P
种属反应性	与反应: Human
免疫原	Full length native protein (purified) corresponding to Src. Antibody generated by immunizing BALB/c mice with full length native protein (purified) and then fusing with P3X63 Ag8.653 myeloma cells.
表位	Epitope is within the SH3 domain of either v-Src or c-Src. We have no evidence for ab16885 cross-reacting with other src family kinases (e.g.fyn).
阳性对照	WB: MCF7, HeLa, A431 and NIH/3T3 cell lysates. Wild-type HAP1 cell lysate. Flow Cyt: SH-SY5Y cells.
常规说明	<p>May appear as a doublet due to phosphorylation. May be used to precipitate active Src which can then be used in a kinase reaction.</p> <p>This product was changed from ascites to tissue culture supernatant on 17 May 2019. Please note that the dilutions may need to be adjusted accordingly. If you have any questions, please do not hesitate to contact our scientific support team.</p> <p>The Life Science industry has been in the grips of a reproducibility crisis for a number of years. Abcam is leading the way in addressing this with our range of recombinant monoclonal antibodies and knockout edited cell lines for gold-standard validation. Please check that this product meets your needs before purchasing.</p> <p>If you have any questions, special requirements or concerns, please send us an inquiry and/or contact our Support team ahead of purchase. Recommended alternatives for this product can be found below, along with publications, customer reviews and Q&As</p>

性能

形式	Liquid
----	--------

存放说明	Shipped at 4°C. Store at +4°C. Do Not Freeze.
存储溶液	Preservative: 0.1% Sodium azide Constituents: 0.2% Gelatin, 0.82% Sodium phosphate
纯度	Tissue culture supernatant
纯化说明	Purified from TCS.
Primary antibody说明	May appear as a doublet due to phosphorylation. May be used to precipitate active Src which can then be used in a kinase reaction.
克隆	单克隆
克隆编号	Clone 327
骨髓瘤	P3x63-Ag8.653
同种型	IgG1

The Abpromise guarantee **Abpromise™承诺保证使用ab16885于以下的经测试应用**

应用	Ab评论	说明
Flow Cyt		Use at an assay dependent concentration. ab170190 - Mouse monoclonal IgG1, is suitable for use as an isotype control with this antibody.
WB	★★★★★ (3)	Use at an assay dependent concentration. Predicted molecular weight: 59.7 kDa. ab16885 may appear as a doublet on WB due to phosphorylation. This antibody can be used to precipitate active src kinase.

靶标

功能	<p>Non-receptor protein tyrosine kinase that plays pivotal roles in numerous cellular processes such as proliferation, migration, and transformation. In concert with PTK2B, plays an important role in osteoclastic bone resorption. Both the formation of a SRC-PTK2B complex, and SRC kinase activity are necessary for this function. Once it is recruited to the activated integrins, by PTK2B, it phosphorylates CBL which in turn induces the activation and recruitment of phosphatidylinositol 3-kinase to the cell membrane in a signaling pathway that is critical for osteoclast function.</p> <p>Promotes energy production in osteoclasts by activating mitochondrial cytochrome C oxidase.</p> <p>Phosphorylates RUNX3 and COX2 on tyrosine residues, TNK2 on 'Tyr-284' and CBL on 'Tyr-731'.</p> <p>Enhances DDX58/RIG-I-elicited antiviral signaling.</p>
序列相似性	<p>Belongs to the protein kinase superfamily. Tyr protein kinase family. SRC subfamily.</p> <p>Contains 1 protein kinase domain.</p> <p>Contains 1 SH2 domain.</p> <p>Contains 1 SH3 domain.</p>
翻译后修饰	<p>Dephosphorylated at Tyr-530 by PTPRJ (Bv similarity). Phosphorylated on Tyr-530 by c-Src</p>

kinase (CSK). The phosphorylated form is termed pp60c-src. Dephosphorylated by PTPRJ at Tyr-419. Normally maintained in an inactive conformation with the SH2 domain engaged with Tyr-530, the SH3 domain engaged with the SH2-kinase linker, and Tyr-419 dephosphorylated. Dephosphorylation of Tyr-530 as a result of protein tyrosine phosphatase (PTP) action disrupts the intramolecular interaction between the SH2 domain and Tyr-530, Tyr-419 can then become autophosphorylated, resulting in SRC activation. Phosphorylation of Tyr-530 by CSK allows this interaction to reform, resulting in SRC inactivation. S-nitrosylation is important for activation of its kinase activity.

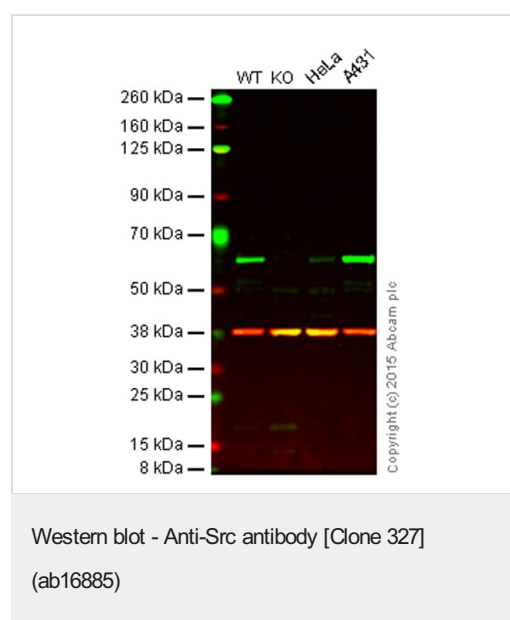
细胞定位

Cell membrane. Mitochondrion inner membrane.

形式

This protein is known to be similar in amino acid sequence to HCK (P08631), LCK (P06239), FYN (P06241), YES1 (P07947), and LYN (P07948). Therefore, cross-reactivity with these homologous proteins may be observed. We would be happy to provide immunogen alignment information upon request.

图片



Lane 1: Wild-type HAP1 cell lysate (20 µg)

Lane 2: Src knockout HAP1 cell lysate (20 µg)

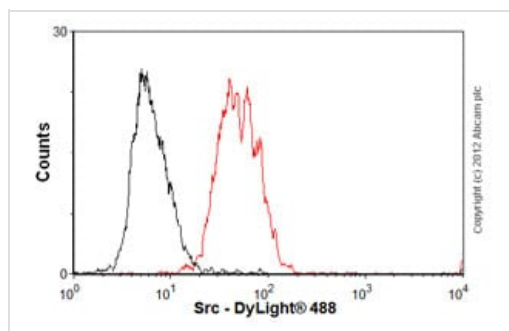
Lane 3: HeLa cell lysate (20 µg)

Lane 4: A431 cell lysate (20 µg)

Lanes 1 - 4: Merged signal (red and green). Green - ab16885 observed at 60 kDa. Red - loading control, [ab8227](#), observed at 42 kDa.

ab16885 was shown to specifically react with Src when Src knockout samples were used. Wild-type and Src knockout samples were subjected to SDS-PAGE. ab16885 and [ab8227](#) (loading control to beta Actin) were diluted 2.5µg/ml and 1/1000 respectively and incubated overnight at 4°C. Blots were developed with Goat anti-Mouse IgG H&L (IRDye® 800CW) preadsorbed ([ab216772](#)) and Goat Anti-Rabbit IgG H&L (IRDye® 680RD) preadsorbed ([ab216777](#)) secondary antibodies at 1/10000 dilution for 1 h at room temperature before imaging.

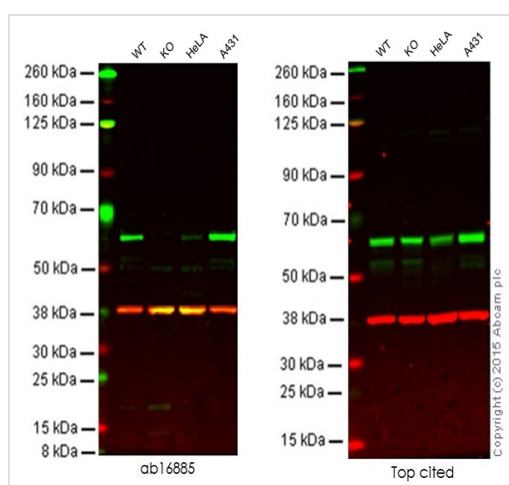
This image was generated using the ascites version of the product.



Flow Cytometry - Anti-Src antibody [Clone 327]
(ab16885)

Overlay histogram showing SH-SY5Y cells stained with ab16885 (red line). The cells were fixed with 80% methanol (5 min) and then permeabilized with 0.1% PBS-Tween for 20 min. The cells were then incubated in 1x PBS / 10% normal goat serum / 0.3M glycine to block non-specific protein-protein interactions followed by the antibody (ab16885, 1µg/1x10⁶ cells) for 30 min at 22°C. The secondary antibody used was DyLight® 488 goat anti-mouse IgG (H+L) ([ab96879](#)) at 1/500 dilution for 30 min at 22°C. Isotype control antibody (black line) was mouse IgG1 [ICIGG1] ([ab91353](#), 2µg/1x10⁶ cells) used under the same conditions. Acquisition of >5,000 events was performed.

This image was generated using the ascites version of the product.



Western blot - Anti-Src antibody [Clone 327]
(ab16885)

Lane 1: Wild-type HAP1 cell lysate (20 µg)

Lane 2: Src knockout HAP1 cell lysate (20 µg)

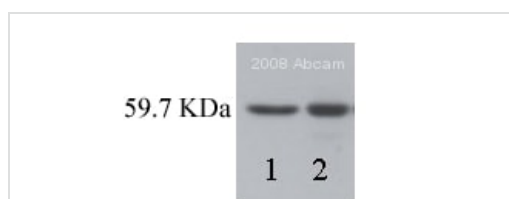
Lane 3: HeLa cell lysate (20 µg)

Lane 4: A431 cell lysate (20 µg)

Lanes 1 - 4: Merged signal (red and green). Green - ab16885 observed at 60 kDa. Red - loading control, [ab8245](#), observed at 37 kDa.

This western blot image is a comparison between ab16885 and a competitor's top cited rabbit polyclonal antibody.

This image was generated using the ascites version of the product.



Western blot - Anti-Src antibody [Clone 327]
(ab16885)

This image is courtesy of an anonymous Abreview

All lanes : Anti-Src antibody [Clone 327] (ab16885) at 2.5 µg/ml

Lane 1 : Whole cell lysate prepared from human MCF-7 cells (Untreated)

Lane 2 : Whole cell lysate prepared from human MCF-7 cells (Treated with 10uM PP2)

Secondary

All lanes : HRP conjugated Donkey polyclonal to mouse Ig at 1/5000 dilution

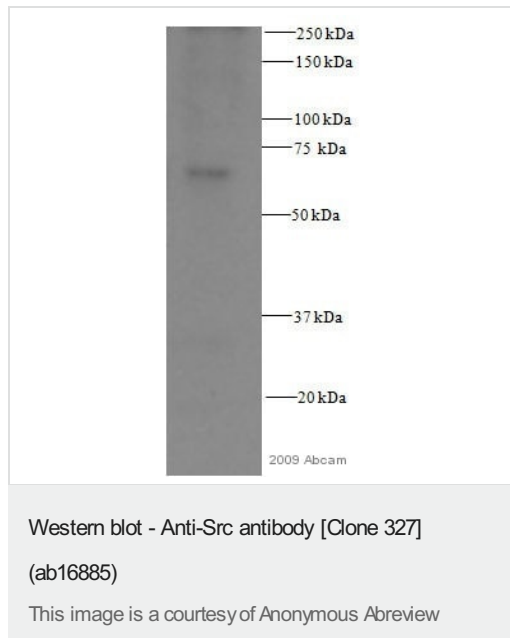
Developed using the ECL technique.

Performed under reducing conditions.

Predicted band size: 59.7 kDa

Exposure time: 3 minutes

This image was generated using the ascites version of the product.



Anti-Src antibody [Clone 327] (ab16885) at 1/100 dilution + Lysate prepared from mouse NIH 3T3 cell line at 10 µg

Secondary

HRP-conjugated sheep monoclonal to mouse IgG at 1/5000 dilution

Developed using the ECL technique.

Performed under reducing conditions.

Predicted band size: 59.7 kDa

Observed band size: 60 kDa

Exposure time: 12 minutes

This image was generated using the ascites version of the product.

Please note: All products are "FOR RESEARCH USE ONLY. NOT FOR USE IN DIAGNOSTIC PROCEDURES"

Our Abpromise to you: Quality guaranteed and expert technical support

- Replacement or refund for products not performing as stated on the datasheet
- Valid for 12 months from date of delivery
- Response to your inquiry within 24 hours
- We provide support in Chinese, English, French, German, Japanese and Spanish
- Extensive multi-media technical resources to help you
- We investigate all quality concerns to ensure our products perform to the highest standards

If the product does not perform as described on this datasheet, we will offer a refund or replacement. For full details of the Abpromise, please visit <https://www.abcam.cn/abpromise> or contact our technical team.

Terms and conditions

- Guarantee only valid for products bought direct from Abcam or one of our authorized distributors