


Anti-SR1 antibody ab71983

[5 References](#) [2 图像](#)

概述

产品名称	Anti-SR1抗体
描述	兔多克隆抗体to SR1
宿主	Rabbit
经测试应用	适用于: WB, IHC-P
种属反应性	与反应: Mouse, Rat, Human 预测可用于: Chicken 
免疫原	Synthetic peptide (Human) sequence is amino acids 50-100 in length from Sorcin. (NP_003121).
常规说明	<p>The Life Science industry has been in the grips of a reproducibility crisis for a number of years. Abcam is leading the way in addressing this with our range of recombinant monoclonal antibodies and knockout edited cell lines for gold-standard validation. Please check that this product meets your needs before purchasing.</p> <p>If you have any questions, special requirements or concerns, please send us an inquiry and/or contact our Support team ahead of purchase. Recommended alternatives for this product can be found below, along with publications, customer reviews and Q&As</p>

性能

形式	Liquid
存放说明	Shipped at 4°C. Store at +4°C short term (1-2 weeks). Upon delivery aliquot. Store at -20°C or -80°C. Avoid freeze / thaw cycle.
存储溶液	pH: 7.40 Preservative: 0.05% Sodium azide Constituent: PBS
纯度	Immunogen affinity purified
克隆	多克隆
同种型	IgG

应用

The Abpromise guarantee

Abpromise™ 承诺保证使用ab71983于以下的经测试应用

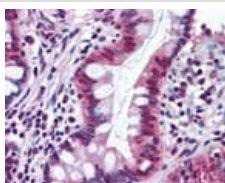
“应用说明”部分 下显示的仅为推荐的起始稀释度;实际最佳的稀释度/浓度应由使用者检定。

应用	Ab评论	说明
WB		Use a concentration of 0.5 - 2 µg/ml. Detects a band of approximately 22 kDa (predicted molecular weight: 22 kDa).
IHC-P		Use at an assay dependent concentration.

靶标

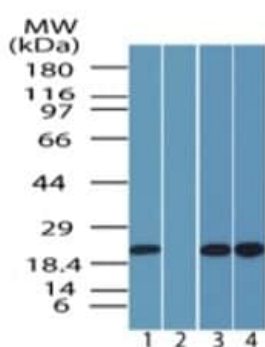
功能	Calcium-binding protein that modulates excitation-contraction coupling in the heart. Contributes to calcium homeostasis in the heart sarcoplasmic reticulum. Modulates the activity of RYR2 calcium channels.
组织特异性	Detected in cardiac myocytes.
序列相似性	Contains 4 EF-hand domains.
细胞定位	Cytoplasm. Sarcoplasmic reticulum membrane. Relocates to the sarcoplasmic reticulum membrane in response to elevated calcium levels.

图片



Immunohistochemistry (Formalin/PFA-fixed paraffin-embedded sections) - Anti-SR1 antibody (ab71983)

Paraffin embedded human small intestine tissue immunostained using ab71983 at 10 µg/ml.



Western blot - Anti-SR1 antibody (ab71983)

All lanes : Anti-SR1 antibody (ab71983) at 1 µg/ml

Lane 1 : human brain lysate

Lane 2 : human brain lysate with immunising peptide

Lane 3 : mouse brain lysate

Lane 4 : rat brain lysate

Predicted band size: 22 kDa

Observed band size: 22 kDa

Please note: All products are "FOR RESEARCH USE ONLY. NOT FOR USE IN DIAGNOSTIC PROCEDURES"

Our Abpromise to you: Quality guaranteed and expert technical support

- Replacement or refund for products not performing as stated on the datasheet
- Valid for 12 months from date of delivery
- Response to your inquiry within 24 hours

- We provide support in Chinese, English, French, German, Japanese and Spanish
- Extensive multi-media technical resources to help you
- We investigate all quality concerns to ensure our products perform to the highest standards

If the product does not perform as described on this datasheet, we will offer a refund or replacement. For full details of the Abpromise, please visit <https://www.abcam.cn/abpromise> or contact our technical team.

Terms and conditions

- Guarantee only valid for products bought direct from Abcam or one of our authorized distributors