

# Anti-SPTLC1 antibody ab232847

[1 References](#) [5 图像](#)

### 概述

产品名称	Anti-SPTLC1抗体
描述	兔多克隆抗体to SPTLC1
宿主	Rabbit
经测试应用	适用于: IHC-P, WB
种属反应性	与反应: Mouse, Recombinant fragment
免疫原	Recombinant fragment (His-T7-tag) corresponding to Mouse SPTLC1 aa 100 to the C-terminus. Two N-terminal tags (Expressed in E.coli). Database link: <a href="#">Q35704</a>
	<a href="#">Run BLAST with</a> <a href="#">Run BLAST with</a>
阳性对照	IHC-P: Mouse kidney, uterus and liver tissue. WB: Mouse liver, lung and brain tissue; Recombinant mouse SPTLC1 protein.
常规说明	<p>The Life Science industry has been in the grips of a reproducibility crisis for a number of years. Abcam is leading the way in addressing this with our range of recombinant monoclonal antibodies and knockout edited cell lines for gold-standard validation. Please check that this product meets your needs before purchasing.</p> <p>If you have any questions, special requirements or concerns, please send us an inquiry and/or contact our Support team ahead of purchase. Recommended alternatives for this product can be found below, along with publications, customer reviews and Q&amp;As</p>

### 性能

形式	Liquid
存放说明	Shipped at 4°C. Store at +4°C short term (1-2 weeks). Upon delivery aliquot. Store at -20°C long term. Avoid freeze / thaw cycle.
存储溶液	pH: 7.40 Preservative: 0.011% Proclin 300 Constituents: 55.77% Glycerol (glycerin, glycerine), 44.219% PBS
纯度	Immunogen affinity purified
纯化说明	Antigen-specific affinity chromatography followed by Protein A affinity chromatography.
克隆	多克隆
同种型	IgG

## 应用

**The Abpromise guarantee**      **Abpromise™**承诺保证使用ab232847于以下的经测试应用

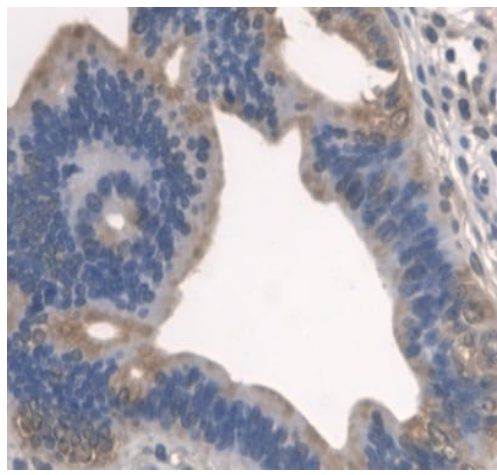
“应用说明”部分 下显示的仅为推荐的起始稀释度;实际最佳的稀释度/浓度应由使用者检定。

应用	Ab评论	说明
IHC-P		Use a concentration of 5 - 20 µg/ml.
WB		Use a concentration of 0.5 - 2 µg/ml.

## 靶标

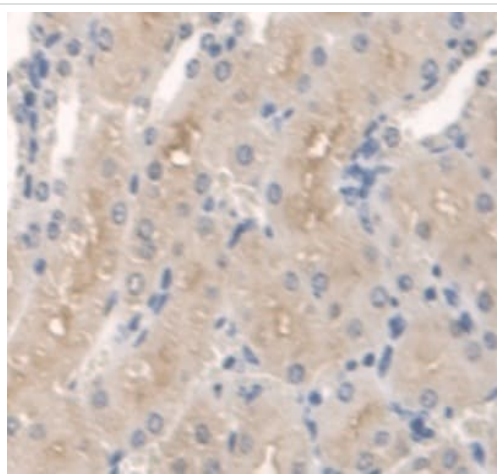
<b>功能</b>	Serine palmitoyltransferase (SPT). The heterodimer formed with LCB2 (SPTLC2 or SPTLC3) constitutes the catalytic core. The composition of the serine palmitoyltransferase (SPT) complex determines the substrate preference. The SPTLC1-SPTLC2-SSSPTA complex shows a strong preference for C16-CoA substrate, while the SPTLC1-SPTLC3-SSSPTA isozyme uses both C14-CoA and C16-CoA as substrates, with a slight preference for C14-CoA. The SPTLC1-SPTLC2-SSSPTB complex shows a strong preference for C18-CoA substrate, while the SPTLC1-SPTLC3-SSSPTB isozyme displays an ability to use a broader range of acyl-CoAs, without apparent preference.
<b>组织特异性</b>	Widely expressed. Not detected in small intestine.
<b>通路</b>	Lipid metabolism; sphingolipid metabolism.
<b>疾病相关</b>	Defects in SPTLC1 are the cause of hereditary sensory and autonomic neuropathy type 1A (HSAN1A) [MIM:162400]. The hereditary sensory and autonomic neuropathies are a genetically and clinically heterogeneous group of disorders characterized by degeneration of dorsal root and autonomic ganglion cells, and by sensory and/or autonomic abnormalities. HSAN1A is an autosomal dominant axonal neuropathy with onset in the second or third decades. Initial symptoms are loss of pain, touch, heat, and cold sensation over the feet, followed by distal muscle wasting and weakness. Loss of pain sensation leads to chronic skin ulcers and distal amputations.
<b>序列相似性</b>	Belongs to the class-II pyridoxal-phosphate-dependent aminotransferase family.
<b>细胞定位</b>	Endoplasmic reticulum membrane.

## 图片



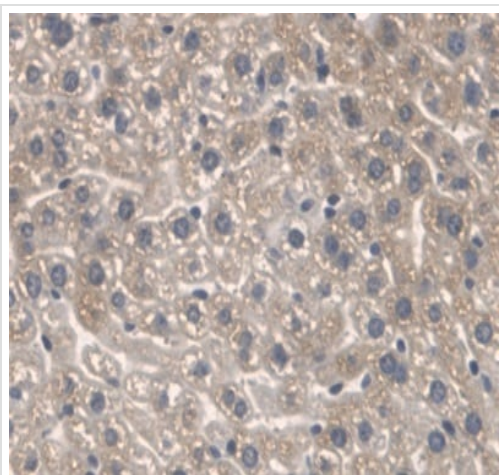
Immunohistochemistry (Formalin/PFA-fixed paraffin-embedded sections) - Anti-SPTLC1 antibody (ab232847)

Formalin-fixed, paraffin-embedded mouse uterus tissue stained for SPTLC1 using ab232847 at 20  $\mu\text{g}/\text{mL}$  in immunohistochemical analysis. DAB staining.



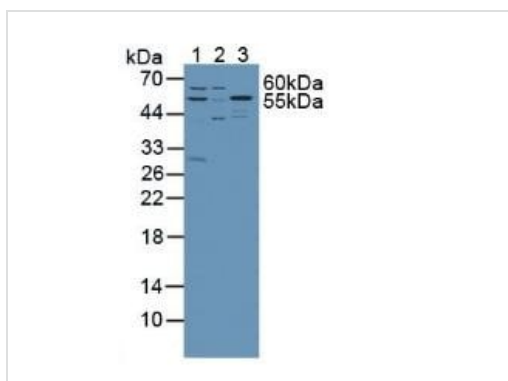
Immunohistochemistry (Formalin/PFA-fixed paraffin-embedded sections) - Anti-SPTLC1 antibody (ab232847)

Formalin-fixed, paraffin-embedded mouse kidney tissue stained for SPTLC1 using ab232847 at 20  $\mu\text{g}/\text{mL}$  in immunohistochemical analysis. DAB staining.



Immunohistochemistry (Formalin/PFA-fixed paraffin-embedded sections) - Anti-SPTLC1 antibody (ab232847)

Formalin-fixed, paraffin-embedded mouse liver tissue stained for SPTLC1 using ab232847 at 20 µg/mL in immunohistochemical analysis. DAB staining.



Western blot - Anti-SPTLC1 antibody (ab232847)

**All lanes :** Anti-SPTLC1 antibody (ab232847) at 1 µg/ml

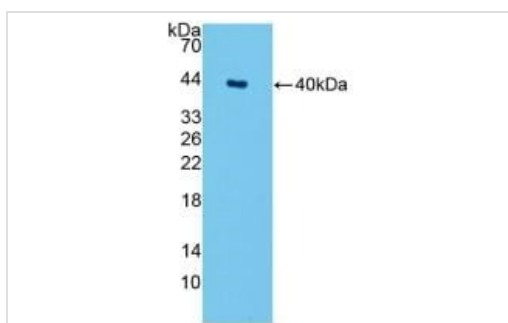
**Lane 1 :** Mouse liver lysate

**Lane 2 :** Mouse lung lysate

**Lane 3 :** Mouse brain lysate

**Secondary**

**All lanes :** HRP-Linked Guinea pig anti-rabbit at 1/2000 dilution



Western blot - Anti-SPTLC1 antibody (ab232847)

Anti-SPTLC1 antibody (ab232847) at 1 µg/ml + Recombinant mouse SPTLC1 protein

**Secondary**

HRP-Linked Guinea pig anti-rabbit at 1/2000 dilution

**Please note:** All products are "FOR RESEARCH USE ONLY. NOT FOR USE IN DIAGNOSTIC PROCEDURES"

## **Our Abpromise to you: Quality guaranteed and expert technical support**

---

- Replacement or refund for products not performing as stated on the datasheet
- Valid for 12 months from date of delivery
- Response to your inquiry within 24 hours
  
- We provide support in Chinese, English, French, German, Japanese and Spanish
- Extensive multi-media technical resources to help you
- We investigate all quality concerns to ensure our products perform to the highest standards

If the product does not perform as described on this datasheet, we will offer a refund or replacement. For full details of the Abpromise, please visit <https://www.abcam.cn/abpromise> or contact our technical team.

## **Terms and conditions**

---

- Guarantee only valid for products bought direct from Abcam or one of our authorized distributors