


Anti-SPTBN1 antibody [EPR5869] ab124888

重组 RabMAb

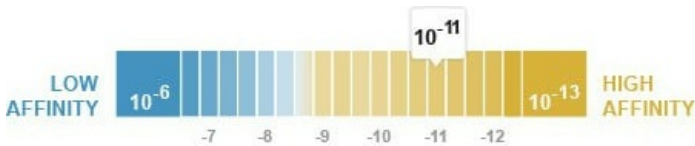
2 References 4 图像

概述

产品名称	Anti-SPTBN1抗体[EPR5869]
描述	兔单克隆抗体[EPR5869] to SPTBN1
宿主	Rabbit
经测试应用	适用于: WB, IHC-P 不适用于: Flow Cyt or IP
种属反应性	与反应: Human 预测可用于: Mouse, Rat 
免疫原	Synthetic peptide within Human SPTBN1 aa 1900-2000. The exact sequence is proprietary.
阳性对照	Human kidney tissue; SH-SY5Y, HeLa, Caco 2 and Jurkat whole cell lysate (ab7899).
常规说明	<p>This product is a recombinant monoclonal antibody, which offers several advantages including:</p> <ul style="list-style-type: none">- High batch-to-batch consistency and reproducibility- Improved sensitivity and specificity- Long-term security of supply- Animal-free production <p>For more information see here.</p> <p>Our RabMAb[®] technology is a patented hybridoma-based technology for making rabbit monoclonal antibodies. For details on our patents, please refer to RabMAb[®] patents.</p>

性能

形式	Liquid
存放说明	Shipped at 4°C. Store at -20°C. Stable for 12 months at -20°C.
解离常数 (K _D)	K _D = 4.40 x 10 ⁻¹¹ M



[Learn more about K_D](#)

存储溶液	pH: 7.2
------	---------

纯度 Protein A purified

克隆 单克隆

克隆编号 EPR5869

同种型 IgG

The Abpromise guarantee

“应用说明”部分 下显示的仅为推荐的起始稀释度;实际最佳的稀释度/浓度应由使用者检定。

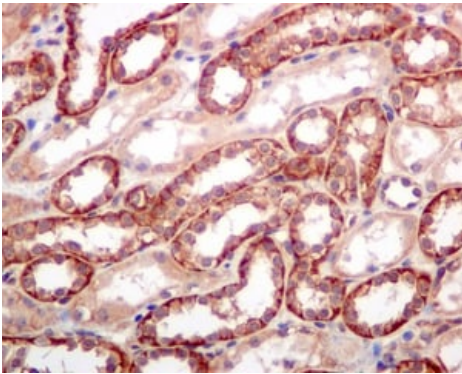
应用说明 Is unsuitable for Flow Cyt or IP.

功能 Fodrin, which seems to be involved in secretion, interacts with calmodulin in a calcium-dependent manner and is thus candidate for the calcium-dependent movement of the cytoskeleton at the membrane.

序列相似性	<p>Belongs to the spectrin family.</p> <p>Contains 2 CH (calponin-homology) domains.</p> <p>Contains 1 PH domain.</p> <p>Contains 17 spectrin repeats.</p>
--------------	--

细胞定位 Cell membrane and Cytoplasm > cytoskeleton. Cytoplasm > myofibril > sarcomere > M line.
Colocalizes with ANK2 in a distinct intracellular compartment of neonatal cardiomyocytes.

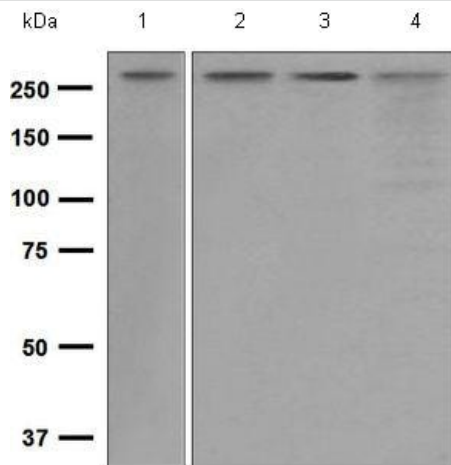
2



Immunohistochemistry (Formalin/PFA-fixed paraffin-embedded sections) - Anti-SPTBN1 antibody [EPR5869] (ab124888)

ab124888, at 1/250 dilution, staining SPTBN1 in paraffin-embedded Human kidney tissue by Immunohistochemistry.

Perform heat mediated antigen retrieval before commencing with IHC staining protocol.



Western blot - Anti-SPTBN1 antibody [EPR5869] (ab124888)

All lanes : Anti-SPTBN1 antibody [EPR5869] (ab124888) at 1/1000 dilution

Lane 1 : SH-SY5Y cell lysate

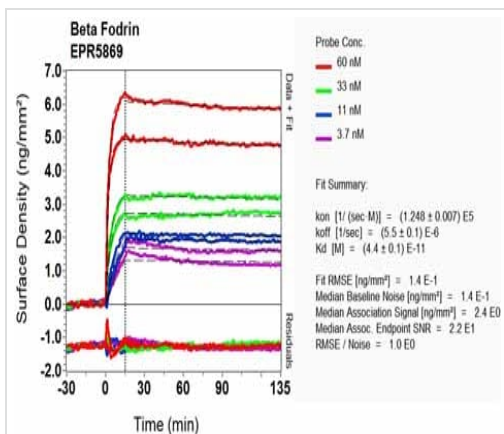
Lane 2 : HeLa cell lysate

Lane 3 : Caco 2 cell lysate

Lane 4 : Jurkat cell lysate

Lysates/proteins at 10 µg per lane.

Predicted band size: 275 kDa



SPR Scanning - Anti-SPTBN1 antibody [EPR5869]
(ab124888)

Equilibrium dissociation constant (K_D)

Learn more about K_D

[Click here to learn more about \$K_D\$](#)

Why choose a
recombinant antibody?



**Research with
confidence**
Consistent and
reproducible results



**Long-term and
scalable supply**
Recombinant
technology



**Success from the
first experiment**
Confirmed
specificity



**Ethical standards
compliant**
Animal-free
production

Anti-SPTBN1 antibody [EPR5869] (ab124888)

Please note: All products are "FOR RESEARCH USE ONLY. NOT FOR USE IN DIAGNOSTIC PROCEDURES"

Our Abpromise to you: Quality guaranteed and expert technical support

- Replacement or refund for products not performing as stated on the datasheet
- Valid for 12 months from date of delivery
- Response to your inquiry within 24 hours
- We provide support in Chinese, English, French, German, Japanese and Spanish
- Extensive multi-media technical resources to help you
- We investigate all quality concerns to ensure our products perform to the highest standards

If the product does not perform as described on this datasheet, we will offer a refund or replacement. For full details of the Abpromise, please visit <https://www.abcam.cn/abpromise> or contact our technical team.

Terms and conditions

- Guarantee only valid for products bought direct from Abcam or one of our authorized distributors