


Anti-Spt6 antibody ab32820

★★★★★ [1 Abreviews](#) [11 References](#) [2 图像](#)

概述	
产品名称	Anti-Spt6抗体
描述	兔多克隆抗体to Spt6
宿主	Rabbit
特异性	From Jan 2024, QC testing of replenishment batches of this polyclonal changed. All tested and expected application and reactive species combinations are still covered by our Abcam product promise. However, we no longer test all applications. For more information on a specific batch, please contact our Scientific Support who will be happy to help.
经测试应用	适用于: IP, WB
种属反应性	与反应: Human 预测可用于: Mouse, Zebrafish 
免疫原	Synthetic peptide corresponding to Human Spt6 aa 1150-1250 conjugated to keyhole limpet haemocyanin. (Peptide available as ab32818 , ab32819)
阳性对照	This antibody gave a positive signal for the following cell lysates: HeLa Nuclear; HeLa; Jurkat.
常规说明	<p>The Life Science industry has been in the grips of a reproducibility crisis for a number of years. Abcam is leading the way in addressing this with our range of recombinant monoclonal antibodies and knockout edited cell lines for gold-standard validation. Please check that this product meets your needs before purchasing.</p> <p>If you have any questions, special requirements or concerns, please send us an inquiry and/or contact our Support team ahead of purchase. Recommended alternatives for this product can be found below, along with publications, customer reviews and Q&As</p>
性能	
形式	Liquid
存放说明	Shipped at 4°C. Store at +4°C short term (1-2 weeks). Upon delivery aliquot. Store at -20°C or -80°C. Avoid freeze / thaw cycle.
存储溶液	pH: 7.40 Preservative: 0.02% Sodium azide Constituent: PBS

Batches of this product that have a concentration < 1mg/ml may have BSA added as a stabilising agent. If you would like information about the formulation of a specific lot, please contact our scientific support team who will be happy to help.

纯度	Immunogen affinity purified
克隆	多克隆
同种型	IgG

应用

The Abpromise guarantee Abpromise™ 承诺保证使用ab32820于以下的经测试应用

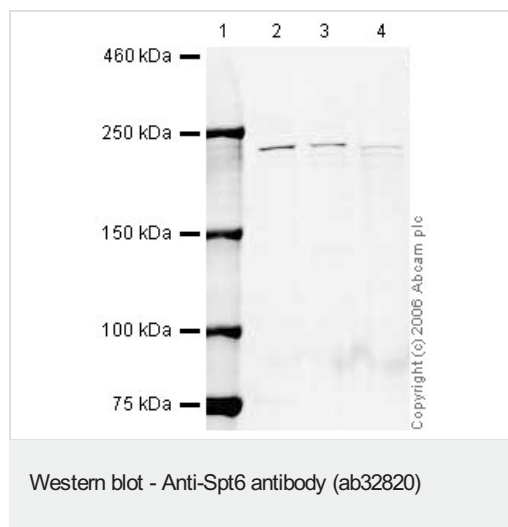
“应用说明”部分 下显示的仅为推荐的起始稀释度;实际最佳的稀释度/浓度应由使用者检定。

应用	Ab评论	说明
IP		Use at an assay dependent concentration.
WB	★★★★★ (1)	1/500. Detects a band of approximately 230 kDa (predicted molecular weight: 199 kDa).

靶标

功能	Acts to stimulate transcriptional elongation by RNA polymerase II.
组织特异性	Ubiquitously expressed.
序列相似性	Belongs to the SPT6 family. Contains 1 S1 motif domain. Contains 1 SH2 domain.
细胞定位	Nucleus.

图片



Lane 1 : Marker

Lanes 2-4 : Anti-Spt6 antibody (ab32820) at 1/500 dilution

Lane 5 : High Mark marker

Lane 2 : HeLa (Human epithelial carcinoma cell line) Whole Cell
Lysate at 10 µg

Lane 3 : Jurkat whole cell lysate ([ab7899](#)) at 20 µg

Lane 4 : HeLa (Human epithelial carcinoma cell line) Nuclear
Lysate at 20 µg

Secondary

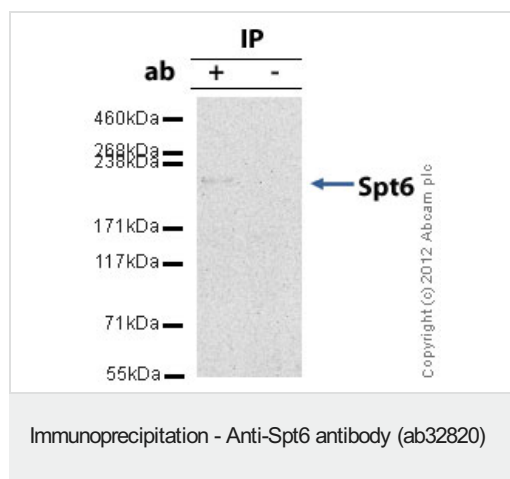
Lanes 2-4 : IR Dye 680 Conjugated Goat anti Rabbit IgG (H+L) at
1/21250 dilution

Performed under reducing conditions.

Predicted band size: 199 kDa

Observed band size: 230 kDa

Ab32820 detects a band at approximately 230kDa. Other antibodies to this target detect a band in this region and it is understood that this band corresponds to the native Spt6 protein.



Spt6 was immunoprecipitated using 0.5mg HeLa whole cell extract, 5µg of Rabbit polyclonal to Spt6 and 50µl of protein G magnetic beads (+). No antibody was added to the control (-).

The antibody was incubated under agitation with Protein G beads for 10min, HeLa whole cell extract lysate diluted in RIPA buffer was added to each sample and incubated for a further 10min under agitation.

Proteins were eluted by addition of 40µl SDS loading buffer and incubated for 10min at 70°C; 10µl of each sample was separated on a SDS PAGE gel, transferred to a nitrocellulose membrane, blocked with 5% BSA and probed with ab32820.

Secondary: Mouse monoclonal [SB62a] Secondary Antibody to Rabbit IgG light chain (HRP) ([ab99697](#)).

Band: 230kDa: Spt6

Please note: All products are "FOR RESEARCH USE ONLY. NOT FOR USE IN DIAGNOSTIC PROCEDURES"

Our Abpromise to you: Quality guaranteed and expert technical support

- Replacement or refund for products not performing as stated on the datasheet
- Valid for 12 months from date of delivery
- Response to your inquiry within 24 hours
- We provide support in Chinese, English, French, German, Japanese and Spanish
- Extensive multi-media technical resources to help you
- We investigate all quality concerns to ensure our products perform to the highest standards

If the product does not perform as described on this datasheet, we will offer a refund or replacement. For full details of the Abpromise, please visit <https://www.abcam.cn/abpromise> or contact our technical team.

Terms and conditions

- Guarantee only valid for products bought direct from Abcam or one of our authorized distributors