

### Anti-Sprouty 4/Spry-4 antibody ab7513

★★★★★ [1 Abreviews](#) [3 References](#) [4 图像](#)

#### 概述

##### 产品名称

Anti-Sprouty 4/Spry-4抗体

##### 描述

兔多克隆抗体to Sprouty 4/Spry-4

① 该产品是 **快线抗体**，通过亲和纯化得到。对抗原肽有高灵敏度及特异性(ELISA测试)。


[Read the terms of use »](#)

##### 宿主

Rabbit

##### 种属反应性

与反应: Mouse, Human

预测可用于: Cow, Chimpanzee 

##### 免疫原

Synthetic peptide corresponding to Human Sprouty 4/Spry-4 aa 283-299 conjugated to keyhole limpet haemocyanin.

Sequence:

CKAASGDAKTSRPDKPF

 [Run BLAST with](#)

 [Run BLAST with](#)

##### 常规说明

The Life Science industry has been in the grips of a reproducibility crisis for a number of years. Abcam is leading the way in addressing this with our range of recombinant monoclonal antibodies and knockout edited cell lines for gold-standard validation. Please check that this product meets your needs before purchasing.

If you have any questions, special requirements or concerns, please send us an inquiry and/or contact our Support team ahead of purchase. Recommended alternatives for this product can be found below, along with publications, customer reviews and Q&As

#### 性能

##### 形式

Liquid

##### 存放说明

Shipped at 4°C. Upon delivery aliquot and store at -20°C. Avoid freeze / thaw cycles.

##### 存储溶液

Preservative: 0.01% Sodium azide

Constituents: 0.42% Potassium phosphate, 0.87% Sodium chloride

##### 纯度

Immunogen affinity purified

##### 克隆

多克隆

##### 同种型

IgG

## 应用

Fast track antibodies constitute a diverse group of products that have been released to accelerate your research, but are not yet fully characterized. They have all been affinity purified and show high titre values against the immunizing peptide (by ELISA).

### Fast track terms of use

| 应用    | Ab评论      | 说明 |
|-------|-----------|----|
| IHC-P |           |    |
| WB    | ★★★★☆ (1) |    |

### 应用说明

Tested in peptide ELISA.

Not tested in other applications.

Optimal dilutions/concentrations should be determined by the end user.

This antibody has been tested by Western blot against cell lysates. We believe that Sprouty 4 is represented by the doublet at ~ 35kDa. We believe that this protein may require IP before Western blotting, corresponding to results seen in Sasaki et al. We have not yet succeeded in peptide blocking the bands detected with this antibody.

## 靶标

### 功能

Suppresses the insulin receptor and EGFR-transduced MAPK signaling pathway, but does not inhibit MAPK activation by a constitutively active mutant Ras. Probably impairs the formation of GTP-Ras.

### 序列相似性

Belongs to the sprouty family.  
Contains 1 SPR (sprouty) domain.

### 结构域

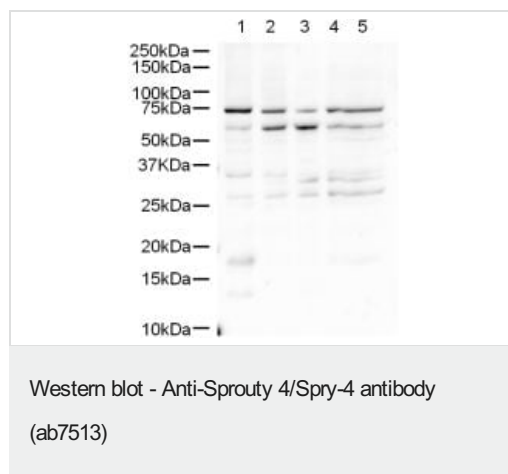
The Cys-rich domain is responsible for the localization of the protein to the membrane ruffles.

### 细胞定位

Cytoplasm. Cell projection > ruffle membrane.

## 图片

This Fast-Track antibody is not yet fully characterised. These images represent **inconclusive preliminary data**.



Western blot using ab7513 at 1/500.

Lane 1: HeLa nuclear

Lane 2: HeLa

Lane 3: A431

Lane 4: Jurkat

Lane 5: 293

Secondary ab: Goat anti-rabbit IgG **ab6721** (1/5000)

Exposure time: 2minutes.

Lysates at 5µg per lane.

We believe that CTCF is one of the bands seen in the pair of bands between 25 and 37kD.

Western blot using ab7513 at 1/500.

Lane 1: HeLa nuclear

Lane 2: HeLa

Lane 3: A431

Lane 4: Jurkat

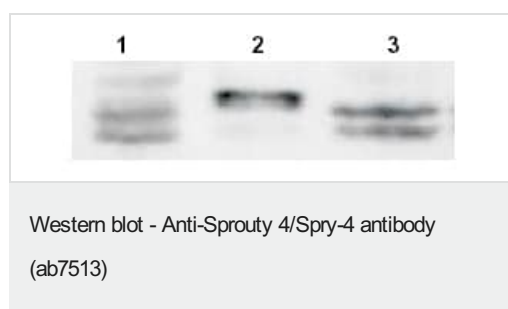
Lane 5: 293

Secondary ab: Goat anti-rabbit IgG **ab6721** (1/5000)

Exposure time: 2minutes.

Lysates at 5µg per lane.

We believe that CTCF is one of the bands seen in the pair of bands between 25 and 37kD.



**All lanes** : Anti-Sprouty 4/Spry-4 antibody (ab7513) at 1/100 dilution

**Lane 1** : HeLa whole cell lysate

**Lane 2** : SW13 whole cell lysate

**Lane 3** : C2C12 whole cell lysate

Lysates/proteins at 30 µg per lane.

**Secondary**

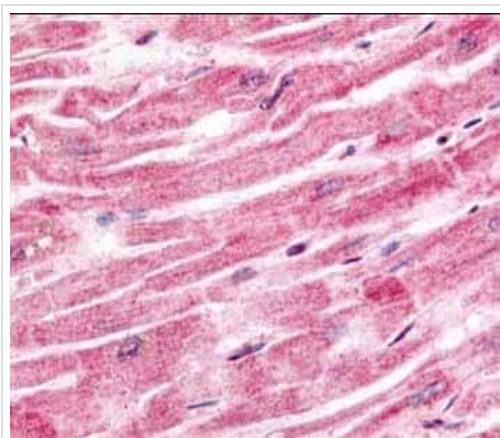
**All lanes** : HRP-conjugated Goat anti-Rabbit IgG at 1/5000 dilution

Developed using the ECL technique.

Performed under reducing conditions.

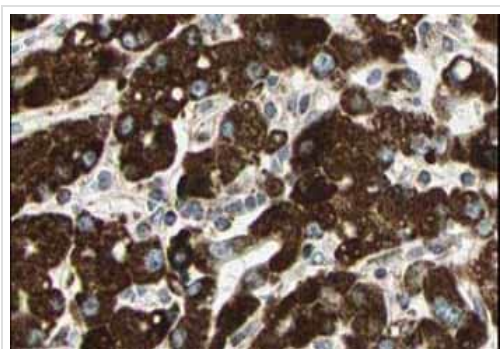
**Predicted band size:** 33 kDa

The blot was incubated with **ab7516** (1/100) overnight at 4°C.



ab7513 at 2.5 µg/ml staining human heart tissue.

Immunohistochemistry (Formalin/PFA-fixed paraffin-embedded sections) - Anti-Sprouty 4/Spdy-4 antibody (ab7513)



ab7513 staining tumour cells in human liver tissue. Brown color indicates presence of protein, blue color shows cell nuclei.

Immunohistochemistry (Formalin/PFA-fixed paraffin-embedded sections) - Anti-Sprouty 4/Spdy-4 antibody (ab7513)

**Please note:** All products are "FOR RESEARCH USE ONLY. NOT FOR USE IN DIAGNOSTIC PROCEDURES"

## Terms and conditions

- Guarantee only valid for products bought direct from Abcam or one of our authorized distributors