

# Anti-Sprouty 4/Spry-4 antibody ab115557

★★★★☆ [1 Abreviews](#) [1 References](#) [1 图像](#)

### 概述

产品名称	Anti-Sprouty 4/Spry-4抗体
描述	兔多克隆抗体to Sprouty 4/Spry-4
宿主	Rabbit
经测试应用	适用于: IHC-P
种属反应性	与反应: Human
免疫原	Synthetic peptide corresponding to Human Sprouty 4/Spry-4 aa 300-400 (C terminal) conjugated to keyhole limpet haemocyanin. Database link: <a href="#">NP_112226.2</a> <a href="#">Run BLAST with</a> <a href="#">Run BLAST with</a>
阳性对照	Human Heart tissue.
常规说明	<p>The Life Science industry has been in the grips of a reproducibility crisis for a number of years. Abcam is leading the way in addressing this with our range of recombinant monoclonal antibodies and knockout edited cell lines for gold-standard validation. Please check that this product meets your needs before purchasing.</p> <p>If you have any questions, special requirements or concerns, please send us an inquiry and/or contact our Support team ahead of purchase. Recommended alternatives for this product can be found below, along with publications, customer reviews and Q&amp;As</p>

### 性能

形式	Liquid
存放说明	Shipped at 4°C. Upon delivery aliquot and store at -20°C. Avoid repeated freeze / thaw cycles.
存储溶液	pH: 7.20 Preservative: 0.01% Sodium azide Constituents: 0.424% Potassium phosphate, 0.88% Sodium chloride
纯度	Protein A purified
克隆	多克隆
同种型	IgG

### 应用

## The Abpromise guarantee

**Abpromise™** 承诺保证使用 ab115557 于以下的经测试应用

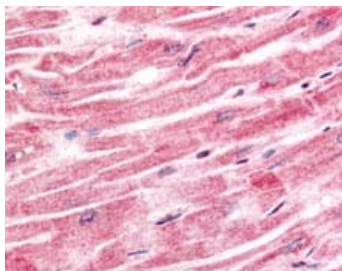
“应用说明”部分下显示的仅为推荐的起始稀释度；实际最佳的稀释度/浓度应由使用者检定。

应用	Ab评论	说明
IHC-P	★★★★★ (1)	Use a concentration of 2.5 µg/ml. Perform heat mediated antigen retrieval with citrate buffer pH 6 before commencing with IHC staining protocol.

## 靶标

<b>功能</b>	Suppresses the insulin receptor and EGFR-transduced MAPK signaling pathway, but does not inhibit MAPK activation by a constitutively active mutant Ras. Probably impairs the formation of GTP-Ras.
<b>序列相似性</b>	Belongs to the sprouty family. Contains 1 SPR (sprouty) domain.
<b>结构域</b>	The Cys-rich domain is responsible for the localization of the protein to the membrane ruffles.
<b>细胞定位</b>	Cytoplasm. Cell projection > ruffle membrane.

## 图片



ab115557, at 2.5µg/ml, staining Sprouty 4/Spry-4 in Formalin-fixed, Paraffin-embedded Human heart tissue by Immunohistochemistry followed by biotinylated secondary antibody, alkaline phosphatase-streptavidin and chromogen.

Immunohistochemistry (Formalin/PFA-fixed paraffin-embedded sections) - Anti-Sprouty 4/Spry-4 antibody (ab115557)

**Please note:** All products are "FOR RESEARCH USE ONLY. NOT FOR USE IN DIAGNOSTIC PROCEDURES"

## Our Abpromise to you: Quality guaranteed and expert technical support

- Replacement or refund for products not performing as stated on the datasheet
- Valid for 12 months from date of delivery
- Response to your inquiry within 24 hours
- We provide support in Chinese, English, French, German, Japanese and Spanish
- Extensive multi-media technical resources to help you
- We investigate all quality concerns to ensure our products perform to the highest standards

If the product does not perform as described on this datasheet, we will offer a refund or replacement. For full details of the Abpromise, please visit <https://www.abcam.cn/abpromise> or contact our technical team.

## **Terms and conditions**

---

- Guarantee only valid for products bought direct from Abcam or one of our authorized distributors