


Anti-sPLA2-X antibody [EPR11202] ab166634

重组 RabMAb

3 References **5 图像**

概述

产品名称	Anti-sPLA2-X抗体[EPR11202]
描述	兔单克隆抗体[EPR11202] to sPLA2-X
宿主	Rabbit
经测试应用	适用于: Flow Cyt (Intra), WB, IHC-P 不适用于: ICC/IF or IP
种属反应性	与反应: Human 预测可用于: Mouse, Rat 
免疫原	Recombinant fragment corresponding to Human sPLA2-X. Database link: O15496
阳性对照	TT, A549, MCF7 and Caco 2 cell lysates; Human pancreas and tonsil tissues; permeabilized A549 cells.
常规说明	This product is a recombinant monoclonal antibody, which offers several advantages including: <ul style="list-style-type: none">- High batch-to-batch consistency and reproducibility- Improved sensitivity and specificity- Long-term security of supply- Animal-free production For more information see here . Our RabMAb [®] technology is a patented hybridoma-based technology for making rabbit monoclonal antibodies. For details on our patents, please refer to RabMAb[®] patents .

性能

形式	Liquid
存放说明	Shipped at 4°C. Upon delivery aliquot and store at -20°C. Avoid freeze / thaw cycles.
存储溶液	pH: 7.2 Preservative: 0.01% Sodium azide Constituents: 9% PBS, 40% Glycerol (glycerin, glycerine), 0.05% BSA, 50% Tissue culture supernatant
纯度	Protein A purified
克隆	单克隆

克隆编号 EPR11202

同种型 IgG

应用

The Abpromise guarantee **Abpromise™**承诺保证使用ab166634于以下的经测试应用

“应用说明”部分 下显示的仅为推荐的起始稀释度;实际最佳的稀释度/浓度应由使用者检定。

应用	Ab评论	说明
Flow Cyt (Intra)		1/100 - 1/500. ab172730 - Rabbit monoclonal IgG, is suitable for use as an isotype control with this antibody.
WB		1/1000 - 1/10000. Predicted molecular weight: 17 kDa.
IHC-P		1/100 - 1/250. Perform heat mediated antigen retrieval with citrate buffer pH 6 before commencing with IHC staining protocol.

应用说明 Is unsuitable for ICC/IF or IP.

靶标

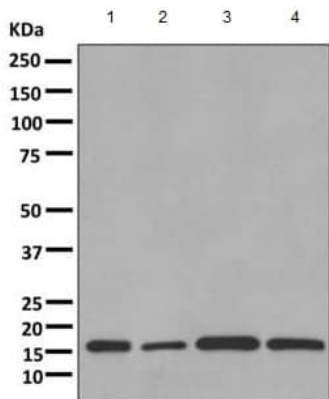
功能 PA2 catalyzes the calcium-dependent hydrolysis of the 2-acyl groups in 3-sn-phosphoglycerides. Has a powerful potency for releasing arachidonic acid from cell membrane phospholipids. Prefers phosphatidylethanolamine and phosphatidylcholine liposomes to those of phosphatidylserine.

组织特异性 Found in spleen, thymus, peripheral blood leukocytes, pancreas, lung, and colon.

序列相似性 Belongs to the phospholipase A2 family.

细胞定位 Secreted.

图片



Western blot - Anti-sPLA2-X antibody [EPR11202] (ab166634)

All lanes : Anti-sPLA2-X antibody [EPR11202] (ab166634) at 1/1000 dilution

Lane 1 : TT cell lysate

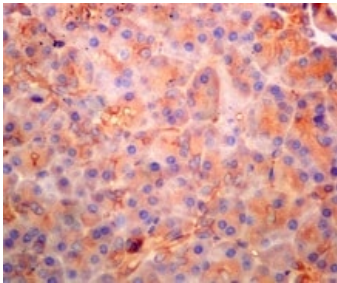
Lane 2 : A549 cell lysate

Lane 3 : MCF7 cell lysate

Lane 4 : Caco-2 cell lysate

Lysates/proteins at 10 µg per lane.

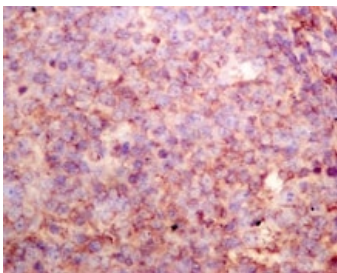
Predicted band size: 17 kDa



Immunohistochemistry (Formalin/PFA-fixed paraffin-embedded sections) - Anti-sPLA2-X antibody [EPR11202] (ab166634)

Immunohistochemical analysis of paraffin embedded Human pancreas tissue labeling sPLA2-X with ab166634 at a 1/100 dilution.

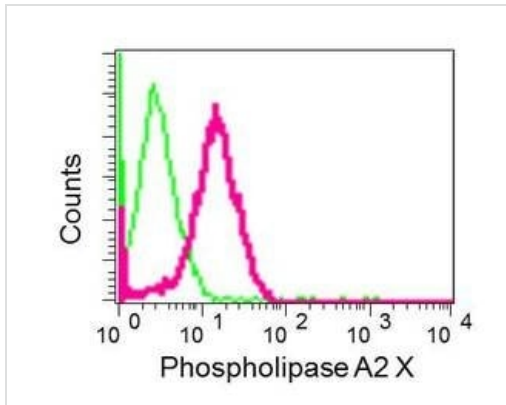
Perform heat mediated antigen retrieval with citrate buffer pH 6 before commencing with IHC staining protocol.



Immunohistochemistry (Formalin/PFA-fixed paraffin-embedded sections) - Anti-sPLA2-X antibody [EPR11202] (ab166634)

Immunohistochemical analysis of paraffin embedded Human tonsil tissue labeling sPLA2-X with ab166634 at a 1/100 dilution.





Perform heat mediated antigen retrieval with citrate buffer pH 6 before commencing with IHC staining protocol.



Intracellular flow cytometric analysis of permeabilized A549 cells using ab166634 at a 1/100 dilution (red) or a rabbit IgG (negative) (green).

Flow Cytometry (Intracellular) - Anti-sPLA2-X antibody [EPR11202] (ab166634)

Why choose a recombinant antibody?

 Research with confidence Consistent and reproducible results	 Long-term and scalable supply Recombinant technology
 Success from the first experiment Confirmed specificity	 Ethical standards compliant Animal-free production

Anti-sPLA2-X antibody [EPR11202] (ab166634)

Please note: All products are "FOR RESEARCH USE ONLY. NOT FOR USE IN DIAGNOSTIC PROCEDURES"

Our Abpromise to you: Quality guaranteed and expert technical support

- Replacement or refund for products not performing as stated on the datasheet
- Valid for 12 months from date of delivery
- Response to your inquiry within 24 hours
- We provide support in Chinese, English, French, German, Japanese and Spanish
- Extensive multi-media technical resources to help you
- We investigate all quality concerns to ensure our products perform to the highest standards

If the product does not perform as described on this datasheet, we will offer a refund or replacement. For full details of the Abpromise, please visit <https://www.abcam.cn/abpromise> or contact our technical team.

Terms and conditions

- Guarantee only valid for products bought direct from Abcam or one of our authorized distributors