


# Anti-SPF45 antibody ab114968

**1 References**   **3 图像**

### 概述

产品名称	Anti-SPF45抗体
描述	兔多克隆抗体to SPF45
宿主	Rabbit
经测试应用	适用于: IP, IHC-P
种属反应性	与反应: Mouse, Human 预测可用于: Rat, Guinea pig, Cow, Dog, Pig, Xenopus laevis, Chimpanzee, Rhesus monkey, Orangutan 
免疫原	Synthetic peptide corresponding to Human SPF45 aa 25-75. Database link: <a href="#">NP_116294.1</a>
阳性对照	WB: HeLa whole cell lysate. IHC-P: Human ovarian carcinoma tissue, mouse plasmacytoma.
常规说明	<p>The Life Science industry has been in the grips of a reproducibility crisis for a number of years. Abcam is leading the way in addressing this with our range of recombinant monoclonal antibodies and knockout edited cell lines for gold-standard validation. Please check that this product meets your needs before purchasing.</p> <p>If you have any questions, special requirements or concerns, please send us an inquiry and/or contact our Support team ahead of purchase. Recommended alternatives for this product can be found below, along with publications, customer reviews and Q&amp;As</p>

### 性能

形式	Liquid
存放说明	Shipped at 4°C. Upon delivery aliquot and store at -20°C. Avoid freeze / thaw cycles.
存储溶液	pH: 7 Preservative: 0.09% Sodium azide Constituent: 99% Tris citrate/phosphate
纯度	pH 7 to 8. Immunogen affinity purified
克隆	多克隆
同种型	IgG

应用

**The Abpromise guarantee**      **Abpromise™**承诺保证使用ab114968于以下的经测试应用

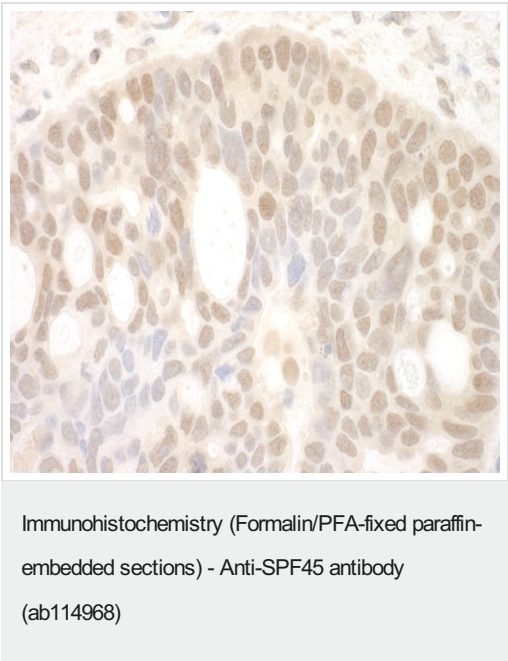
“应用说明”部分 下显示的仅为推荐的起始稀释度;实际最佳的稀释度/浓度应由使用者检定。

应用	Ab评论	说明
IP		Use at 2-5 µg/mg of lysate.
IHC-P		1/500 - 1/2000. Perform heat mediated antigen retrieval with citrate buffer pH 6 before commencing with IHC staining protocol.

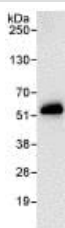
靶标

功能	Splice factor that binds to the single stranded 3'AG at the exon/intron border and promotes its utilization in the second catalytic step. Involved in the regulation of alternative splicing and the utilization of cryptic splice sites. Promotes the utilization of a cryptic splice site created by the beta-110 mutation in the HBB gene. The resulting frameshift leads to sickle cell anemia.
序列相似性	Contains 1 G-patch domain. Contains 1 RRM (RNA recognition motif) domain.
细胞定位	Nucleus.

图片



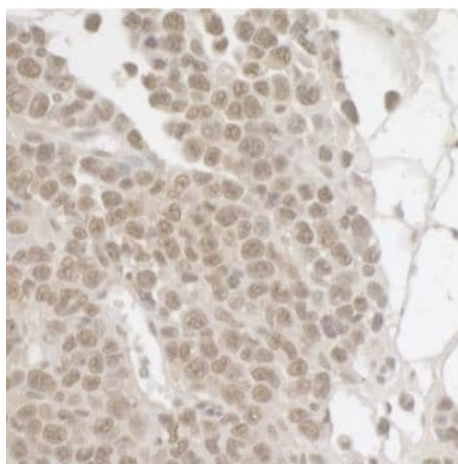
Immunohistochemistry (Formalin/PFA-fixed paraffin-embedded sections) analysis of human ovarian carcinoma tissue labelling SPF45 with ab114968 at 1/1000 (1 µg/ml). Detection: DAB.



Immunoprecipitation - Anti-SPF45 antibody  
(ab114968)

Detection of SPF45 by Western Blot of Immunoprecipitate.  
anti-SPF45 at 0.4µg/ml staining SPF45 in HeLa whole cell lysate  
immunoprecipitated using ab114968 at 3µg/mg lysate (1 mg/IP;  
20% of IP loaded/lane).

Detection: Chemiluminescence with exposure time of 10 seconds.



Immunohistochemistry (Formalin/PFA-fixed paraffin-  
embedded sections) - Anti-SPF45 antibody  
(ab114968)

Immunohistochemistry (Formalin/PFA-fixed paraffin-embedded  
sections) analysis of mouse plasmacytoma tissue labelling SPF45  
with ab114968 at 1/500 (2µg/ml). Detection: DAB.

**Please note:** All products are "FOR RESEARCH USE ONLY. NOT FOR USE IN DIAGNOSTIC PROCEDURES"

### Our Abpromise to you: Quality guaranteed and expert technical support

- Replacement or refund for products not performing as stated on the datasheet
- Valid for 12 months from date of delivery
- Response to your inquiry within 24 hours
- We provide support in Chinese, English, French, German, Japanese and Spanish
- Extensive multi-media technical resources to help you
- We investigate all quality concerns to ensure our products perform to the highest standards

If the product does not perform as described on this datasheet, we will offer a refund or replacement. For full details of the Abpromise, please visit <https://www.abcam.cn/abpromise> or contact our technical team.

## Terms and conditions

---

- Guarantee only valid for products bought direct from Abcam or one of our authorized distributors