


Anti-SPEN antibody ab72266

3 References **1 图像**

概述

产品名称	Anti-SPEN抗体
描述	兔多克隆抗体to SPEN
宿主	Rabbit
经测试应用	适用于: IP, WB
种属反应性	与反应: Human 预测可用于: Mouse, Rabbit, Horse, Guinea pig, Dog, Chimpanzee, Rhesus monkey, Gorilla, Orngutan, Elephant 
免疫原	Synthetic peptide corresponding to Human SPEN. Database link: Q96T58
阳性对照	Whole cell lysate from Hela cells.
常规说明	<p>The Life Science industry has been in the grips of a reproducibility crisis for a number of years. Abcam is leading the way in addressing this with our range of recombinant monoclonal antibodies and knockout edited cell lines for gold-standard validation. Please check that this product meets your needs before purchasing.</p> <p>If you have any questions, special requirements or concerns, please send us an inquiry and/or contact our Support team ahead of purchase. Recommended alternatives for this product can be found below, along with publications, customer reviews and Q&As</p>

性能

形式	Liquid
存放说明	Shipped at 4°C. Upon delivery aliquot and store at -20°C. Avoid freeze / thaw cycles.
存储溶液	pH: 7 Preservative: 0.09% Sodium azide Constituents: 1.815% Tris, 1.764% Sodium citrate, 0.021% PBS
纯度	Immunogen affinity purified
克隆	多克隆
同种型	IgG

应用

The Abpromise guarantee

Abpromise™ 承诺保证使用ab72266于以下的经测试应用

“应用说明”部分 下显示的仅为推荐的起始稀释度;实际最佳的稀释度/浓度应由使用者检定。

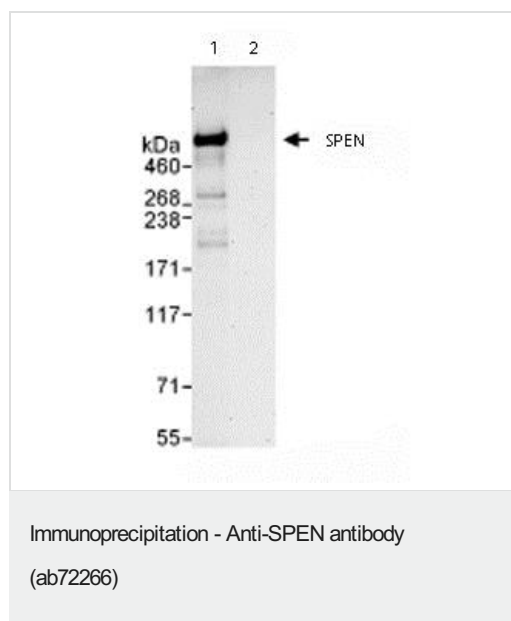
应用	Ab评论	说明
IP		Use at 2-5 µg/mg of lysate.
WB		Use at an assay dependent concentration.

靶标

相关性 SPEN is an essential corepressor protein, which probably regulates different key pathways such as the Notch pathway. It is a negative regulator of the Notch pathway via its interaction with RBPSUH, which prevents the association between NOTCH1 and RBPSUH, and therefore suppresses the transactivation activity of Notch signaling. SPEN blocks the differentiation of precursor B-cells into marginal zone B-cells. It probably represses transcription via the recruitment of large complexes containing histone deacetylase proteins. SPEN may bind both to DNA and RNA.

细胞定位 Nuclear. Associates with chromatin.

图片



Immunoprecipitation/ Western Blot of SPEN.

Lane 1: ab72266 at 3µg/mg whole cell lysate.

Lane 2: Control IgG.

ab72266 at 1µg/ml for WB.

Whole cell lysate from Hela cells at 1mg for IP, 20% of IP loaded.

Chemiluminescence with an exposure time of 3 minutes.

Please note: All products are "FOR RESEARCH USE ONLY. NOT FOR USE IN DIAGNOSTIC PROCEDURES"

Our Abpromise to you: Quality guaranteed and expert technical support

- Replacement or refund for products not performing as stated on the datasheet
- Valid for 12 months from date of delivery

- Response to your inquiry within 24 hours
- We provide support in Chinese, English, French, German, Japanese and Spanish
- Extensive multi-media technical resources to help you
- We investigate all quality concerns to ensure our products perform to the highest standards

If the product does not perform as described on this datasheet, we will offer a refund or replacement. For full details of the Abpromise, please visit <https://www.abcam.cn/abpromise> or contact our technical team.

Terms and conditions

- Guarantee only valid for products bought direct from Abcam or one of our authorized distributors