


# Anti-Spa-1 antibody ab85928

[1 References](#) [2 图像](#)

### 概述

产品名称	Anti-Spa-1抗体
描述	兔多克隆抗体to Spa-1
宿主	Rabbit
经测试应用	适用于: WB, IP
种属反应性	与反应: Mouse, Human 预测可用于: Chimpanzee, Rhesus monkey 
免疫原	Synthetic peptide corresponding to Human Spa-1 aa 992-1042. Database link: <a href="#">NP_006738.3</a>
阳性对照	HeLa cells, 293T and mouse NIH3T3 whole cell lysates
常规说明	<p>The Life Science industry has been in the grips of a reproducibility crisis for a number of years. Abcam is leading the way in addressing this with our range of recombinant monoclonal antibodies and knockout edited cell lines for gold-standard validation. Please check that this product meets your needs before purchasing.</p> <p>If you have any questions, special requirements or concerns, please send us an inquiry and/or contact our Support team ahead of purchase. Recommended alternatives for this product can be found below, along with publications, customer reviews and Q&amp;As</p>

### 性能

形式	Liquid
存放说明	Shipped at 4°C. Upon delivery aliquot and store at -20°C. Avoid freeze / thaw cycles.
存储溶液	pH: 7 Preservative: 0.09% Sodium azide Constituent: Tris citrate/phosphate
纯度	Immunogen affinity purified
纯化说明	ab85928 was affinity purified using an epitope specific to Spa-1 immobilized on solid support.
克隆	多克隆
同种型	IgG

**The Abpromise guarantee**      **Abpromise™**承诺保证使用ab85928于以下的经测试应用

“应用说明”部分 下显示的仅为推荐的起始稀释度;实际最佳的稀释度/浓度应由使用者检定。

应用	Ab评论	说明
WB		1/2000 - 1/10000. Predicted molecular weight: 112 kDa.
IP		Use at 2-5 µg/mg of lysate.

**靶标****功能**

GTPase activator for the nuclear Ras-related regulatory proteins Rap1 and Rap2 in vitro, converting it to the putatively inactive GDP-bound state.

**组织特异性**

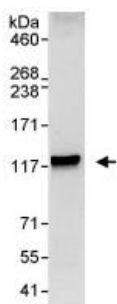
Expressed in fetal as well as in adult tissues. Expressed abundantly in the lymphoid tissues such as thymus, spleen and peripheral blood lymphocytes and also shows a significant expression in the spinal cord.

**序列相似性**

Contains 1 PDZ (DHR) domain.  
Contains 1 Rap-GAP domain.

**细胞定位**

Nucleus. Cytoplasm > perinuclear region. Endomembrane system. Mostly localized in the perinuclear membraneous region.

**图片**

Detection of Spa-1 in Immunoprecipitates of whole cell lysate from HeLa cells (1 mg for IP, 20% of IP loaded), using ab85928 at 3 µg/mg lysate for IP and at 1 µg/ml for subsequent Western blot. Detection: Chemiluminescence with an exposure time of 30 seconds.

Immunoprecipitation - Anti-Spa-1 antibody (ab85928)



**All lanes :** Anti-Spa-1 antibody (ab85928) at 0.1 µg/ml

**Lane 1 :** HeLa whole cell lysate at 50 µg

**Lane 2 :** HeLa whole cell lysate at 15 µg

**Lane 3 :** HeLa whole cell lysate at 5 µg

**Lane 4 :** 293T whole cell lysate at 50 µg

**Lane 5 :** mouse NIH3T3 whole cell lysate at 50 µg

Developed using the ECL technique.

**Predicted band size:** 112 kDa

**Observed band size:** 117 kDa

**Exposure time:** 3 minutes

**Please note:** All products are "FOR RESEARCH USE ONLY. NOT FOR USE IN DIAGNOSTIC PROCEDURES"

### Our Abpromise to you: Quality guaranteed and expert technical support

- Replacement or refund for products not performing as stated on the datasheet
- Valid for 12 months from date of delivery
- Response to your inquiry within 24 hours
- We provide support in Chinese, English, French, German, Japanese and Spanish
- Extensive multi-media technical resources to help you
- We investigate all quality concerns to ensure our products perform to the highest standards

If the product does not perform as described on this datasheet, we will offer a refund or replacement. For full details of the Abpromise, please visit <https://www.abcam.cn/abpromise> or contact our technical team.

### Terms and conditions

- Guarantee only valid for products bought direct from Abcam or one of our authorized distributors