


### Anti-SOX17 antibody ab99370

★★★★★ [1 Abreviews](#) [1 图像](#)

#### 概述

产品名称	Anti-SOX17抗体
描述	兔多克隆抗体to SOX17
宿主	Rabbit
经测试应用	适用于: WB
种属反应性	与反应: Human 预测可用于: Dog, Pig, Macaque monkey, Gorilla 
免疫原	Synthetic peptide. This information is proprietary to Abcam and/or its suppliers.
阳性对照	This antibody gave a positive signal in the following tissue lysates: Human Heart; Human Spleen; Human Testis as well as the following whole cell lysates: LNCaP; PC3; DU145.
常规说明	<p>The Life Science industry has been in the grips of a reproducibility crisis for a number of years. Abcam is leading the way in addressing this with our range of recombinant monoclonal antibodies and knockout edited cell lines for gold-standard validation. Please check that this product meets your needs before purchasing.</p> <p>If you have any questions, special requirements or concerns, please send us an inquiry and/or contact our Support team ahead of purchase. Recommended alternatives for this product can be found below, along with publications, customer reviews and Q&amp;As</p>

#### 性能

形式	Liquid
存放说明	Shipped at 4°C. Store at +4°C short term (1-2 weeks). Upon delivery aliquot. Store at -20°C or -80°C. Avoid freeze / thaw cycle.
存储溶液	pH: 7.40 Preservative: 0.02% Sodium azide Constituent: PBS  Batches of this product that have a concentration < 1mg/ml may have BSA added as a stabilising agent. If you would like information about the formulation of a specific lot, please contact our scientific support team who will be happy to help.
纯度	Immunogen affinity purified
克隆	多克隆

同种型

IgG

应用

The Abpromise guarantee

Abpromise™承诺保证使用ab99370于以下的经测试应用

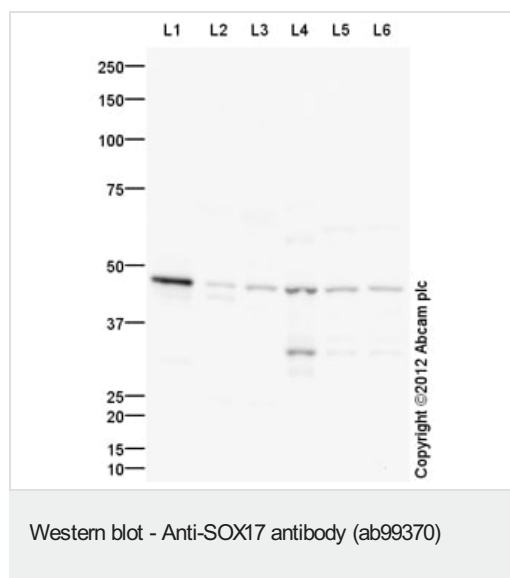
“应用说明”部分 下显示的仅为推荐的起始稀释度;实际最佳的稀释度/浓度应由使用者检定。

应用	Ab评论	说明
WB	★★★★★ (1)	Use a concentration of 1 µg/ml. Detects a band of approximately 44 kDa (predicted molecular weight: 44 kDa).

靶标

功能	Acts as transcription regulator that binds target promoter DNA and bends the DNA. Binds to the sequences 5'-AACAAT-'3 or 5'-AACAAAG-3'. Modulates transcriptional regulation via WNT3A. Inhibits Wnt signaling. Promotes degradation of activated CTNNB1. Plays a key role in the regulation of embryonic development. Required for normal looping of the embryonic heart tube. Required for normal development of the definitive gut endoderm. Probable transcriptional activator in the premeiotic germ cells.
组织特异性	Expressed in adult heart, lung, spleen, testis, ovary, placenta, fetal lung, and kidney. In normal gastrointestinal tract, it is preferentially expressed in esophagus, stomach and small intestine than in colon and rectum.
疾病相关	Defects in SOX17 are the cause of vesicoureteral reflux type 3 (VUR3) [MIM:613674]. VUR3 is a disease belonging to the group of congenital anomalies of the kidney and urinary tract. It is characterized by the reflux of urine from the bladder into the ureters and sometimes into the kidneys, and is a risk factor for urinary tract infections. Primary disease results from a developmental defect of the ureterovesical junction. In combination with intrarenal reflux, the resulting inflammatory reaction may result in renal injury or scarring, also called reflux nephropathy. Extensive renal scarring impairs renal function and may predispose patients to hypertension, proteinuria, renal insufficiency and end-stage renal disease.
序列相似性	Contains 1 HMG box DNA-binding domain. Contains 1 Sox C-terminal domain.
细胞定位	Nucleus.

图片



**All lanes :** Anti-SOX17 antibody (ab99370) at 1 µg/ml

**Lane 1 :** Human heart tissue lysate - total protein ([ab29431](#))

**Lane 2 :** Human spleen tissue lysate - total protein ([ab29699](#))

**Lane 3 :** Human testis tissue lysate - total protein ([ab30257](#))

**Lane 4 :** LNCaP human prostate carcinoma cell line lysate Whole Cell Lysate

**Lane 5 :** PC3 (Human prostate carcinoma cell line) Whole Cell Lysate Whole Cell Lysate

**Lane 6 :** DU 145 (Human prostate carcinoma cell line) Whole Cell Lysate

Lysates/proteins at 10 µg per lane.

### Secondary

**All lanes :** Goat Anti-Rabbit IgG H&L (HRP) preadsorbed ([ab97080](#)) at 1/5000 dilution

Developed using the ECL technique.

Performed under reducing conditions.

**Predicted band size:** 44 kDa

**Observed band size:** 44 kDa

**Additional bands at:** 34 kDa. We are unsure as to the identity of these extra bands.

**Exposure time:** 2 minutes

**Please note:** All products are "FOR RESEARCH USE ONLY. NOT FOR USE IN DIAGNOSTIC PROCEDURES"

### Our Abpromise to you: Quality guaranteed and expert technical support

- Replacement or refund for products not performing as stated on the datasheet

- Valid for 12 months from date of delivery
- Response to your inquiry within 24 hours
- We provide support in Chinese, English, French, German, Japanese and Spanish
- Extensive multi-media technical resources to help you
- We investigate all quality concerns to ensure our products perform to the highest standards

If the product does not perform as described on this datasheet, we will offer a refund or replacement. For full details of the Abpromise, please visit <https://www.abcam.cn/abpromise> or contact our technical team.

#### **Terms and conditions**

---

- Guarantee only valid for products bought direct from Abcam or one of our authorized distributors