


# Anti-Somatostatin Receptor 1/SSTR1 antibody ab100881

★☆☆☆☆ [1 Abreviews](#) [1 References](#) [3 图像](#)

### 概述

产品名称	Anti-Somatostatin Receptor 1/SSTR1抗体
描述	兔多克隆抗体to Somatostatin Receptor 1/SSTR1
宿主	Rabbit
经测试应用	适用于: ICC/IF
种属反应性	与反应: Rat 预测可用于: Horse, Cow, Dog, Human, Pig 
免疫原	Synthetic peptide corresponding to Mouse Somatostatin Receptor 1/SSTR1 aa 374-391 (C terminal). Sequence: ESGGVFRNGTCASRISTL

 [Run BLAST with](#)

 [Run BLAST with](#)

### 常规说明

The Life Science industry has been in the grips of a reproducibility crisis for a number of years. Abcam is leading the way in addressing this with our range of recombinant monoclonal antibodies and knockout edited cell lines for gold-standard validation. Please check that this product meets your needs before purchasing.

If you have any questions, special requirements or concerns, please send us an inquiry and/or contact our Support team ahead of purchase. Recommended alternatives for this product can be found below, along with publications, customer reviews and Q&As

### 性能

形式	Liquid
存放说明	Shipped at 4°C. Upon delivery aliquot and store at -20°C. Avoid freeze / thaw cycles.
存储溶液	Preservative: 0.02% Sodium azide Constituent: Whole serum
纯度	Whole antiserum
克隆	多克隆
同种型	IgG

### 应用

## The Abpromise guarantee

**Abpromise™** 承诺保证使用ab100881于以下的经测试应用

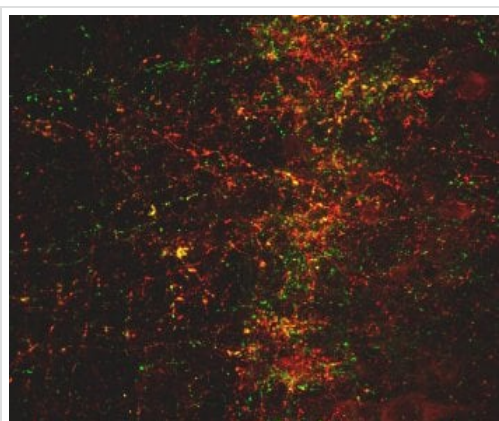
“应用说明”部分 下显示的仅为推荐的起始稀释度;实际最佳的稀释度/浓度应由使用者检定。

应用	Ab评论	说明
ICC/IF		Use at an assay dependent concentration.

## 靶标

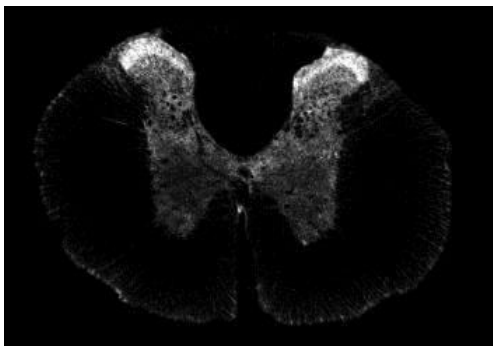
<b>功能</b>	Receptor for somatostatin with higher affinity for somatostatin-14 than -28. This receptor is coupled via pertussis toxin sensitive G proteins to inhibition of adenylyl cyclase. In addition it stimulates phosphotyrosine phosphatase and Na(+)/H(+) exchanger via pertussis toxin insensitive G proteins.
<b>组织特异性</b>	Fetal kidney, fetal liver, and adult pancreas, brain, lung, jejunum and stomach.
<b>序列相似性</b>	Belongs to the G-protein coupled receptor 1 family.
<b>细胞定位</b>	Cell membrane.

## 图片



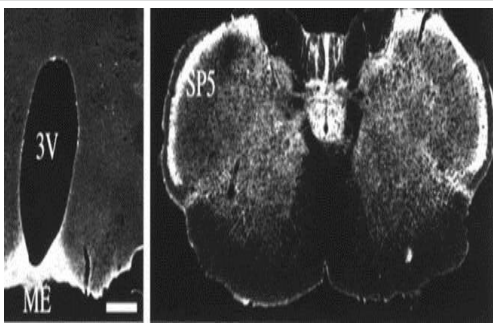
ab100881 at 1/5000 showing dual labeling of anti-sst1 (green) and somatostatin (red). Anti-Sst1 shows sst1 in neuronal terminals co-localized with somatostatin

Immunocytochemistry/ Immunofluorescence - Anti-Somatostatin Receptor 1/SSTR1 antibody (ab100881)



Immunocytochemistry/ Immunofluorescence - Anti-Somatostatin Receptor 1/SSTR1 antibody (ab100881)

ab100881 showing anti-Sst1 depicts sst1 as a presynaptic receptor in the superficial layers of the spinal cord dorsal horn.



Immunocytochemistry/ Immunofluorescence - Anti-Somatostatin Receptor 1/SSTR1 antibody (ab100881)

Immunocytochemistry/ Immunofluorescence showing Somatostatin Receptor 1/SSTR1 staining in rat brain using ab100881.

**Please note:** All products are "FOR RESEARCH USE ONLY. NOT FOR USE IN DIAGNOSTIC PROCEDURES"

### Our Abpromise to you: Quality guaranteed and expert technical support

---

- Replacement or refund for products not performing as stated on the datasheet
- Valid for 12 months from date of delivery
- Response to your inquiry within 24 hours
- We provide support in Chinese, English, French, German, Japanese and Spanish
- Extensive multi-media technical resources to help you
- We investigate all quality concerns to ensure our products perform to the highest standards

If the product does not perform as described on this datasheet, we will offer a refund or replacement. For full details of the Abpromise, please visit <https://www.abcam.cn/abpromise> or contact our technical team.

### Terms and conditions

---

- Guarantee only valid for products bought direct from Abcam or one of our authorized distributors