

# Anti-Sohlh2 antibody ab101402

★★★★★ [1 Abreviews](#) [3 References](#) [2 图像](#)

### 概述

产品名称	Anti-Sohlh2抗体
描述	兔多克隆抗体to Sohlh2
宿主	Rabbit
经测试应用	适用于: WB, IHC-P
种属反应性	与反应: Human
免疫原	Recombinant protein fragment containing a sequence corresponding to a region within amino acids 45-198 of Human Sohlh2 (AAH25383; UniProt ID: Q9NX45 isoform 2).
阳性对照	NT2D1, IMR32, U-87MG and MCF7 cell lysates
常规说明	<p>The Life Science industry has been in the grips of a reproducibility crisis for a number of years. Abcam is leading the way in addressing this with our range of recombinant monoclonal antibodies and knockout edited cell lines for gold-standard validation. Please check that this product meets your needs before purchasing.</p> <p>If you have any questions, special requirements or concerns, please send us an inquiry and/or contact our Support team ahead of purchase. Recommended alternatives for this product can be found below, along with publications, customer reviews and Q&amp;As</p>

### 性能

形式	Liquid
存放说明	Shipped at 4°C. Upon delivery aliquot and store at -20°C or -80°C. Avoid repeated freeze / thaw cycles.
存储溶液	<p>pH: 7.00</p> <p>Preservative: 0.01% Thimerosal (merthiolate)</p> <p>Constituents: 1.21% Tris, 0.75% Glycine, 20% Glycerol (glycerin, glycerine)</p>
纯度	Immunogen affinity purified
克隆	多克隆
同种型	IgG

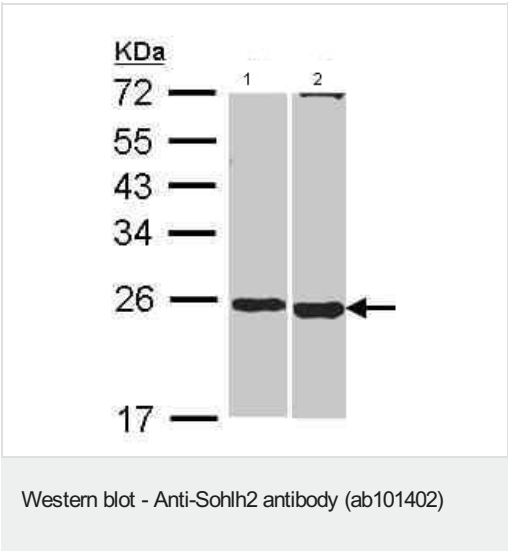
### 应用

<b>The Abpromise guarantee</b> <b>Abpromise™</b> 承诺保证使用ab101402于以下的经测试应用		
“应用说明”部分 下显示的仅为推荐的起始稀释度;实际最佳的稀释度/浓度应由使用者检定。		
应用	Ab评论	说明
WB		1/500 - 1/3000. Predicted molecular weight: 25 kDa.
IHC-P	★★☆☆☆ (1)	1/100 - 1/500. Suggested antigen retrieval: use heat mediated 10 mM Citrate buffer or Tris EDTA buffer (pH8.0).

靶标

功能	Probable transcription factor, which may be involved in spermatogenesis and oogenesis.
序列相似性	Contains 1 bHLH (basic helix-loop-helix) domain.
细胞定位	Nucleus.

图片



All lanes : Anti-Sohlh2 antibody (ab101402) at 1/1000 dilution

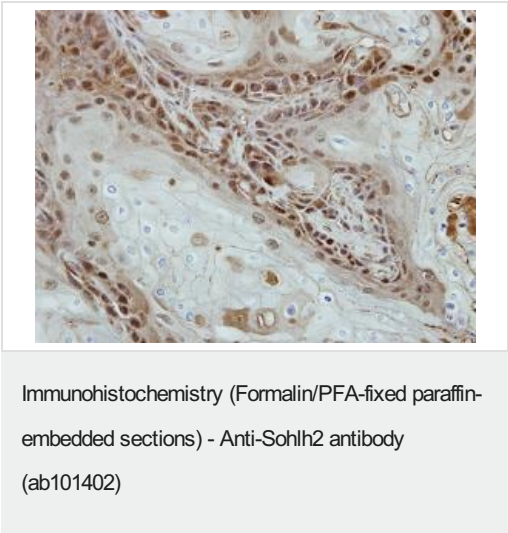
Lane 1 : NT2D1 whole cell lysate

Lane 2 : MCF7 whole cell lysate

Lysates/proteins at 30 µg per lane.

Predicted band size: 25 kDa

12% SDS PAGE



Immunohistochemical analysis of paraffin embedded Ca922 xenograft, using ab101402 at a 1/500 dilution.

**Please note:** All products are "FOR RESEARCH USE ONLY. NOT FOR USE IN DIAGNOSTIC PROCEDURES"

### **Our Abpromise to you: Quality guaranteed and expert technical support**

---

- Replacement or refund for products not performing as stated on the datasheet
- Valid for 12 months from date of delivery
- Response to your inquiry within 24 hours
  
- We provide support in Chinese, English, French, German, Japanese and Spanish
- Extensive multi-media technical resources to help you
- We investigate all quality concerns to ensure our products perform to the highest standards

If the product does not perform as described on this datasheet, we will offer a refund or replacement. For full details of the Abpromise, please visit <https://www.abcam.cn/abpromise> or contact our technical team.

### **Terms and conditions**

---

- Guarantee only valid for products bought direct from Abcam or one of our authorized distributors