



Anti-Sodium/Hydrogen Exchanger 3/NHE-3 antibody ab95299

[1 Abreviews](#) [5 References](#) [2 图像](#)

概述

产品名称	Anti-Sodium/Hydrogen Exchanger 3/NHE-3抗体
描述	兔多克隆抗体to Sodium/Hydrogen Exchanger 3/NHE-3
宿主	Rabbit
经测试应用	适用于: WB, IHC-P
种属反应性	与反应: Rat
免疫原	Synthetic peptide corresponding to Rat Sodium/Hydrogen Exchanger 3/NHE-3 aa 809-831 (C terminal). Sequence: DSFLQADGP EEQLQPASPESTHM Database link: NP_036786 <div>  Run BLAST with  Run BLAST with </div>
阳性对照	Rat kidney tissue lysate. IHC-P: rat colon tissue.
常规说明	<p>The Life Science industry has been in the grips of a reproducibility crisis for a number of years. Abcam is leading the way in addressing this with our range of recombinant monoclonal antibodies and knockout edited cell lines for gold-standard validation. Please check that this product meets your needs before purchasing.</p> <p>If you have any questions, special requirements or concerns, please send us an inquiry and/or contact our Support team ahead of purchase. Recommended alternatives for this product can be found below, along with publications, customer reviews and Q&As</p>

性能

形式	Liquid
存放说明	Shipped at 4°C. Store at -20°C. Stable for 12 months at -20°C.
存储溶液	Preservative: 0.09% Sodium azide Constituents: 50% Glycerol (glycerin, glycerine), PBS
纯度	Immunogen affinity purified
克隆	多克隆
同种型	IgG

应用

The Abpromise guarantee **Abpromise™**承诺保证使用ab95299于以下的经测试应用

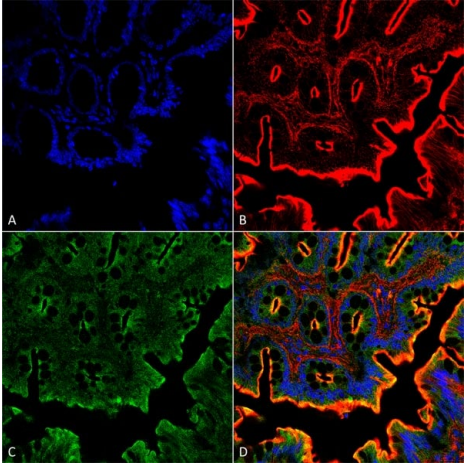
“应用说明”部分 下显示的仅为推荐的起始稀释度;实际最佳的稀释度/浓度应由使用者检定。

应用	Ab评论	说明
WB		1/1000. Detects a band of approximately 84 kDa (predicted molecular weight: 93 kDa).
IHC-P		1/25.

靶标

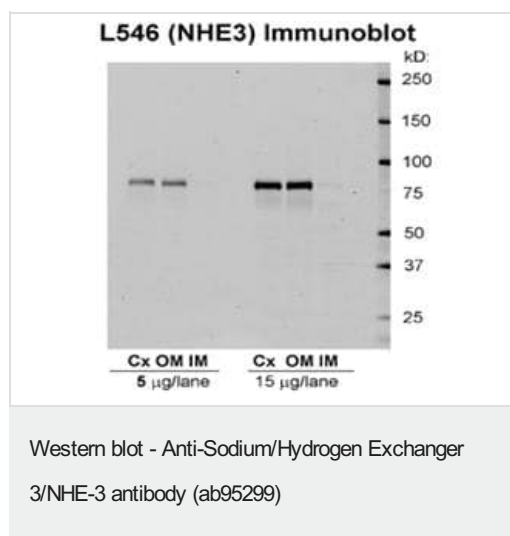
功能	Involved in pH regulation to eliminate acids generated by active metabolism or to counter adverse environmental conditions. Major proton extruding system driven by the inward sodium ion chemical gradient. Plays an important role in signal transduction.
序列相似性	Belongs to the monovalent cation:proton antiporter 1 (CPA1) transporter (TC 2.A.36) family.
翻译后修饰	Phosphorylated by PKA, which inhibits activity.
细胞定位	Membrane. In intestinal epithelial cells, localizes to the ileal brush border.

图片



Immunohistochemistry (Formalin/PFA-fixed paraffin-embedded sections) - Anti-Sodium/Hydrogen Exchanger 3/NHE-3 antibody (ab95299)

Immunohistochemical analysis of paraffin-embedded formalin fixed (4%) rat colon tissue labelling Exchanger 3/NHE-3 with ab95299 at 1/25 dilution, followed by secondary antibody Goat Anti-Rabbit IgG (Alexa Fluor 488) (Green). Membrane and secretory staining on rat colon tissue is observed. Counter stained with Actin-binding Phalloidin-Alexa Fluor 633; DAPI (blue) nuclear stain. (A) DAPI (blue) nuclear stain. (B) Phalloidin Alex Fluor 633 (Red) F-Actin stain. (C) Exchanger 3/NHE-3 Antibody (D) Composite image.



Western blot detection of Sodium/Hydrogen Exchanger 3 / NHE-3 in Rat kidney tissues using ab95299 at 1:1000 dilution.

Please note: All products are "FOR RESEARCH USE ONLY. NOT FOR USE IN DIAGNOSTIC PROCEDURES"

Our Abpromise to you: Quality guaranteed and expert technical support

- Replacement or refund for products not performing as stated on the datasheet
- Valid for 12 months from date of delivery
- Response to your inquiry within 24 hours
- We provide support in Chinese, English, French, German, Japanese and Spanish
- Extensive multi-media technical resources to help you
- We investigate all quality concerns to ensure our products perform to the highest standards

If the product does not perform as described on this datasheet, we will offer a refund or replacement. For full details of the Abpromise, please visit <https://www.abcam.cn/abpromise> or contact our technical team.

Terms and conditions

- Guarantee only valid for products bought direct from Abcam or one of our authorized distributors