

Anti-Sodium/Hydrogen Exchanger 1/NHE-1 antibody ab67314

★★★★★ [1 Abreviews](#) [14 References](#) [2 图像](#)

概述

产品名称	Anti-Sodium/Hydrogen Exchanger 1/NHE-1抗体
描述	兔多克隆抗体to Sodium/Hydrogen Exchanger 1/NHE-1
宿主	Rabbit
经测试应用	适用于: IHC-P, WB, ICC, ICC/IF, IHC-FoFr
种属反应性	与反应: Mouse, Rat, Human
免疫原	Synthetic peptide corresponding to Human Sodium/Hydrogen Exchanger 1/NHE-1 (internal sequence). The immunogen is located within amino acids 490 - 540 of Sodium/Hydrogen Exchanger 1/NHE-1. Database link: P19634
阳性对照	WB: MOLT4 cell lysate. IHC-P: Human brain tissue.
常规说明	<p>The Life Science industry has been in the grips of a reproducibility crisis for a number of years. Abcam is leading the way in addressing this with our range of recombinant monoclonal antibodies and knockout edited cell lines for gold-standard validation. Please check that this product meets your needs before purchasing.</p> <p>If you have any questions, special requirements or concerns, please send us an inquiry and/or contact our Support team ahead of purchase. Recommended alternatives for this product can be found below, along with publications, customer reviews and Q&As</p>

性能

形式	Liquid
存放说明	Shipped at 4°C. Store at +4°C.
存储溶液	pH: 7.2 Preservative: 0.02% Sodium azide Constituent: PBS
纯度	Immunogen affinity purified
克隆	多克隆
同种型	IgG

应用

The Abpromise guarantee

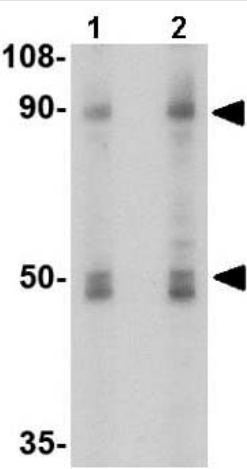
Abpromise™承诺保证使用ab67314于以下的经测试应用

“应用说明”部分 下显示的仅为推荐的起始稀释度;实际最佳的稀释度/浓度应由使用者检定。

应用	Ab评论	说明
IHC-P		Use a concentration of 2.5 µg/ml.
WB	★★★★★ (1)	Use a concentration of 1 - 2 µg/ml. Detects a band of approximately 91 kDa (predicted molecular weight: 91 kDa).
ICC		Use at an assay dependent concentration.
ICC/IF		Use at an assay dependent concentration. PubMed: 20817726
IHC-FoFr		Use at an assay dependent concentration. PubMed: 20712402

靶标	
功能	Involved in pH regulation to eliminate acids generated by active metabolism or to counter adverse environmental conditions. Major proton extruding system driven by the inward sodium ion chemical gradient. Plays an important role in signal transduction.
组织特异性	Kidney and intestine.
序列相似性	Belongs to the monovalent cation:proton antiporter 1 (CPA1) transporter (TC 2.A.36) family.
翻译后修饰	Phosphorylated upon DNA damage, probably by ATM or ATR. O-glycosylated.
细胞定位	Membrane.

图片



Lane 1 : Anti-Sodium/Hydrogen Exchanger 1/NHE-1 antibody (ab67314) at 1 µg/ml

Lane 2 : Anti-Sodium/Hydrogen Exchanger 1/NHE-1 antibody (ab67314) at 2 µg/ml

All lanes : MOLT4 cell lysate

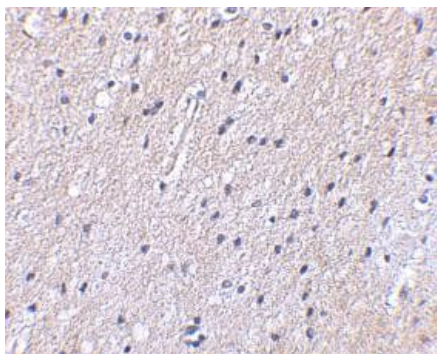
Lysates/proteins at 15 µg per lane.

Predicted band size: 91 kDa

Observed band size: 91 kDa

Additional bands at: 48 kDa (possible isoform)

Western blot - Anti-Sodium/Hydrogen Exchanger 1/NHE-1 antibody (ab67314)



Immunohistochemical staining of Sodium / Hydrogen Exchanger 1 in human brain tissue using ab67314 at 2.5 µg/ml.

Immunohistochemistry (Formalin/PFA-fixed paraffin-embedded sections) - Anti-Sodium/Hydrogen Exchanger 1/NHE-1 antibody (ab67314)

Please note: All products are "FOR RESEARCH USE ONLY. NOT FOR USE IN DIAGNOSTIC PROCEDURES"

Our Abpromise to you: Quality guaranteed and expert technical support

- Replacement or refund for products not performing as stated on the datasheet
- Valid for 12 months from date of delivery
- Response to your inquiry within 24 hours
- We provide support in Chinese, English, French, German, Japanese and Spanish
- Extensive multi-media technical resources to help you
- We investigate all quality concerns to ensure our products perform to the highest standards

If the product does not perform as described on this datasheet, we will offer a refund or replacement. For full details of the Abpromise, please visit <https://www.abcam.cn/abpromise> or contact our technical team.

Terms and conditions

- Guarantee only valid for products bought direct from Abcam or one of our authorized distributors