

Anti-Sodium Potassium ATPase antibody - Plasma Membrane Marker ab58475

★★★★★ [1 Abreviews](#) [24 References](#) [2 图像](#)

概述

| | |
|-------|---|
| 产品名称 | Anti-Sodium Potassium ATPase抗体- Plasma膜Marker |
| 描述 | 兔多克隆抗体to Sodium Potassium ATPase - Plasma膜Marker |
| 宿主 | Rabbit |
| 经测试应用 | 适用于: IHC-P, WB |
| 种属反应性 | 与反应: Human |
| 免疫原 | Synthetic non-phosphopeptide derived from human Sodium Potassium ATPase around the phosphorylation site of serine 16 (A-V-S ^P -E-H). |
| 常规说明 | <p>The Life Science industry has been in the grips of a reproducibility crisis for a number of years. Abcam is leading the way in addressing this with our range of recombinant monoclonal antibodies and knockout edited cell lines for gold-standard validation. Please check that this product meets your needs before purchasing.</p> <p>If you have any questions, special requirements or concerns, please send us an inquiry and/or contact our Support team ahead of purchase. Recommended alternatives for this product can be found below, along with publications, customer reviews and Q&As</p> |

性能

| | |
|------|--|
| 形式 | Liquid |
| 存放说明 | Shipped at 4°C. Store at +4°C short term (1-2 weeks). Upon delivery aliquot. Store at -20°C. Stable for 12 months at -20°C. |
| 存储溶液 | <p>pH: 7.40</p> <p>Preservative: 0.02% Sodium azide</p> <p>Constituents: PBS, 50% Glycerol, 0.87% Sodium chloride</p> <p>Without Mg+2 and Ca+2</p> |
| 纯度 | Immunogen affinity purified |
| 克隆 | 多克隆 |
| 同种型 | IgG |

应用

The Abpromise guarantee **Abpromise™** 承诺保证使用ab58475于以下的经测试应用

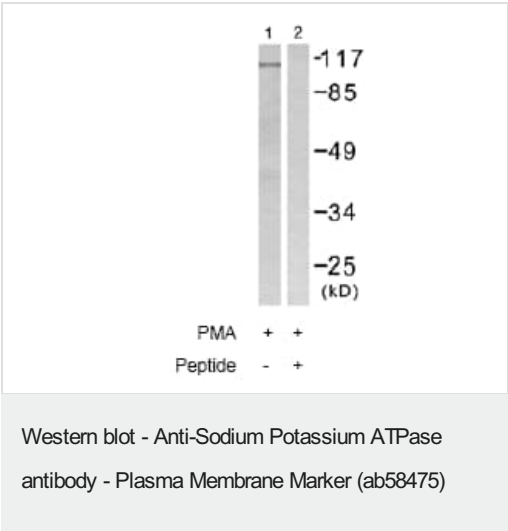
“应用说明”部分 下显示的仅为推荐的起始稀释度;实际最佳的稀释度/浓度应由使用者检定。

| 应用 | Ab评论 | 说明 |
|-------|------|--|
| IHC-P | | 1/50 - 1/100. |
| WB | | 1/500 - 1/1000. Detects a band of approximately 113 kDa (predicted molecular weight: 113 kDa). |

靶标

| | |
|-------|---|
| 功能 | This is the catalytic component of the active enzyme, which catalyzes the hydrolysis of ATP coupled with the exchange of sodium and potassium ions across the plasma membrane. This action creates the electrochemical gradient of sodium and potassium ions, providing the energy for active transport of various nutrients. |
| 序列相似性 | Belongs to the cation transport ATPase (P-type) (TC 3.A.3) family. Type IIC subfamily. |
| 翻译后修饰 | Phosphorylation on Tyr-10 modulates pumping activity. |
| 细胞定位 | Cell membrane. Melanosome. Identified by mass spectrometry in melanosome fractions from stage I to stage IV. |

图片



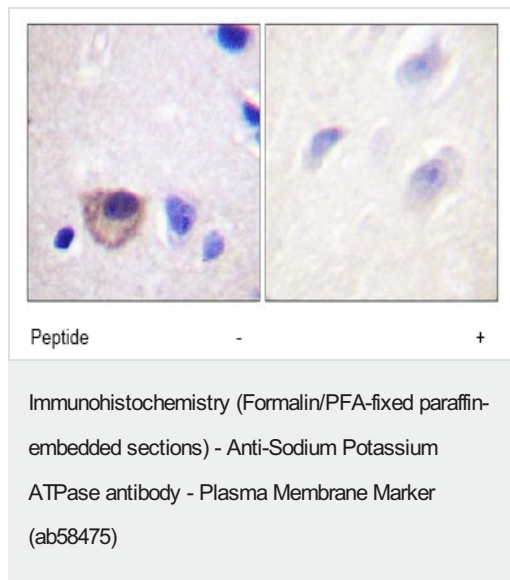
All lanes : Anti-Sodium Potassium ATPase antibody - Plasma Membrane Marker (ab58475) at 1/500 dilution

Lane 1 : 293 cell extracts treated with PMA (125ng/ml, 30mins)

Lane 2 : 293 cell extracts treated with PMA (125ng/ml, 30mins) with immunising peptide

Predicted band size: 113 kDa

Observed band size: 113 kDa



ab58475 at 1/50 dilution staining Sodium Potassium ATPase in human brain by Immunohistochemistry, Paraffin embedded tissue, in the absence or presence of the immunising peptide.

Please note: All products are "FOR RESEARCH USE ONLY. NOT FOR USE IN DIAGNOSTIC PROCEDURES"

Our Abpromise to you: Quality guaranteed and expert technical support

- Replacement or refund for products not performing as stated on the datasheet
- Valid for 12 months from date of delivery
- Response to your inquiry within 24 hours
- We provide support in Chinese, English, French, German, Japanese and Spanish
- Extensive multi-media technical resources to help you
- We investigate all quality concerns to ensure our products perform to the highest standards

If the product does not perform as described on this datasheet, we will offer a refund or replacement. For full details of the Abpromise, please visit <https://www.abcam.cn/abpromise> or contact our technical team.

Terms and conditions

- Guarantee only valid for products bought direct from Abcam or one of our authorized distributors