


### Anti-SNF2H antibody ab72499

★★★★★ [1 Abreviews](#) [11 References](#) [4 图像](#)

#### 概述

产品名称	Anti-SNF2H抗体
描述	兔多克隆抗体to SNF2H
宿主	Rabbit
经测试应用	适用于: ICC/IF, IHC-P, WB, IP, IHC-FrFI
种属反应性	与反应: Mouse, Human 预测可用于: Rat, Rabbit, Horse, Guinea pig, Cow, Dog, Pig, Chimpanzee, Rhesus monkey, Gorilla, Orangutan 
免疫原	Synthetic peptide corresponding to a region between residues 50 and 100 of human SNF2H (NP_003592.2)
常规说明	<p>The Life Science industry has been in the grips of a reproducibility crisis for a number of years. Abcam is leading the way in addressing this with our range of recombinant monoclonal antibodies and knockout edited cell lines for gold-standard validation. Please check that this product meets your needs before purchasing.</p> <p>If you have any questions, special requirements or concerns, please send us an inquiry and/or contact our Support team ahead of purchase. Recommended alternatives for this product can be found below, along with publications, customer reviews and Q&amp;As</p>

#### 性能

形式	Liquid
存放说明	Shipped at 4°C. Upon delivery aliquot and store at -20°C. Avoid freeze / thaw cycles.
存储溶液	pH: 6.8 Preservative: 0.09% Sodium azide Constituents: 0.1% BSA, Tris buffered saline
纯度	Immunogen affinity purified
纯化说明	ab72499 was affinity purified using an epitope specific to SNF2H immobilized on solid support.
克隆	多克隆
同种型	IgG

#### 应用

The Abpromise guarantee      **Abpromise™**承诺保证使用ab72499于以下的经测试应用

“应用说明”部分 下显示的仅为推荐的起始稀释度;实际最佳的稀释度/浓度应由使用者检定。

应用	Ab评论	说明
ICC/IF	★★★★★ (1)	Use a concentration of 1 µg/ml.
IHC-P		Use a concentration of 1 µg/ml. Perform heat mediated antigen retrieval with citrate buffer pH 6 before commencing with IHC staining protocol.
WB		1/2000 - 1/10000. Detects a band of approximately 122 kDa (predicted molecular weight: 122 kDa).
IP		Use at 2-5 µg/mg of lysate.
IHC-FrFI		Use at an assay dependent concentration. PubMed: 24946904

靶标

**功能** Helicase that possesses intrinsic ATP-dependent nucleosome-remodeling activity. Complexes containing SMARCA5 are capable of forming ordered nucleosome arrays on chromatin; this may require intact histone H4 tails. Also required for replication of pericentric heterochromatin in S-phase specifically in conjunction with BAZ1A. Probably plays a role in repression of poll dependent transcription of the rDNA locus, through the recruitment of the SIN3/HDAC1 corepressor complex to the rDNA promoter. Essential component of the WICH complex, a chromatin remodeling complex that mobilizes nucleosomes and reconfigures irregular chromatin to a regular nucleosomal array structure. The WICH complex regulates the transcription of various genes, has a role in RNA polymerase I and RNA polymerase III transcription, mediates the histone H2AX phosphorylation at 'Tyr-142', and is involved in the maintenance of chromatin structures during DNA replication processes. Essential component of the NoRC (nucleolar remodeling complex) complex, a complex that mediates silencing of a fraction of rDNA by recruiting histone-modifying enzymes and DNA methyltransferases, leading to heterochromatin formation and transcriptional silencing.

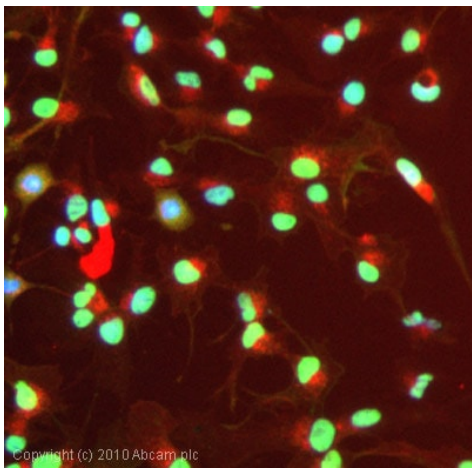
**组织特异性** Ubiquitously expressed.

**序列相似性** Belongs to the SNF2/RAD54 helicase family. ISWI subfamily.  
Contains 1 helicase ATP-binding domain.  
Contains 1 helicase C-terminal domain.  
Contains 2 SANT domains.

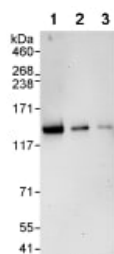
**发展阶段** Overexpressed in CD34-positive erythrocyte progenitor cells in acute myeloid leukemia. Down-regulation correlates with hematologic remission following chemotherapy.

**细胞定位** Nucleus.

图片



Immunocytochemistry/ Immunofluorescence - Anti-SNF2H antibody (ab72499)



Western blot - Anti-SNF2H antibody (ab72499)

ICC/IF image of ab72499 stained HepG2 cells. The cells were 4% formaldehyde fixed (10 min) and then incubated in 1%BSA / 10% normal goat serum / 0.3M glycine in 0.1% PBS-Tween for 1h to permeabilise the cells and block non-specific protein-protein interactions. The cells were then incubated with the antibody (ab72499, 1µg/ml) overnight at +4°C. The secondary antibody (green) was Alexa Fluor® 488 goat anti-rabbit IgG (H+L) used at a 1/1000 dilution for 1h. Alexa Fluor® 594 WGA was used to label plasma membranes (red) at a 1/200 dilution for 1h. DAPI was used to stain the cell nuclei (blue) at a concentration of 1.43µM.

**All lanes :** Anti-SNF2H antibody (ab72499) at 0.04 µg/ml

**Lane 1 :** HeLa whole cell lysate at 50 µg

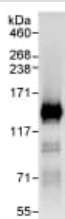
**Lane 2 :** HeLa whole cell lysate at 15 µg

**Lane 3 :** HeLa whole cell lysate at 5 µg

**Predicted band size:** 122 kDa

**Observed band size:** 122 kDa

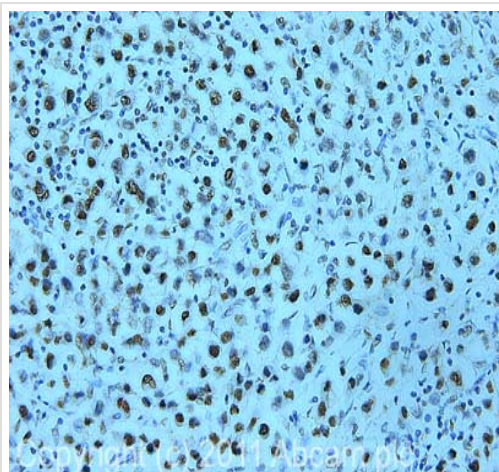
**Exposure time:** 3 minutes



Immunoprecipitation - Anti-SNF2H antibody (ab72499)

Detection of SNF2H by Western Blot of Immunoprecipitate. ab72499 at 1µg/ml staining SNF2H in HeLa whole cell lysate immunoprecipitated using ab72499 at 3µg/mg lysate (1 mg/IP; 20% of IP loaded/lane).

Detection: Chemiluminescence with exposure time of 10 seconds.



Immunohistochemistry (Formalin/PFA-fixed paraffin-embedded sections) - Anti-SNF2H antibody (ab72499)

IHC image of ab72499 staining in human breast cancer formalin fixed paraffin embedded tissue section, performed on a Leica Bond™ system using the standard protocol F. The section was pre-treated using heat mediated antigen retrieval with sodium citrate buffer (pH6, epitope retrieval solution 1) for 20 mins. The section was then incubated with ab72499, 1µg/ml, for 15 mins at room temperature and detected using an HRP conjugated compact polymer system. DAB was used as the chromogen. The section was then counterstained with haematoxylin and mounted with DPX.

For other IHC staining systems (automated and non-automated) customers should optimize variable parameters such as antigen retrieval conditions, primary antibody concentration and antibody incubation times.

**Please note:** All products are "FOR RESEARCH USE ONLY. NOT FOR USE IN DIAGNOSTIC PROCEDURES"

### Our Abpromise to you: Quality guaranteed and expert technical support

- Replacement or refund for products not performing as stated on the datasheet
- Valid for 12 months from date of delivery
- Response to your inquiry within 24 hours
- We provide support in Chinese, English, French, German, Japanese and Spanish
- Extensive multi-media technical resources to help you
- We investigate all quality concerns to ensure our products perform to the highest standards

If the product does not perform as described on this datasheet, we will offer a refund or replacement. For full details of the Abpromise, please visit <https://www.abcam.cn/abpromise> or contact our technical team.

### Terms and conditions

- Guarantee only valid for products bought direct from Abcam or one of our authorized distributors