

Anti-SNAP25 antibody [EPR3275] ab109105

敲除验证
重组
RabMAb

★★★★★
[3 Abreviews](#)
[19 References](#)
[6 图像](#)

概述

产品名称	Anti-SNAP25抗体[EPR3275]
描述	兔单克隆抗体[EPR3275] to SNAP25
宿主	Rabbit
经测试应用	适用于: Flow Cyt (Intra), WB, ICC/IF
种属反应性	与反应: Mouse, Rat, Human
免疫原	Synthetic peptide. This information is proprietary to Abcam and/or its suppliers.
阳性对照	WB: Human brain, Neuro 2a, mouse brain, mouse hippocampus, rat brain, rat hippocampus cell lysates. ICC/IF: Neuro-2a(Mouse neuroblastoma neuroblast)
常规说明	<p>We are constantly working hard to ensure we provide our customers with best in class antibodies. As a result of this work we are pleased to now offer this antibody in purified format. We are in the process of updating our datasheets. The purified format is designated 'PUR' on our product labels. If you have any questions regarding this update, please contact our Scientific Support team.</p> <p>This product is a recombinant monoclonal antibody, which offers several advantages including:</p> <ul style="list-style-type: none"> - High batch-to-batch consistency and reproducibility - Improved sensitivity and specificity - Long-term security of supply - Animal-free production <p>For more information see here.</p> <p>Our RabMAb[®] technology is a patented hybridoma-based technology for making rabbit monoclonal antibodies. For details on our patents, please refer to RabMAb[®] patents.</p>

性能

形式	Liquid
存放说明	Shipped at 4°C. Store at -20°C. Stable for 12 months at -20°C.
存储溶液	<p>pH: 7.20</p> <p>Preservative: 0.01% Sodium azide</p> <p>Constituents: 59% PBS, 40% Glycerol (glycerin, glycerine), 0.05% BSA</p>
纯度	Protein A purified

克隆	单克隆
克隆编号	EPR3275
同种型	IgG

应用

The Abpromise guarantee

Abpromise™承诺保证使用ab109105于以下的经测试应用

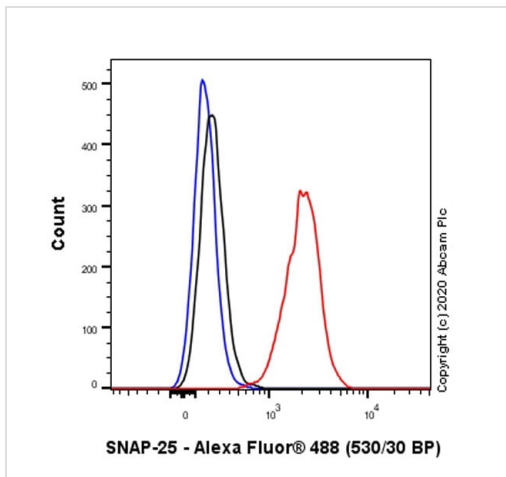
“应用说明”部分 下显示的仅为推荐的起始稀释度;实际最佳的稀释度/浓度应由使用者检定。

应用	Ab评论	说明
Flow Cyt (Intra)		1/200.
WB	★★★★★ (3)	1/1000. Predicted molecular weight: 23 kDa.
ICC/IF		1/250.

靶标

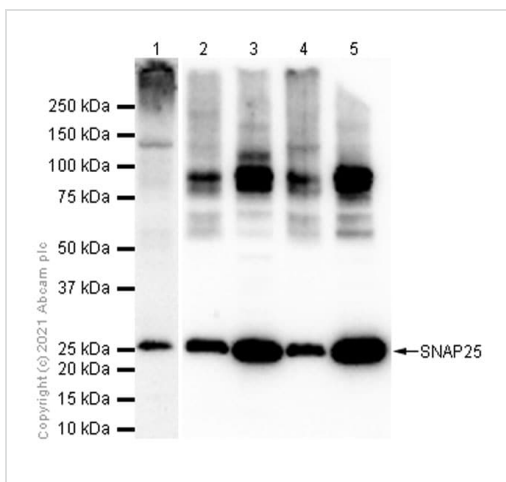
功能	t-SNARE involved in the molecular regulation of neurotransmitter release. May play an important role in the synaptic function of specific neuronal systems. Associates with proteins involved in vesicle docking and membrane fusion. Regulates plasma membrane recycling through its interaction with CENPF.
组织特异性	Neurons of the neocortex, hippocampus, piriform cortex, anterior thalamic nuclei, pontine nuclei, and granule cells of the cerebellum.
序列相似性	Belongs to the SNAP-25 family. Contains 2 t-SNARE coiled-coil homology domains.
翻译后修饰	Palmitoylated. Cys-85 appears to be the main site, and palmitoylation is required for membrane association.
细胞定位	Cytoplasm > perinuclear region. Cell membrane. Cell junction > synapse > synaptosome. Membrane association requires palmitoylation. Expressed throughout cytoplasm, concentrating at the perinuclear region.

图片



Flow Cytometry (Intracellular) - Anti-SNAP25 antibody [EPR3275] (ab109105)

Flow Cytometry analysis of Neuro-2a(Mouse neuroblastoma neuroblast) cells labelling SNAP25 with Purified ab109105 at 1:200 dilution (10 µg/ml) (Red). Cells were fixed with 4% Paraformaldehyde and permeabilised with 90% Methanol. A Goat anti rabbit IgG (Alexa Fluor™ 488, [ab150077](#)) secondary antibody was used at 1:2000. Isotype control - Rabbit monoclonal IgG (Black). Unlabelled control - Cell without incubation with primary antibody and secondary antibody (Blue).



Western blot - Anti-SNAP25 antibody [EPR3275] (ab109105)

All lanes : Anti-SNAP25 antibody [EPR3275] (ab109105) at 1/1000 dilution (Purified)

Lane 1 : Neuro-2a (Mouse neuroblastoma neuroblast) whole cell lysate

Lane 2 : Mouse brain lysate

Lane 3 : Mouse hippocampus lysate

Lane 4 : Rat brain lysate

Lane 5 : Rat hippocampus lysate

Secondary

All lanes : Goat Anti-Rabbit IgG H&L (HRP) ([ab97051](#)) at 1/20000 dilution

Predicted band size: 23 kDa

Observed band size: 25 kDa



Western blot - Anti-SNAP25 antibody [EPR3275] (ab109105)

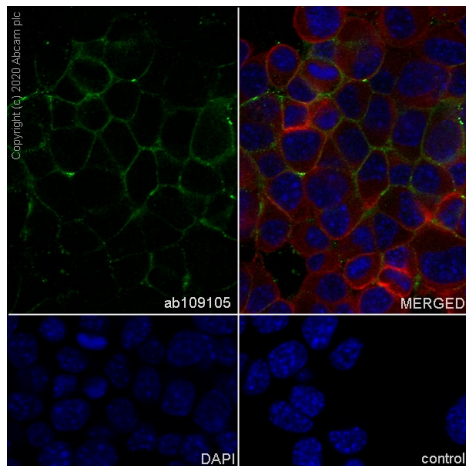
Anti-SNAP25 antibody [EPR3275] (ab109105) at 1/1000 dilution (Purified) + Human brain lysate

Secondary

Goat Anti-Rabbit IgG H&L (HRP) ([ab97051](#)) at 1/20000 dilution

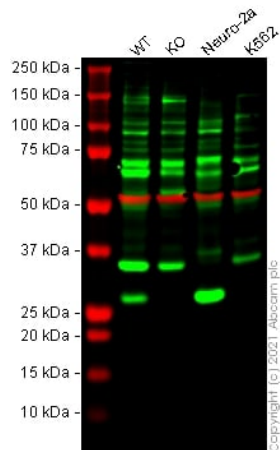
Predicted band size: 23 kDa

Observed band size: 25 kDa



Immunocytochemistry/ Immunofluorescence - Anti-SNAP25 antibody [EPR3275] (ab109105)

Immunocytochemistry analysis of Neuro-2a(Mouse neuroblastoma neuroblast) cells labeling SNAP25 with Purified ab109105 at 1/250 dilution (8.9 µg/mL). Cells were fixed in 4% Paraformaldehyde and permeabilized with 0.1% tritonX-100. Cells were counterstained with Ab195889 Anti-alpha Tubulin antibody [DM1A] - Microtubule Marker (Alexa Fluor® 594) 1/200 (2.5 µg/mL). Goat anti rabbit IgG (Alexa Fluor® 488, [ab150077](#)) was used as the secondary antibody at 1/1000 (2 µg/mL) dilution. DAPI (blue) was used as nuclear counterstain. PBS instead of the primary antibody was used as the secondary antibody only control.



Western blot - Anti-SNAP25 antibody [EPR3275]
(ab109105)

All lanes : Anti-SNAP25 antibody [EPR3275] (ab109105) at 1/1000 dilution

Lane 1 : Wild-type SH-SY5Y cell lysate

Lane 2 : SNAP25 knockout SH-SY5Y cell lysate

Lane 3 : Neuro-2a cell lysate

Lane 4 : K562 cell lysate

Lysates/proteins at 20 µg per lane.





Performed under reducing conditions.

Predicted band size: 23 kDa

Observed band size: 27 kDa

False colour image of Western blot: Anti-SNAP25 antibody [EPR3275] staining at 1/1000 dilution, shown in green; loading control **ab7291** (Mouse anti-Alpha Tubulin [DM1A]) staining at 1/20000 dilution, shown in red. In Western blot, ab109105 was shown to bind specifically to SNAP25. A band was observed at 27 kDa in wild-type SH-SY5Y cell lysates with no signal observed at this size in SNAP25 knockout cell line **ab280041** (knockout cell lysate **ab280100**). To generate this image, wild-type and SNAP25 knockout SH-SY5Y cell lysates were analysed. First, samples were run on an SDS-PAGE gel then transferred onto a nitrocellulose membrane. Membranes were blocked in 3 % milk in TBS-0.1 % Tween[®] 20 (TBS-T) before incubation with primary antibodies overnight at 4 °C. Blots were washed four times in TBS-T, incubated with secondary antibodies for 1 h at room temperature, washed again four times then imaged. Secondary antibodies used were Goat anti-Rabbit IgG H&L (IRDye[®] 800CW) preabsorbed (**ab216773**) and Goat anti-Mouse IgG H&L (IRDye[®] 680RD) preabsorbed (**ab216776**) at 1/20000 dilution.

Why choose a recombinant antibody?

 <p>Research with confidence Consistent and reproducible results</p>	 <p>Long-term and scalable supply Recombinant technology</p>
 <p>Success from the first experiment Confirmed specificity</p>	 <p>Ethical standards compliant Animal-free production</p>

Anti-SNAP25 antibody [EPR3275] (ab109105)

Please note: All products are "FOR RESEARCH USE ONLY. NOT FOR USE IN DIAGNOSTIC PROCEDURES"

Our Abpromise to you: Quality guaranteed and expert technical support

- Replacement or refund for products not performing as stated on the datasheet
- Valid for 12 months from date of delivery
- Response to your inquiry within 24 hours
- We provide support in Chinese, English, French, German, Japanese and Spanish
- Extensive multi-media technical resources to help you
- We investigate all quality concerns to ensure our products perform to the highest standards

If the product does not perform as described on this datasheet, we will offer a refund or replacement. For full details of the Abpromise, please visit <https://www.abcam.cn/abpromise> or contact our technical team.

Terms and conditions

- Guarantee only valid for products bought direct from Abcam or one of our authorized distributors