


# Anti-SNAIL + SLUG (phospho S246) antibody ab63568

★★★★☆ [1 Abreviews](#) [7 References](#) [3 图像](#)

### 概述

产品名称	Anti-SNAIL + SLUG (phospho S246)抗体
描述	兔多克隆抗体to SNAIL + SLUG (phospho S246)
宿主	Rabbit
特异性	ab63568 detects endogenous levels of SNAIL only when phosphorylated at serine 246.
经测试应用	适用于: WB, ICC/IF
种属反应性	与反应: Human, Recombinant fragment 预测可用于: Mouse 
免疫原	Synthetic peptide corresponding to Human SNAIL + SLUG (phospho S246). Database link: <a href="#">O95863</a>
阳性对照	H29 nuclear lysate HuvEc cells
常规说明	<p>The Life Science industry has been in the grips of a reproducibility crisis for a number of years. Abcam is leading the way in addressing this with our range of recombinant monoclonal antibodies and knockout edited cell lines for gold-standard validation. Please check that this product meets your needs before purchasing.</p> <p>If you have any questions, special requirements or concerns, please send us an inquiry and/or contact our Support team ahead of purchase. Recommended alternatives for this product can be found below, along with publications, customer reviews and Q&amp;As</p>

### 性能

形式	Liquid
存放说明	Shipped at 4°C. Store at -20°C. Stable for 12 months at -20°C.
存储溶液	pH: 7.40 Preservative: 0.02% Sodium azide Constituents: PBS, 50% Glycerol (glycerin, glycerine), 0.87% Sodium chloride
纯度	Immunogen affinity purified
纯化说明	Affinity-purified from rabbit antiserum by affinity-chromatography using epitope-specific phosphopeptide. The antibody against non-phosphopeptide was removed by chromatography using non-phosphopeptide corresponding to the phosphorylation site.
克隆	多克隆

## 应用

## The Abpromise guarantee

Abpromise™承诺保证使用ab63568于以下的经测试应用

“应用说明”部分 下显示的仅为推荐的起始稀释度;实际最佳的稀释度/浓度应由使用者检定。

应用	Ab评论	说明
WB		1/500 - 1/1000. Detects a band of approximately 26 kDa (predicted molecular weight: 29 kDa).
ICC/IF		1/500 - 1/1000.

## 靶标

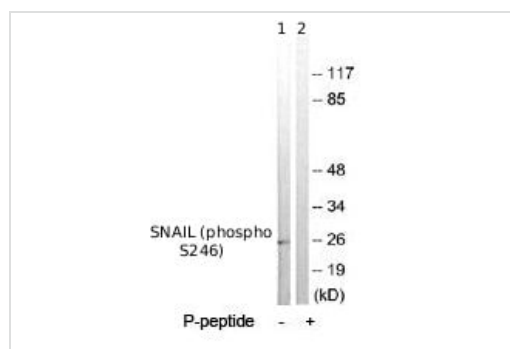
## 相关性

Function: SNAIL is involved in the epithelial to mesenchymal transition (EMT) and formation and maintenance of embryonic mesoderm (By similarity). Binds to 3 E-boxes of the E-cadherin gene promoter and represses its transcription. SLUG is a transcriptional repressor, involved in the generation and migration of neural crest cells. PTM: SNAIL is phosphorylated by GSK3B. Once phosphorylated, it becomes a target for BTRC ubiquitination. Ubiquitinated on Lys-98, Lys-137 and Lys-146 by FBXL14 and BTRC leading to degradation. BTRC-triggered ubiquitination requires previous GSK3B-mediated SNAI1 phosphorylation. Similarity: Both SNAIL and SLUG belong to the snail C2H2-type zinc-finger protein family. Tissue specificity: SNAIL is expressed in a variety of tissues with the highest expression in kidney. Expressed in mesenchymal and epithelial cell lines. SLUG is expressed in placenta and adult heart, pancreas, liver, kidney and skeletal muscle.

## 细胞定位

Slug is generally nuclear, while Snail is known to be both cytoplasmic and nuclear. Once phosphorylated (probably on Ser-107, Ser-111, Ser-115 and Ser-119) snail is exported from the nucleus to the cytoplasm where subsequent phosphorylation of the destruction motif and ubiquitination involving BTRC occurs.

## 图片



Western blot - Anti-SNAIL + SLUG (phospho S246) antibody (ab63568)

**All lanes :** Anti-SNAIL + SLUG (phospho S246) antibody (ab63568) at 1/500 dilution

**Lane 1 :** Extracts from HT29 cells (5-30µg), minus immunising peptide

**Lane 2 :** Extracts from HT29 cells (5-30µg) plus immunising peptide (5-10µg)

**Predicted band size:** 29 kDa

**Observed band size:** 26 kDa



Western blot - Anti-SNAIL + SLUG (phospho S246) antibody (ab63568)

**All lanes :** Anti-SNAIL + SLUG (phospho S246) antibody (ab63568) at 1/500 dilution

**Lane 1 :** SNAIL (SNAI1) Human Recombinant Protein

**Lane 2 :** SLUG (SNAI2) Human Recombinant Protein

Lysates/proteins at 0.1 µg per lane.

**Secondary**

**All lanes :** Goat Anti-Rabbit IgG H&L (HRP) preadsorbed (**ab97080**) at 1/5000 dilution

Developed using the ECL technique.

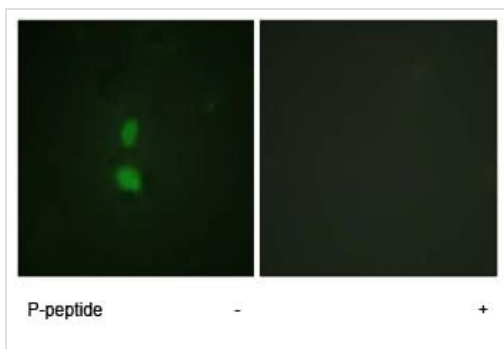
Performed under reducing conditions.

**Predicted band size:** 29 kDa

**Observed band size:** 68 kDa

**Exposure time:** 3 minutes

Ab63568 recognizes the tagged recombinant SLUG and SNAIL proteins which have an expected molecular weight of 68 kDa



Immunocytochemistry/ Immunofluorescence - Anti-SNAIL + SLUG (phospho S246) antibody (ab63568)

Immunofluorescent staining of HuvEc cells, using ab63568 at a 1/500 dilution, minus immunising peptide (left image) and plus immunising peptide (right image).

**Please note:** All products are "FOR RESEARCH USE ONLY. NOT FOR USE IN DIAGNOSTIC PROCEDURES"

**Our Abpromise to you: Quality guaranteed and expert technical support**

- Replacement or refund for products not performing as stated on the datasheet

- Valid for 12 months from date of delivery
- Response to your inquiry within 24 hours
  
- We provide support in Chinese, English, French, German, Japanese and Spanish
- Extensive multi-media technical resources to help you
- We investigate all quality concerns to ensure our products perform to the highest standards

If the product does not perform as described on this datasheet, we will offer a refund or replacement. For full details of the Abpromise, please visit <https://www.abcam.cn/abpromise> or contact our technical team.

### **Terms and conditions**

---

- Guarantee only valid for products bought direct from Abcam or one of our authorized distributors