

Anti-Smt3 antibody ab14405

★★★★★ [3 Abreviews](#) [9 References](#) [2 图像](#)

概述

| | |
|-------|---|
| 产品名称 | Anti-Smt3抗体 |
| 描述 | 兔多克隆抗体to Smt3 |
| 宿主 | Rabbit |
| 经测试应用 | 适用于: WB, ELISA |
| 种属反应性 | 与反应: <i>Saccharomyces cerevisiae</i> |
| 免疫原 | Recombinant protein (S. cerevisiae). |
| 阳性对照 | Most yeast cell lysates can be used as a positive control without induction or stimulation. |
| 常规说明 | <p>Centrifuge product if not completely clear after standing at room temperature.</p> <p>The Life Science industry has been in the grips of a reproducibility crisis for a number of years. Abcam is leading the way in addressing this with our range of recombinant monoclonal antibodies and knockout edited cell lines for gold-standard validation. Please check that this product meets your needs before purchasing.</p> <p>If you have any questions, special requirements or concerns, please send us an inquiry and/or contact our Support team ahead of purchase. Recommended alternatives for this product can be found below, along with publications, customer reviews and Q&As</p> |

性能

| | |
|------|---|
| 形式 | Liquid |
| 存放说明 | Shipped at 4°C. Store at +4°C short term (1-2 weeks). Upon delivery aliquot. Store at -20°C or -80°C. Avoid freeze / thaw cycle. |
| 存储溶液 | <p>pH: 6.50</p> <p>Preservative: 0.01% Sodium azide</p> <p>Constituents: 0.42% Potassium phosphate, 0.87% Sodium chloride</p> |
| 纯度 | IgG fraction |
| 纯化说明 | This product is an IgG fraction antibody purified from monospecific antiserum by a multi-step process which includes delipidation, salt fractionation and ion exchange chromatography followed by extensive dialysis. Assay by immunoelectrophoresis resulted in a single precipitin arc against anti-Rabbit serum. |
| 克隆 | 多克隆 |
| 同种型 | IgG |

应用

The Abpromise guarantee **Abpromise™**承诺保证使用ab14405于以下的经测试应用

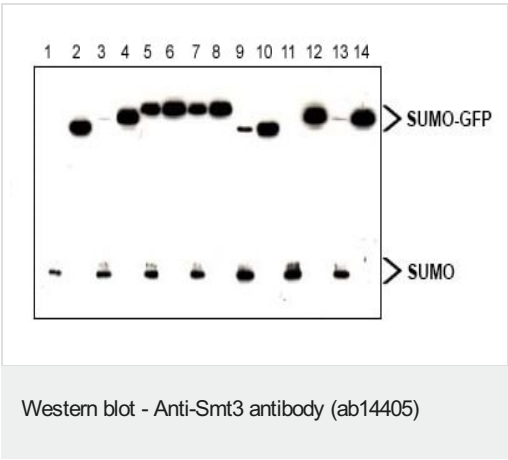
“应用说明”部分 下显示的仅为推荐的起始稀释度;实际最佳的稀释度/浓度应由使用者检定。

| 应用 | Ab评论 | 说明 |
|-------|-----------|---|
| WB | ★★★★★ (2) | 1/1000. Detects a band of approximately 12 kDa. Note: Although not tested, this antibody is likely functional in Immunohistochemistry and Immunoprecipitation. |
| ELISA | ★★★★★ (1) | 1/1000 - 1/5000. |

靶标

| | |
|-------|---|
| 功能 | Not known; suppressor of MIF2 mutations. |
| 序列相似性 | Belongs to the ubiquitin family. SUMO subfamily. Contains 1 ubiquitin-like domain. |

图片



All lanes : Anti-Smt3 antibody (ab14405) at 1/1000 dilution

Lanes 1 & 3 & 5 & 7 & 9 & 11 & 13 : Lysate prepared from E.coli expressed Yeast SUMO protein and SUMO-GFP fusion protein after incubation with lysed insect cells

Lanes 2 & 4 & 6 & 8 & 10 & 12 & 14 : Lysate prepared from SUMO-GFP fusion protein after incubation with lysed insect cells in the presence of 2% SDS

Lysates/proteins at 2 µg per lane.

Western blot of SUMO-GFP fusion proteins cleaved by insect cell protein extracts. Anti-SUMO antibody, generated by immunization with recombinant yeast SUMO, was tested by western blot against several constructs of SUMO-GFP fusion proteins after cleavage by proteases in insect cell protein extracts. These constructs contained various linkers between the SUMO and GFP portion of the fusion proteins.



ab14405 detecting Smt3 in Escherichia coli recombinant protein (BL21(DE3)) by Direct ELISA. Wells were coated with 10µg each of diluted control protein (without SUMO fusion - Negative Controls) and target protein (with SUMO fusion protein) in bicarbonate buffer. Wells were blocked with 5% milk for 1 hour at room temperature. The samples were incubated with primary antibody (1/5000 in TBST +5% milk) for 45 minutes. An HRP-conjugated goat polyclonal to rabbit IgG (1/40000) was used as the secondary antibody.

Please note: All products are "FOR RESEARCH USE ONLY. NOT FOR USE IN DIAGNOSTIC PROCEDURES"

Our Abpromise to you: Quality guaranteed and expert technical support

- Replacement or refund for products not performing as stated on the datasheet
- Valid for 12 months from date of delivery
- Response to your inquiry within 24 hours
- We provide support in Chinese, English, French, German, Japanese and Spanish
- Extensive multi-media technical resources to help you
- We investigate all quality concerns to ensure our products perform to the highest standards

If the product does not perform as described on this datasheet, we will offer a refund or replacement. For full details of the Abpromise, please visit <https://www.abcam.cn/abpromise> or contact our technical team.

Terms and conditions

- Guarantee only valid for products bought direct from Abcam or one of our authorized distributors