


# Anti-Smoothelin antibody ab74379

## 1 图像

### 概述

产品名称	Anti-Smoothelin抗体
描述	兔多克隆抗体to Smoothelin
宿主	Rabbit
经测试应用	适用于: WB
种属反应性	与反应: Human 预测可用于: Mouse, Rat, Horse, Cow, Dog, Pig, Orangutan 
免疫原	Synthetic peptide corresponding to Human Smoothelin aa 1-100 conjugated to keyhole limpet haemocyanin. (Peptide available as <a href="#">ab74378</a> )
阳性对照	This antibody gave a positive signal in the following Human lysates: Liver Tissue, Jurkat Whole Cell, SK N SH Whole Cell, Brain Tissue
常规说明	<p>The Life Science industry has been in the grips of a reproducibility crisis for a number of years. Abcam is leading the way in addressing this with our range of recombinant monoclonal antibodies and knockout edited cell lines for gold-standard validation. Please check that this product meets your needs before purchasing.</p> <p>If you have any questions, special requirements or concerns, please send us an inquiry and/or contact our Support team ahead of purchase. Recommended alternatives for this product can be found below, along with publications, customer reviews and Q&amp;As</p>

### 性能

形式	Liquid
存放说明	Shipped at 4°C. Store at +4°C short term (1-2 weeks). Upon delivery aliquot. Store at -20°C or -80°C. Avoid freeze / thaw cycle.
存储溶液	pH: 7.40 Preservative: 0.02% Sodium azide Constituent: PBS
	Batches of this product that have a concentration < 1mg/ml may have BSA added as a stabilising agent. If you would like information about the formulation of a specific lot, please contact our scientific support team who will be happy to help.

纯度	Immunogen affinity purified
克隆	多克隆
同种型	IgG

应用

The Abpromise guarantee      **Abpromise™**承诺保证使用ab74379于以下的经测试应用

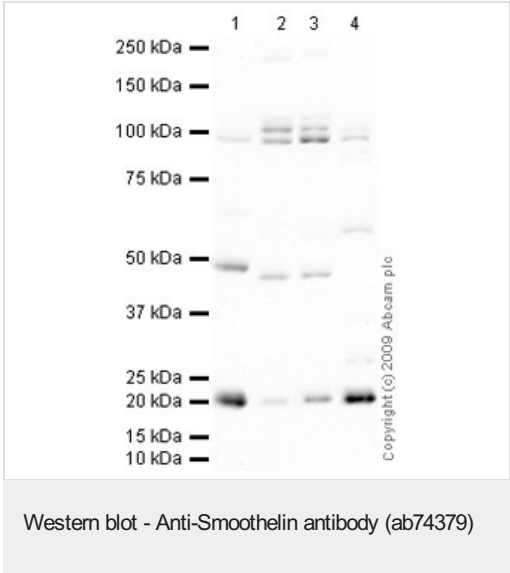
“应用说明”部分 下显示的仅为推荐的起始稀释度;实际最佳的稀释度/浓度应由使用者检定。

应用	Ab评论	说明
WB		Use a concentration of 1 µg/ml. Detects a band of approximately 95, 100 kDa (predicted molecular weight: 100 kDa).

靶标

功能	Structural protein of the cytoskeleton.
组织特异性	Smooth muscle; contractile or vascular (for the long form).
序列相似性	Belongs to the smoothelin family. Contains 1 CH (calponin-homology) domain.
细胞定位	Cytoplasm > cytoskeleton. Exhibits a filamentous organization.

图片



**All lanes :** Anti-Smoothelin antibody (ab74379) at 1 µg/ml

- Lane 1 :** Human liver tissue lysate - total protein ([ab29889](#))
- Lane 2 :** Jurkat (Human T cell lymphoblast-like cell line) Whole Cell Lysate
- Lane 3 :** SK N SH (Human neuroblastoma) Whole Cell Lysate
- Lane 4 :** Human brain tissue lysate - total protein ([ab29466](#))

Lysates/proteins at 10 µg per lane.

Secondary

**All lanes :** Goat polyclonal to Rabbit IgG - H&L - Pre-Adsorbed (HRP) at 1/3000 dilution

Developed using the ECL technique.

Performed under reducing conditions.

**Predicted band size:** 100 kDa

**Observed band size:** 100,95 kDa

**Additional bands at:** 20 kDa, 45 kDa, 56 kDa. We are unsure as to the identity of these extra bands.

**Exposure time:** 8 minutes

This antibody was raised against an immunogen that is predicted to cross react with all isoforms of Smoothelin, with exception to Isoform A (Short).

**Please note:** All products are "FOR RESEARCH USE ONLY. NOT FOR USE IN DIAGNOSTIC PROCEDURES"

### **Our Abpromise to you: Quality guaranteed and expert technical support**

---

- Replacement or refund for products not performing as stated on the datasheet
- Valid for 12 months from date of delivery
- Response to your inquiry within 24 hours
- We provide support in Chinese, English, French, German, Japanese and Spanish
- Extensive multi-media technical resources to help you
- We investigate all quality concerns to ensure our products perform to the highest standards

If the product does not perform as described on this datasheet, we will offer a refund or replacement. For full details of the Abpromise, please visit <https://www.abcam.cn/abpromise> or contact our technical team.

### **Terms and conditions**

---

- Guarantee only valid for products bought direct from Abcam or one of our authorized distributors