

Anti-smooth muscle Myosin heavy chain 11 antibody [EPR5335] ab124679

重组 RabMAb

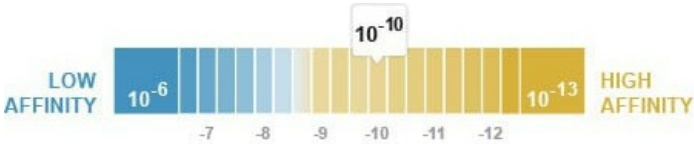
10 References 9 图像

概述

产品名称	Anti-smooth muscle Myosin heavy chain 11抗体[EPR5335]
描述	兔单克隆抗体[EPR5335] to smooth muscle Myosin heavy chain 11
宿主	Rabbit
经测试应用	适用于: WB, IHC-P
种属反应性	与反应: Mouse, Human
免疫原	Synthetic peptide. This information is proprietary to Abcam and/or its suppliers.
阳性对照	WB: Human fetal artery, bladder and mouse spleen lysates IHC: Human colon and kidney tissues
常规说明	<p>This product is a recombinant monoclonal antibody, which offers several advantages including:</p> <ul style="list-style-type: none">- High batch-to-batch consistency and reproducibility- Improved sensitivity and specificity- Long-term security of supply- Animal-free production <p>For more information see here.</p> <p>Our RabMAb[®] technology is a patented hybridoma-based technology for making rabbit monoclonal antibodies. For details on our patents, please refer to RabMAb[®] patents.</p> <p>Rat: We have preliminary internal testing data to indicate this antibody may not react with this species. Please contact us for more information.</p>

性能

形式	Liquid
存放说明	Shipped at 4°C. Store at +4°C short term (1-2 weeks). Upon delivery aliquot. Store at -20°C. Stable for 12 months at -20°C.
解离常数 (K _D)	K _D = 1.85 x 10 ⁻¹⁰ M



[Learn more about K_D](#)

存储溶液	pH: 7.2 Preservative: 0.01% Sodium azide Constituents: 40% Glycerol (glycerin, glycerine), 0.05% BSA, 59% PBS
纯度	Protein A purified
克隆	单克隆
克隆编号	EPR5335
同种型	IgG

应用

The Abpromise guarantee **Abpromise™** 承诺保证使用ab124679于以下的经测试应用

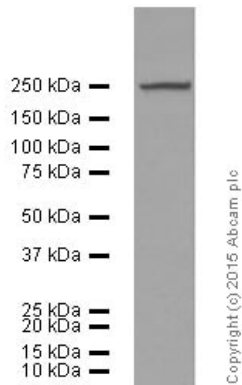
“应用说明”部分 下显示的仅为推荐的起始稀释度;实际最佳的稀释度/浓度应由使用者检定。

应用	Ab评论	说明
WB		1/10000 - 1/50000. Detects a band of approximately 250 kDa (predicted molecular weight: 227 kDa).
IHC-P		1/100 - 1/500. Perform heat mediated antigen retrieval before commencing with IHC staining protocol. See IHC antigen retrieval protocols .

靶标

功能	Muscle contraction.
组织特异性	Smooth muscle; expressed in the umbilical artery, bladder, esophagus and trachea.
疾病相关	Note=A chromosomal aberration involving MYH11 is found in acute myeloid leukemia of M4EO subtype. Pericentric inversion inv(16)(p13;q22). The inversion produces a fusion protein consisting of the 165 N-terminal residues of CBF-beta (PEPB2) and the tail region of MYH11. Defects in MYH11 are the cause of aortic aneurysm familial thoracic type 4 (AAT4) [MIM:132900]; also known as familial thoracic aortic aneurysm and dissection (TAAD). Aneurysms and dissections of the aorta usually result from degenerative changes in the aortic wall. Thoracic aortic aneurysms and dissections are primarily associated with a characteristic histologic appearance known as 'medial necrosis' or 'Erdheim cystic medial necrosis' in which there is degeneration and fragmentation of elastic fibers, loss of smooth muscle cells, and an accumulation of basophilic ground substance. Patients with AAT4 show marked aortic stiffness. Pathological aortas show large areas of medial degeneration with very low smooth muscle cells content.
序列相似性	Contains 1 IQ domain. Contains 1 myosin head-like domain.
结构域	The rodlike tail sequence is highly repetitive, showing cycles of a 28-residue repeat pattern composed of 4 heptapeptides, characteristic for alpha-helical coiled coils. Each myosin heavy chain can be split into 1 light meromyosin (LMM) and 1 heavy meromyosin (HMM). It can later be split further into 2 globular subfragments (S1) and 1 rod-shaped subfragment (S2).
细胞定位	Melanosome. Identified by mass spectrometry in melanosome fractions from stage I to stage IV.

图片



Western blot - Anti-smooth muscle Myosin heavy chain 11 antibody [EPR5335] (ab124679)

Anti-smooth muscle Myosin heavy chain 11 antibody [EPR5335] (ab124679) at 1/20000 dilution (purified) + mouse spleen at 20 µg

Secondary

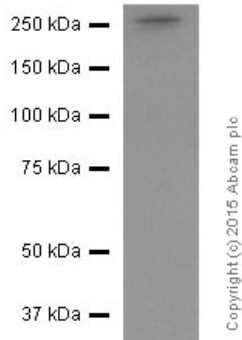
HRP goat anti-rabbit IgG (H+L) at 1/1000 dilution

Predicted band size: 227 kDa

Observed band size: 250 kDa

Blocking buffer: 5% NFDM/TBST

Dilution buffer: 5% NFDM/TBST



Western blot - Anti-smooth muscle Myosin heavy chain 11 antibody [EPR5335] (ab124679)

Anti-smooth muscle Myosin heavy chain 11 antibody [EPR5335] (ab124679) at 1/50000 dilution (purified) + human fetal artery lysate at 10 µg

Secondary

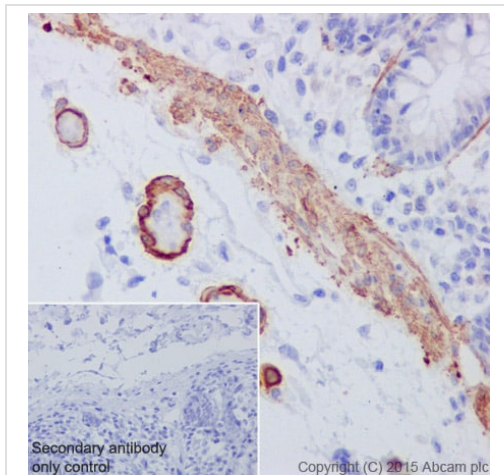
HRP goat anti-rabbit IgG (H+L) at 1/50000 dilution

Predicted band size: 227 kDa

Observed band size: 250 kDa

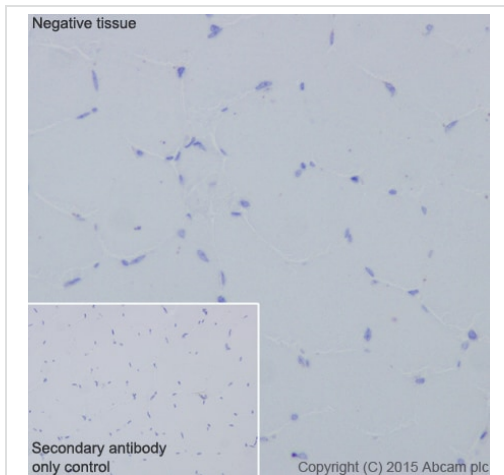
Blocking buffer: 5% NFDM/TBST

Dilution buffer: 5% NFDM/TBST



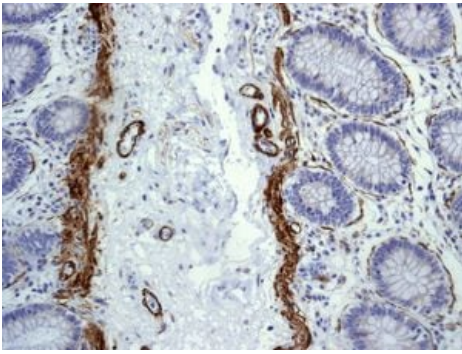
Immunohistochemistry (Formalin/PFA-fixed paraffin-embedded sections) - Anti-smooth muscle Myosin heavy chain 11 antibody [EPR5335] (ab124679)

Immunohistochemical staining of paraffin embedded human smooth muscle with purified ab124679 at a working dilution of 1/500. The secondary antibody used is HRP goat anti-rabbit IgG H&L ([ab97051](#)) at 1/500. The sample is counter-stained with hematoxylin. Antigen retrieval was performed using Tris-EDTA buffer, pH 9.0. PBS was used instead of the primary antibody as the negative control, and is shown in the inset.



Immunohistochemistry (Formalin/PFA-fixed paraffin-embedded sections) - Anti-smooth muscle Myosin heavy chain 11 antibody [EPR5335] (ab124679)

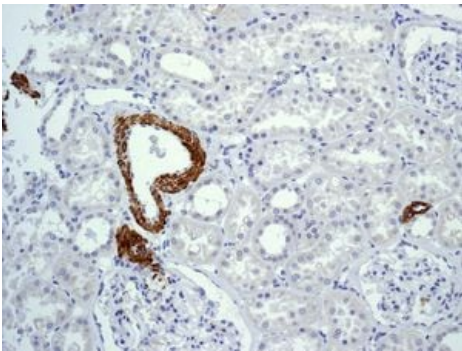
Immunohistochemical staining of paraffin embedded human skeletal muscle with purified ab124679 at a working dilution of 1/500. The secondary antibody used is HRP goat anti-rabbit IgG H&L ([ab97051](#)) at 1/500. The sample is counter-stained with hematoxylin. Antigen retrieval was performed using Tris-EDTA buffer, pH 9.0. PBS was used instead of the primary antibody as the negative control, and is shown in the inset.



Immunohistochemistry (Formalin/PFA-fixed paraffin-embedded sections) - Anti-smooth muscle Myosin heavy chain 11 antibody [EPR5335] (ab124679)

Unpurified ab124679, at 1/100 dilution, staining smooth muscle Myosin heavy chain 11 in paraffin-embedded Human colon tissue by Immunohistochemistry.

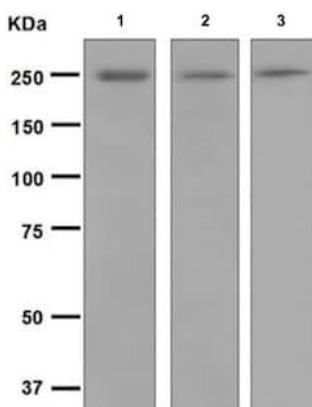
Perform heat mediated antigen retrieval before commencing with IHC staining protocol.



Immunohistochemistry (Formalin/PFA-fixed paraffin-embedded sections) - Anti-smooth muscle Myosin heavy chain 11 antibody [EPR5335] (ab124679)

Unpurified ab124679, at 1/100 dilution, staining smooth muscle Myosin heavy chain 11 in paraffin-embedded Human kidney tissue by Immunohistochemistry.

Perform heat mediated antigen retrieval before commencing with IHC staining protocol.



Western blot - Anti-smooth muscle Myosin heavy chain 11 antibody [EPR5335] (ab124679)

All lanes : Anti-smooth muscle Myosin heavy chain 11 antibody [EPR5335] (ab124679) at 1/10000 dilution (unpurified)

Lane 1 : Human fetal artery lysate

Lane 2 : Human bladder lysate

Lane 3 : Mouse spleen lysate

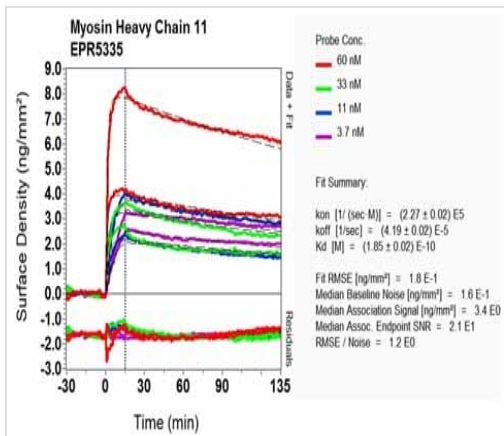
Lysates/proteins at 10 µg per lane.

Secondary

All lanes : Goat anti-Rabbit HRP at 1/2000 dilution

Predicted band size: 227 kDa

Observed band size: 250 kDa



SPR Scanning - Anti-smooth muscle Myosin heavy chain 11 antibody [EPR5335] (ab124679)

Equilibrium dissociation constant (K_D)

Learn more about K_D

[Click here to learn more about \$K_D\$](#)

Why choose a recombinant antibody?



Research with confidence
Consistent and reproducible results



Long-term and scalable supply
Recombinant technology



Success from the first experiment
Confirmed specificity



Ethical standards compliant
Animal-free production

Anti-smooth muscle Myosin heavy chain 11 antibody [EPR5335] (ab124679)

Please note: All products are "FOR RESEARCH USE ONLY. NOT FOR USE IN DIAGNOSTIC PROCEDURES"

Our Abpromise to you: Quality guaranteed and expert technical support

- Replacement or refund for products not performing as stated on the datasheet
- Valid for 12 months from date of delivery
- Response to your inquiry within 24 hours
- We provide support in Chinese, English, French, German, Japanese and Spanish
- Extensive multi-media technical resources to help you
- We investigate all quality concerns to ensure our products perform to the highest standards

If the product does not perform as described on this datasheet, we will offer a refund or replacement. For full details of the Abpromise, please visit <https://www.abcam.cn/abpromise> or contact our technical team.

Terms and conditions

- Guarantee only valid for products bought direct from Abcam or one of our authorized distributors