

Anti-SMARCC1/BAF155 antibody ab72503

[2 References](#) [3 图像](#)

概述

产品名称	Anti-SMARCC1/BAF155抗体
描述	兔多克隆抗体to SMARCC1/BAF155
宿主	Rabbit
经测试应用	适用于: ICC/IF, WB, IP
种属反应性	与反应: Human 预测可用于: Horse, Dog, Chimpanzee, Rhesus monkey, Gorilla, Orangutan, Elephant 
免疫原	Synthetic peptide corresponding to Human SMARCC1/BAF155 (C terminal). Database link: NP_003065.2
阳性对照	HeLa whole cell lysate (ab150035).
常规说明	<p>The Life Science industry has been in the grips of a reproducibility crisis for a number of years. Abcam is leading the way in addressing this with our range of recombinant monoclonal antibodies and knockout edited cell lines for gold-standard validation. Please check that this product meets your needs before purchasing.</p> <p>If you have any questions, special requirements or concerns, please send us an inquiry and/or contact our Support team ahead of purchase. Recommended alternatives for this product can be found below, along with publications, customer reviews and Q&As</p>

性能

形式	Liquid
存放说明	Shipped at 4°C. Upon delivery aliquot and store at -20°C. Avoid freeze / thaw cycles.
存储溶液	pH: 6.8 Preservative: 0.09% Sodium azide Constituents: 0.1% BSA, Tris buffered saline
纯度	Immunogen affinity purified
纯化说明	ab72503 was affinity purified using an epitope specific to SMARCC1/BAF155 immobilized on solid support.
克隆	多克隆
同种型	IgG

应用

The Abpromise guarantee **Abpromise™**承诺保证使用ab72503于以下的经测试应用

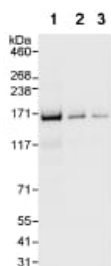
“应用说明”部分 下显示的仅为推荐的起始稀释度;实际最佳的稀释度/浓度应由使用者检定。

应用	Ab评论	说明
ICC/IF		Use a concentration of 5 µg/ml.
WB		1/2000 - 1/10000. Detects a band of approximately 160 kDa (predicted molecular weight: 123 kDa).
IP		Use at 2-5 µg/mg of lysate.

靶标

功能	<p>Involved in transcriptional activation and repression of select genes by chromatin remodeling (alteration of DNA-nucleosome topology). May stimulate the ATPase activity of the catalytic subunit of the complex. Also involved in vitamin D-coupled transcription regulation via its association with the WINAC complex, a chromatin-remodeling complex recruited by vitamin D receptor (VDR), which is required for the ligand-bound VDR-mediated transrepression of the CYP27B1 gene. Belongs to the neural progenitors-specific chromatin remodeling complex (npBAF complex) and the neuron-specific chromatin remodeling complex (nBAF complex). During neural development a switch from a stem/progenitor to a post-mitotic chromatin remodeling mechanism occurs as neurons exit the cell cycle and become committed to their adult state. The transition from proliferating neural stem/progenitor cells to post-mitotic neurons requires a switch in subunit composition of the npBAF and nBAF complexes. As neural progenitors exit mitosis and differentiate into neurons, npBAF complexes which contain ACTL6A/BAF53A and PHF10/BAF45A, are exchanged for homologous alternative ACTL6B/BAF53B and DPF1/BAF45B or DPF3/BAF45C subunits in neuron-specific complexes (nBAF). The npBAF complex is essential for the self-renewal/proliferative capacity of the multipotent neural stem cells. The nBAF complex along with CREST plays a role regulating the activity of genes essential for dendrite growth.</p>
组织特异性	Expressed in brain, heart, muscle, placenta, lung, liver, muscle, kidney and pancreas.
序列相似性	Belongs to the SMARCC family. Contains 1 SANT domain. Contains 1 SWIRM domain.
翻译后修饰	Phosphorylated on undefined residues at the G2/M transition by ERK1 and other kinases. This may contribute to cell cycle specific inactivation of remodeling complexes containing the phosphorylated protein.
细胞定位	Nucleus.

图片



Western blot - Anti-SMARCC1/BAF155 antibody (ab72503)

All lanes : Anti-SMARCC1/BAF155 antibody (ab72503) at 0.04 µg/ml

Lane 1 : HeLa whole cell lysate at 50 µg

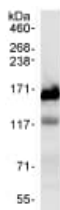
Lane 2 : HeLa whole cell lysate at 15 µg

Lane 3 : HeLa whole cell lysate at 5 µg

Predicted band size: 123 kDa

Observed band size: 160 kDa

Exposure time: 1 second

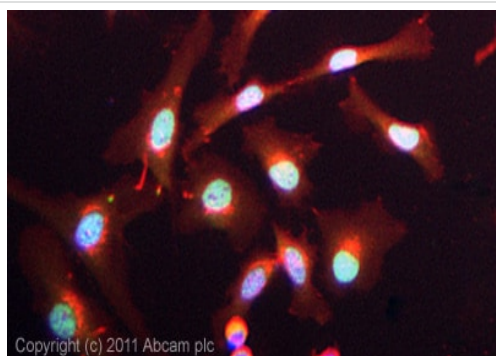


Immunoprecipitation - Anti-SMARCC1/BAF155 antibody (ab72503)

Detection of SMARCC1/BAF155 by Western Blot of Immunoprecipitate.

ab72503 at 1µg/ml staining SMARCC1/BAF155 in HeLa whole cell lysate immunoprecipitated using ab72503 at 3µg/mg lysate (1 mg/IP; 20% of IP loaded/lane).

Detection: Chemiluminescence with exposure time of 1 second.



Immunocytochemistry/ Immunofluorescence - Anti-SMARCC1/BAF155 antibody (ab72503)

ICC/IF image of ab72503 stained HeLa cells. The cells were 100% methanol fixed (5 min) and then incubated in 1%BSA / 10% normal goat serum / 0.3M glycine in 0.1% PBS-Tween for 1h to permeabilise the cells and block non-specific protein-protein interactions. The cells were then incubated with the antibody (ab72503, 5µg/ml) overnight at +4°C. The secondary antibody (green) was **ab96899**, DyLight® 488 goat anti-rabbit IgG (H+L) used at a 1/250 dilution for 1h. Alexa Fluor® 594 WGA was used to label plasma membranes (red) at a 1/200 dilution for 1h. DAPI was used to stain the cell nuclei (blue) at a concentration of 1.43µM.

Please note: All products are "FOR RESEARCH USE ONLY. NOT FOR USE IN DIAGNOSTIC PROCEDURES"

Our Abpromise to you: Quality guaranteed and expert technical support

- Replacement or refund for products not performing as stated on the datasheet

- Valid for 12 months from date of delivery
- Response to your inquiry within 24 hours

- We provide support in Chinese, English, French, German, Japanese and Spanish
- Extensive multi-media technical resources to help you
- We investigate all quality concerns to ensure our products perform to the highest standards

If the product does not perform as described on this datasheet, we will offer a refund or replacement. For full details of the Abpromise, please visit <https://www.abcam.cn/abpromise> or contact our technical team.

Terms and conditions

- Guarantee only valid for products bought direct from Abcam or one of our authorized distributors