

Anti-SMAP2 antibody ab121675

4 图像

概述

产品名称	Anti-SMAP2抗体
描述	兔多克隆抗体to SMAP2
宿主	Rabbit
经测试应用	适用于: IHC-P, ICC/IF, WB
种属反应性	与反应: Mouse, Rat, Human
免疫原	antigen sequence, corresponding to C terminal amino acids 326-429 of Human SMAP2.
阳性对照	Human lymph node tissue; A431 cells; RT 4, U 251 MG, Human Liver and Tonsil cell lysates.
常规说明	<p>The Life Science industry has been in the grips of a reproducibility crisis for a number of years. Abcam is leading the way in addressing this with our range of recombinant monoclonal antibodies and knockout edited cell lines for gold-standard validation. Please check that this product meets your needs before purchasing.</p> <p>If you have any questions, special requirements or concerns, please send us an inquiry and/or contact our Support team ahead of purchase. Recommended alternatives for this product can be found below, along with publications, customer reviews and Q&As</p>

性能

形式	Liquid
存放说明	Shipped at 4°C. Upon delivery aliquot and store at -20°C. Avoid freeze / thaw cycles.
存储溶液	<p>pH: 7.20</p> <p>Preservative: 0.02% Sodium azide</p> <p>Constituents: 59% PBS, 40% Glycerol (glycerin, glycerine)</p>
纯度	Immunogen affinity purified
克隆	多克隆
同种型	IgG

应用

The Abpromise guarantee

Abpromise™承诺保证使用ab121675于以下的经测试应用

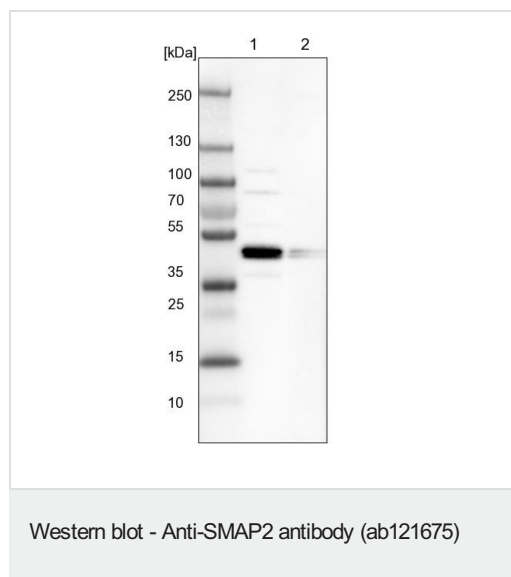
“应用说明”部分 下显示的仅为推荐的起始稀释度;实际最佳的稀释度/浓度应由使用者检定。

应用	Ab评论	说明
IHC-P		1/200 - 1/500. Perform heat mediated antigen retrieval with citrate buffer pH 6 before commencing with IHC staining protocol.
ICC/IF		Use a concentration of 1 - 4 µg/ml. Fixation/Permeabilization: PFA/Triton X-100
WB		Use a concentration of 0.04 - 0.4 µg/ml.

靶标

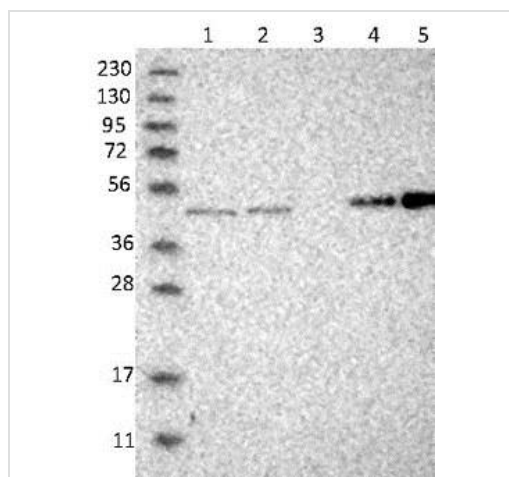
功能	GTPase activating protein that acts on ARF1. Can also activate ARF6 (in vitro). May play a role in clathrin-dependent retrograde transport from early endosomes to the trans-Golgi network.
序列相似性	Contains 1 Arf-GAP domain.
细胞定位	Cytoplasm. Detected in multiple foci throughout the cytoplasm and in juxtanuclear structures.

图片



Lane 1: NIH-3T3 cell lysate (Mouse embryonic fibroblast cells)

Lane 2: NBT-II cell lysate (Rat Wistar bladder tumour cells)



Western blot - Anti-SMAP2 antibody (ab121675)

All lanes : Anti-SMAP2 antibody (ab121675) at 1/250 dilution

Lane 1 : RT 4 lysate

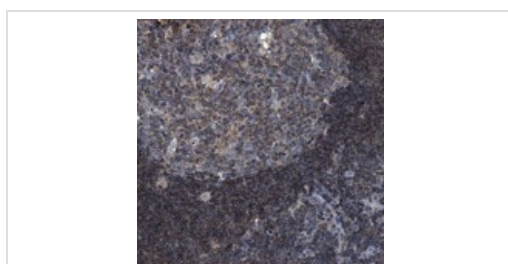
Lane 2 : U 251 MG lysate

Lane 3 : Human plasma lysate

Lane 4 : Human Liver lysate

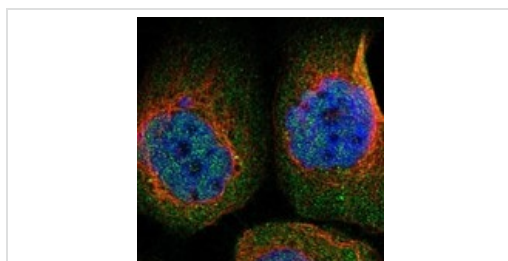
Lane 5 : Human tonsil lysate

Developed using the ECL technique.



Immunohistochemistry (Formalin/PFA-fixed paraffin-embedded sections) - Anti-SMAP2 antibody (ab121675)

ab121675 at 1/300 dilution staining SMAP2 in Paraffin-embedded Human lymph node tissue by Immunohistochemistry.



Immunocytochemistry/ Immunofluorescence - Anti-SMAP2 antibody (ab121675)

ab121675 at 4 µg/ml staining SMAP2 in PFA/Triton X-100 fixed/permeabilized A431 cells by Immunofluorescence (green).

Please note: All products are "FOR RESEARCH USE ONLY. NOT FOR USE IN DIAGNOSTIC PROCEDURES"

Our Abpromise to you: Quality guaranteed and expert technical support

- Replacement or refund for products not performing as stated on the datasheet
- Valid for 12 months from date of delivery
- Response to your inquiry within 24 hours
- We provide support in Chinese, English, French, German, Japanese and Spanish

- Extensive multi-media technical resources to help you
- We investigate all quality concerns to ensure our products perform to the highest standards

If the product does not perform as described on this datasheet, we will offer a refund or replacement. For full details of the Abpromise, please visit <https://www.abcam.cn/abpromise> or contact our technical team.

Terms and conditions

- Guarantee only valid for products bought direct from Abcam or one of our authorized distributors