


### Anti-Sly1 antibody ab86594

#### 2 图像

#### 概述

产品名称	Anti-Sly1 抗体
描述	兔多克隆抗体 to Sly1
宿主	Rabbit
经测试应用	适用于: WB, IP
种属反应性	与反应: Mouse, Human 预测可用于: Rat, Rabbit, Horse, Cow, Dog, Pig, Chimpanzee, Ferret, Rhesus monkey, Gorilla, Orangutan, Elephant 
免疫原	Synthetic peptide corresponding to Human Sly1 aa 300-350 (internal sequence). Sequence: VENSPAGARPKRKNNKSYDLTPVDKFWQKHKGSPFPEVAESV QQELESYR A

Database link: [NP\\_057190.2](#)

 [Run BLAST with](#)

 [Run BLAST with](#)

阳性对照 Whole cell lysate from HeLa cells, 293T cells or NIH3T3 cells.

#### 常规说明

The Life Science industry has been in the grips of a reproducibility crisis for a number of years. Abcam is leading the way in addressing this with our range of recombinant monoclonal antibodies and knockout edited cell lines for gold-standard validation. Please check that this product meets your needs before purchasing.

If you have any questions, special requirements or concerns, please send us an inquiry and/or contact our Support team ahead of purchase. Recommended alternatives for this product can be found below, along with publications, customer reviews and Q&As

#### 性能

形式	Liquid
存放说明	Shipped at 4°C. Upon delivery aliquot and store at -20°C. Avoid freeze / thaw cycles.
存储溶液	pH: 6.8 Preservative: 0.09% Sodium azide Constituents: 0.1% BSA, Tris buffered saline
纯度	Immunogen affinity purified

克隆 多克隆  
同种型 IgG

## 应用

**The Abpromise guarantee**      **Abpromise™**承诺保证使用ab86594于以下的经测试应用

“应用说明”部分 下显示的仅为推荐的起始稀释度;实际最佳的稀释度/浓度应由使用者检定。

应用	Ab评论	说明
WB		1/2000 - 1/10000. Predicted molecular weight: 72 kDa.
IP		Use at 2-5 µg/mg of lysate.

## 靶标

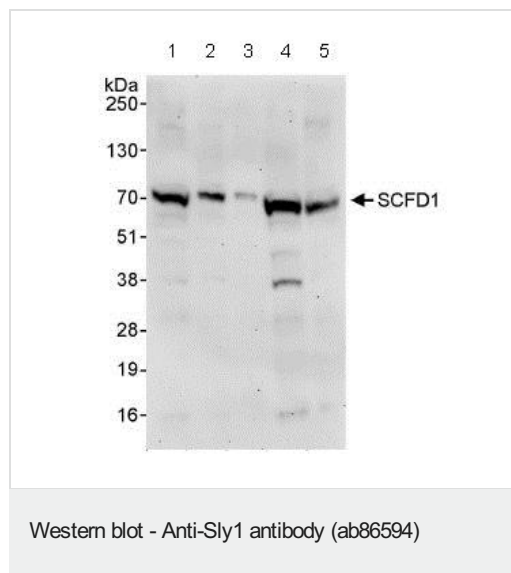
**功能**      Plays a role in SNARE-pin assembly and Golgi-to-ER retrograde transport via its interaction with COG4. Involved in vesicular transport between the endoplasmic reticulum and the Golgi.

**序列相似性**      Belongs to the STXBP/unc-18/SEC1 family.

**翻译后修饰**      Phosphorylated upon DNA damage, probably by ATM or ATR.

**细胞定位**      Cytoplasm. Endoplasmic reticulum membrane. Golgi apparatus > Golgi stack membrane.

## 图片



**All lanes :** Anti-Sly1 antibody (ab86594) at 0.04 µg/ml

**Lane 1 :** Whole cell lysate from HeLa cells at 50 µg

**Lane 2 :** Whole cell lysate from HeLa cells at 15 µg

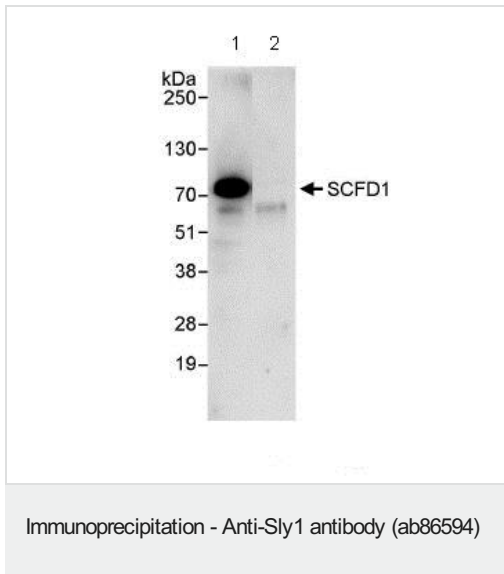
**Lane 3 :** Whole cell lysate from HeLa cells at 5 µg

**Lane 4 :** Whole cell lysate from 293T cells at 50 µg

**Lane 5 :** Whole cell lysate from NIH3T3 cells at 50 µg

**Predicted band size:** 72 kDa

**Exposure time:** 3 minutes



1mg whole cell lysate from HeLa cells was immunoprecipitated using 3ug ab86594. 20% of IP was loaded per lane, and probed with **ab86549** at 1ug/ml (lane 1) or with a control IgG (lane 2).  
Detection: chemiluminescence with an exposure time of 30 seconds.

**Please note:** All products are "FOR RESEARCH USE ONLY. NOT FOR USE IN DIAGNOSTIC PROCEDURES"

### Our Abpromise to you: Quality guaranteed and expert technical support

---

- Replacement or refund for products not performing as stated on the datasheet
- Valid for 12 months from date of delivery
- Response to your inquiry within 24 hours
- We provide support in Chinese, English, French, German, Japanese and Spanish
- Extensive multi-media technical resources to help you
- We investigate all quality concerns to ensure our products perform to the highest standards

If the product does not perform as described on this datasheet, we will offer a refund or replacement. For full details of the Abpromise, please visit <https://www.abcam.cn/abpromise> or contact our technical team.

### Terms and conditions

---

- Guarantee only valid for products bought direct from Abcam or one of our authorized distributors