


Anti-SLK antibody ab70230

1 References **1 图像**

概述

产品名称	Anti-SLK抗体
描述	兔多克隆抗体to SLK
宿主	Rabbit
经测试应用	适用于: WB, IP
种属反应性	与反应: Human 预测可用于: Mouse, Rat, Rabbit, Horse, Guinea pig, Pig, Chimpanzee, Ferret, Rhesus monkey, Gorilla, Orangutan 
免疫原	Synthetic peptide corresponding to Human SLK aa 1-100. Database link: Q9H2G2
阳性对照	HeLa, and 293T whole cell lysate.
常规说明	<p>The Life Science industry has been in the grips of a reproducibility crisis for a number of years. Abcam is leading the way in addressing this with our range of recombinant monoclonal antibodies and knockout edited cell lines for gold-standard validation. Please check that this product meets your needs before purchasing.</p> <p>If you have any questions, special requirements or concerns, please send us an inquiry and/or contact our Support team ahead of purchase. Recommended alternatives for this product can be found below, along with publications, customer reviews and Q&As</p>

性能

形式	Liquid
存放说明	Shipped at 4°C. Upon delivery aliquot and store at -20°C. Avoid freeze / thaw cycles.
存储溶液	pH: 7 Preservative: 0.09% Sodium azide Constituents: 1.815% Tris, 1.764% Sodium citrate, 0.021% PBS
纯度	Immunogen affinity purified
克隆	多克隆
同种型	IgG

应用

The Abpromise guarantee

Abpromise™ 承诺保证使用ab70230于以下的经测试应用

“应用说明”部分 下显示的仅为推荐的起始稀释度;实际最佳的稀释度/浓度应由使用者检定。

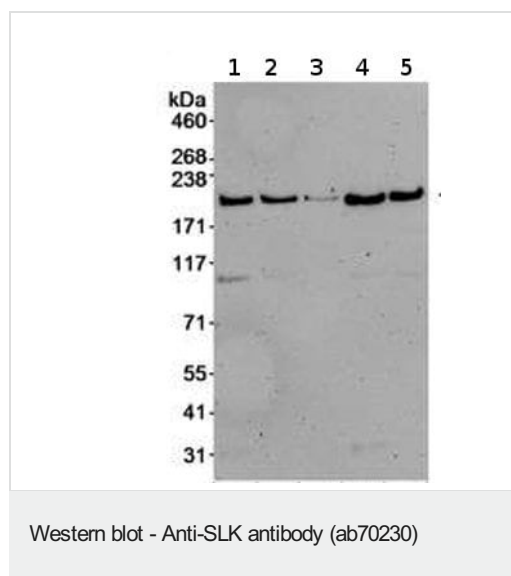
应用	Ab评论	说明
WB		1/500 - 1/5000. Detects a band of approximately 200 kDa (predicted molecular weight: 143 kDa).
IP		Use at 2-5 µg/mg of lysate.

靶标

相关性 SLK is a serine/threonine protein kinase that is involved in cytoskeletal reorganization and apoptosis. SLK is a microtubule-associated protein inducing actin stress fiber disassembly, it also mediates apoptosis and it is ubiquitously expressed; highest expression is found in heart and in skeletal muscle. There are two named isoforms.

细胞定位 Cytoplasmic

图片



All lanes : Anti-SLK antibody (ab70230) at 1 µg/ml

Lane 1 : MCF7 whole cell lysate at 50 µg

Lane 2 : MCF7 whole cell lysate at 15 µg

Lane 3 : MCF7 whole cell lysate at 5 µg

Lane 4 : HeLa whole cell lysate at 15 µg

Lane 5 : 293T whole cell lysate at 15 µg

Predicted band size: 143 kDa

Observed band size: 200 kDa

Please note: All products are "FOR RESEARCH USE ONLY. NOT FOR USE IN DIAGNOSTIC PROCEDURES"

Our Abpromise to you: Quality guaranteed and expert technical support

- Replacement or refund for products not performing as stated on the datasheet
- Valid for 12 months from date of delivery
- Response to your inquiry within 24 hours
- We provide support in Chinese, English, French, German, Japanese and Spanish
- Extensive multi-media technical resources to help you

- We investigate all quality concerns to ensure our products perform to the highest standards

If the product does not perform as described on this datasheet, we will offer a refund or replacement. For full details of the Abpromise, please visit <https://www.abcam.cn/abpromise> or contact our technical team.

Terms and conditions

- Guarantee only valid for products bought direct from Abcam or one of our authorized distributors