


Anti-SLITRK6 antibody ab67312

[1 References](#) [2 图像](#)

概述

产品名称	Anti-SLITRK6抗体
描述	兔多克隆抗体to SLITRK6
宿主	Rabbit
特异性	This antibody is predicted to have no cross-reactivity to other Slitrk proteins.
经测试应用	适用于: ICC/IF, WB
种属反应性	与反应: Human 预测可用于: Mouse, Rat 
免疫原	Synthetic peptide corresponding to Human SLITRK6 (C terminal). The immunogen is located within amino acids 720 - 770 (16 amino acid synthetic peptide) of Slitrk6. Database link: Q9H5Y7
阳性对照	SK-N-SH cell lysate.
常规说明	<p>The Life Science industry has been in the grips of a reproducibility crisis for a number of years. Abcam is leading the way in addressing this with our range of recombinant monoclonal antibodies and knockout edited cell lines for gold-standard validation. Please check that this product meets your needs before purchasing.</p> <p>If you have any questions, special requirements or concerns, please send us an inquiry and/or contact our Support team ahead of purchase. Recommended alternatives for this product can be found below, along with publications, customer reviews and Q&As</p>

性能

形式	Liquid
存放说明	Shipped at 4°C. Store at +4°C.
存储溶液	pH: 7.2 Preservative: 0.02% Sodium azide Constituent: PBS
纯度	Immunogen affinity purified
克隆	多克隆
同种型	IgG

应用

The Abpromise guarantee **Abpromise™**承诺保证使用ab67312于以下的经测试应用

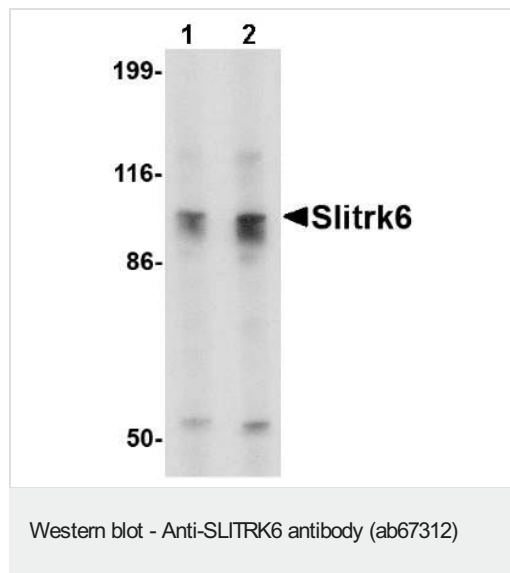
“应用说明”部分 下显示的仅为推荐的起始稀释度;实际最佳的稀释度/浓度应由使用者检定。

应用	Ab评论	说明
ICC/IF		Use a concentration of 20 µg/ml.
WB		Use a concentration of 0.5 - 1 µg/ml. Detects a band of approximately 95 kDa (predicted molecular weight: 95 kDa).

靶标

功能	Suppresses neurite outgrowth.
组织特异性	In adult brain, highly expressed in putamen with no expression in cerebral cortex. Expressed in adult and fetal lung and fetal liver. Also expressed at high levels in some brain tumors including medulloblastomas and primitive neuroectodermal tumors.
序列相似性	Belongs to the SLITRK family. Contains 11 LRR (leucine-rich) repeats. Contains 2 LRRCT domains. Contains 2 LRRNT domains.
细胞定位	Membrane.

图片



Lane 1 : Anti-SLITRK6 antibody (ab67312) at 0.5 µg/ml

Lane 2 : Anti-SLITRK6 antibody (ab67312) at 1 µg/ml

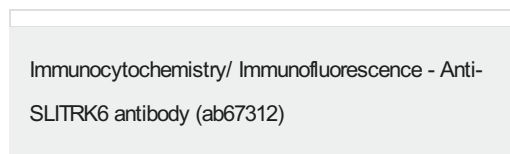
All lanes : SK-N-SH cell lysate

Lysates/proteins at 15 µg per lane.

Predicted band size: 95 kDa

Observed band size: 95 kDa

Additional bands at: 55 kDa. We are unsure as to the identity of these extra bands.



Immunofluorescence of Slitrk6 in Human Brain cells using ab67312 at 20 µg/ml.

Please note: All products are "FOR RESEARCH USE ONLY. NOT FOR USE IN DIAGNOSTIC PROCEDURES"

Our Abpromise to you: Quality guaranteed and expert technical support

- Replacement or refund for products not performing as stated on the datasheet
- Valid for 12 months from date of delivery
- Response to your inquiry within 24 hours

- We provide support in Chinese, English, French, German, Japanese and Spanish
- Extensive multi-media technical resources to help you
- We investigate all quality concerns to ensure our products perform to the highest standards

If the product does not perform as described on this datasheet, we will offer a refund or replacement. For full details of the Abpromise, please visit <https://www.abcam.cn/abpromise> or contact our technical team.

Terms and conditions

- Guarantee only valid for products bought direct from Abcam or one of our authorized distributors