

Anti-SLITRK5 antibody ab67309

[1 References](#) [1 图像](#)

概述

产品名称	Anti-SLITRK5抗体
描述	兔多克隆抗体to SLITRK5
宿主	Rabbit
特异性	ab67309 is predicted to have no cross-reactivity to other SLITRK proteins.
经测试应用	适用于: WB
种属反应性	与反应: Mouse
免疫原	Synthetic peptide. This information is proprietary to Abcam and/or its suppliers.
阳性对照	WB: 3T3 cell lysate.
常规说明	<p>The Life Science industry has been in the grips of a reproducibility crisis for a number of years. Abcam is leading the way in addressing this with our range of recombinant monoclonal antibodies and knockout edited cell lines for gold-standard validation. Please check that this product meets your needs before purchasing.</p> <p>If you have any questions, special requirements or concerns, please send us an inquiry and/or contact our Support team ahead of purchase. Recommended alternatives for this product can be found below, along with publications, customer reviews and Q&As</p>

性能

形式	Liquid
存放说明	Shipped at 4°C. Store at +4°C.
存储溶液	pH: 7.2 Preservative: 0.02% Sodium azide Constituent: PBS
纯度	Immunogen affinity purified
克隆	多克隆
同种型	IgG

应用

The Abpromise guarantee

Abpromise™ 承诺保证使用ab67309于以下的经测试应用

“应用说明”部分 下显示的仅为推荐的起始稀释度;实际最佳的稀释度/浓度应由使用者检定。

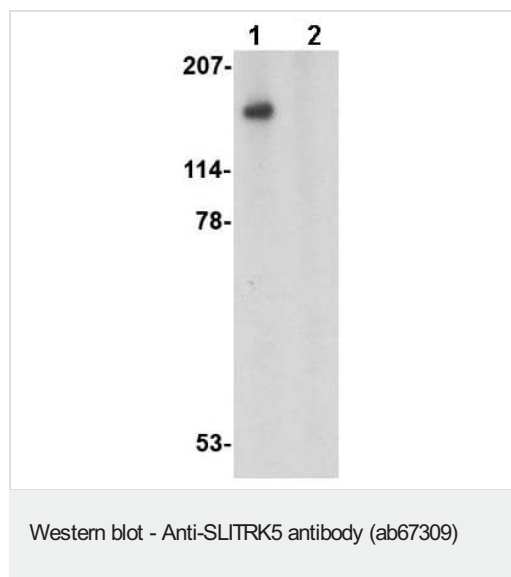
应用	Ab评论	说明
WB		Use a concentration of 0.5 - 1 µg/ml. Detects a band of approximately 160 kDa (predicted molecular weight: 107 kDa).

靶标

相关性 SLIT and NTRK-like family 5 (SLITRK5) is a member a protein family consisting of six homologous transmembrane proteins (SLITRK1-6) that share two conserved leucine-rich repeat domains in the extracellular domain and have significant homology to Slit, a secreted axonal growth-controlling protein. These proteins are also homologous to trk neurotrophin receptors in their intracellular domains. Expression of SLITRK proteins is highly restricted to neural and brain tumor tissues, but varies within the protein family. Like every other SLITRK protein except SLITRK1, overexpression of SLITRK5 inhibited neurite outgrowth in cultured neurons, suggesting that these proteins are involved in the control of neurite outgrowth.

细胞定位 Membrane; Single-pass type I membrane protein.

图片



All lanes : Anti-SLITRK5 antibody (ab67309) at 1 µg/ml

Lane 1 : 3T3 cell lysate with no blocking peptide

Lane 2 : 3T3 cell lysate with blocking peptide

Lysates/proteins at 15 µg per lane.

Predicted band size: 107 kDa

Observed band size: 160 kDa

Please note: All products are "FOR RESEARCH USE ONLY. NOT FOR USE IN DIAGNOSTIC PROCEDURES"

Our Abpromise to you: Quality guaranteed and expert technical support

- Replacement or refund for products not performing as stated on the datasheet
- Valid for 12 months from date of delivery
- Response to your inquiry within 24 hours
- We provide support in Chinese, English, French, German, Japanese and Spanish
- Extensive multi-media technical resources to help you

- We investigate all quality concerns to ensure our products perform to the highest standards

If the product does not perform as described on this datasheet, we will offer a refund or replacement. For full details of the Abpromise, please visit <https://www.abcam.cn/abpromise> or contact our technical team.

Terms and conditions

- Guarantee only valid for products bought direct from Abcam or one of our authorized distributors