

### Anti-SLFN12 antibody ab113238

#### 3 图像

#### 概述

产品名称	Anti-SLFN12抗体
描述	兔多克隆抗体to SLFN12
宿主	Rabbit
经测试应用	适用于: WB, IHC-P
种属反应性	与反应: Human
免疫原	Synthetic peptide from near the C-terminal region of Human SLFN12.
阳性对照	Human prostate and colon tissue; SK N SH cell lysate.
常规说明	<p>The Life Science industry has been in the grips of a reproducibility crisis for a number of years. Abcam is leading the way in addressing this with our range of recombinant monoclonal antibodies and knockout edited cell lines for gold-standard validation. Please check that this product meets your needs before purchasing.</p> <p>If you have any questions, special requirements or concerns, please send us an inquiry and/or contact our Support team ahead of purchase. Recommended alternatives for this product can be found below, along with publications, customer reviews and Q&amp;As</p>

#### 性能

形式	Liquid
存放说明	Shipped at 4°C. Store at +4°C short term (1-2 weeks). Store at -20°C or -80°C. Avoid freeze / thaw cycle.
存储溶液	<p>pH: 7.4</p> <p>Preservative: 0.02% Sodium azide</p> <p>Constituent: 99.98% PBS</p>
纯度	Protein A purified
克隆	多克隆
同种型	IgG

#### 应用

The Abpromise guarantee

**Abpromise™** 承诺保证使用ab113238于以下的经测试应用

“应用说明”部分 下显示的仅为推荐的起始稀释度;实际最佳的稀释度/浓度应由使用者检定。

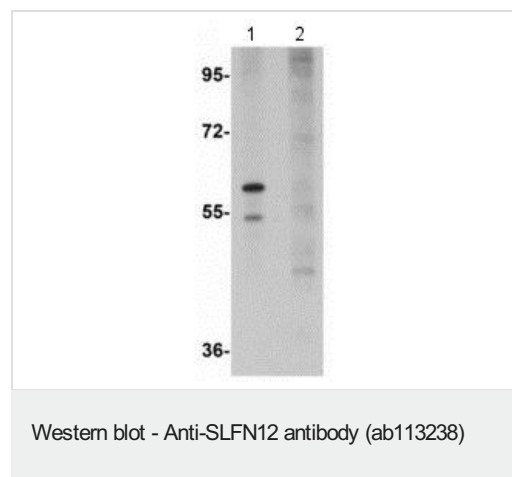
应用	Ab评论	说明
WB		Use a concentration of 1 - 2 µg/ml. Predicted molecular weight: 67 kDa.
IHC-P		Use a concentration of 2.5 - 5 µg/ml.

## 靶标

### 序列相似性

Belongs to the Schlafen family.

## 图片



**All lanes :** Anti-SLFN12 antibody (ab113238) at 1 µg/ml

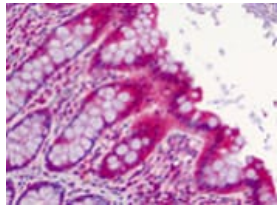
**Lane 1 :** SK N SH cell lysate

**Lane 2 :** SK N SH cell lysate with blocking peptide

**Predicted band size:** 67 kDa



ab113238 at 5ug/ml staining SLFN12 in Formalin-fixed, Paraffin-embedded Human prostate tissue by Immunohistochemistry.



ab113238 at 5ug/ml staining SLFN12 in Formalin-fixed, Paraffin-embedded Human colon tissue by Immunohistochemistry.

Immunohistochemistry (Formalin/PFA-fixed paraffin-embedded sections) - Anti-SLFN12 antibody (ab113238)

**Please note:** All products are "FOR RESEARCH USE ONLY. NOT FOR USE IN DIAGNOSTIC PROCEDURES"

### Our Abpromise to you: Quality guaranteed and expert technical support

---

- Replacement or refund for products not performing as stated on the datasheet
- Valid for 12 months from date of delivery
- Response to your inquiry within 24 hours
- We provide support in Chinese, English, French, German, Japanese and Spanish
- Extensive multi-media technical resources to help you
- We investigate all quality concerns to ensure our products perform to the highest standards

If the product does not perform as described on this datasheet, we will offer a refund or replacement. For full details of the Abpromise, please visit <https://www.abcam.cn/abpromise> or contact our technical team.

### Terms and conditions

---

- Guarantee only valid for products bought direct from Abcam or one of our authorized distributors