


Anti-SLC5A3 antibody ab113245

[3 References](#) [3 图像](#)

概述

产品名称	Anti-SLC5A3抗体
描述	兔多克隆抗体to SLC5A3
宿主	Rabbit
经测试应用	适用于: WB, IHC-P
种属反应性	与反应: Human 预测可用于: Mouse, Rat 
免疫原	Synthetic peptide within Human SLC5A3 aa 221-270 (internal sequence) conjugated to keyhole limpet haemocyanin. The exact sequence is proprietary. Database link: P53794
阳性对照	Human prostate and Human uterus tissue and extracts from HUVEC cells
常规说明	<p>The Life Science industry has been in the grips of a reproducibility crisis for a number of years. Abcam is leading the way in addressing this with our range of recombinant monoclonal antibodies and knockout edited cell lines for gold-standard validation. Please check that this product meets your needs before purchasing.</p> <p>If you have any questions, special requirements or concerns, please send us an inquiry and/or contact our Support team ahead of purchase. Recommended alternatives for this product can be found below, along with publications, customer reviews and Q&As</p>

性能

形式	Liquid
存放说明	Shipped at 4°C. Store at -20°C. Stable for 12 months at -20°C.
存储溶液	pH: 7.40 Preservative: 0.02% Sodium azide Constituents: 0.88% Sodium chloride, 50% Glycerol (glycerin, glycerine), 48% PBS
纯度	Immunogen affinity purified
克隆	多克隆
同种型	IgG

应用

The Abpromise guarantee

Abpromise™ 承诺保证使用 ab113245 于以下的经测试应用

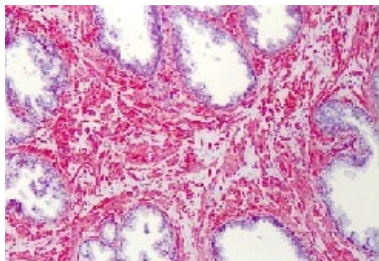
“应用说明”部分 下显示的仅为推荐的起始稀释度;实际最佳的稀释度/浓度应由使用者检定。

应用	Ab评论	说明
WB		1/500 - 1/1000. Predicted molecular weight: 80 kDa.
IHC-P		Use a concentration of 5 µg/ml.

靶标

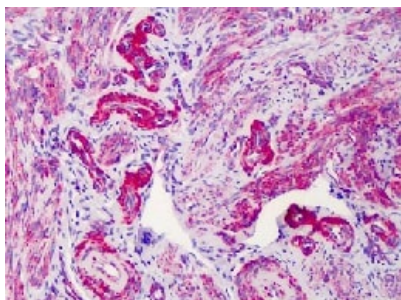
功能	Prevents intracellular accumulation of high concentrations of myo-inositol (an osmolyte) that result in impairment of cellular function.
序列相似性	Belongs to the sodium:solute symporter (SSF) (TC 2.A.21) family.
细胞定位	Membrane.

图片



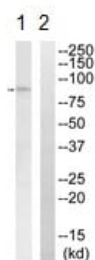
ab113245, at 5 µg/ml, staining SLC5A3 in formalin fixed, paraffin embedded Human prostate tissue.

Immunohistochemistry (Formalin/PFA-fixed paraffin-embedded sections) - Anti-SLC5A3 antibody (ab113245)



ab113245, at 5 µg/ml, staining SLC5A3 in formalin fixed, paraffin embedded Human uterus tissue.

Immunohistochemistry (Formalin/PFA-fixed paraffin-embedded sections) - Anti-SLC5A3 antibody (ab113245)



Western blot - Anti-SLC5A3 antibody (ab113245)

All lanes : Anti-SLC5A3 antibody (ab113245) at 1/500 dilution

Lane 1 : HUVEC cell extract

Lane 2 : HUVEC cell extract with synthetic peptide

Predicted band size: 80 kDa

Please note: All products are "FOR RESEARCH USE ONLY. NOT FOR USE IN DIAGNOSTIC PROCEDURES"

Our Abpromise to you: Quality guaranteed and expert technical support

- Replacement or refund for products not performing as stated on the datasheet
- Valid for 12 months from date of delivery
- Response to your inquiry within 24 hours
- We provide support in Chinese, English, French, German, Japanese and Spanish
- Extensive multi-media technical resources to help you
- We investigate all quality concerns to ensure our products perform to the highest standards

If the product does not perform as described on this datasheet, we will offer a refund or replacement. For full details of the Abpromise, please visit <https://www.abcam.cn/abpromise> or contact our technical team.

Terms and conditions

- Guarantee only valid for products bought direct from Abcam or one of our authorized distributors