

Anti-SLC4A7/NBCn1 antibody ab82335

8 References [2 图像](#)

概述

| | |
|-------|---|
| 产品名称 | Anti-SLC4A7/NBCn1抗体 |
| 描述 | 兔多克隆抗体to SLC4A7/NBCn1 |
| 宿主 | Rabbit |
| 经测试应用 | 适用于: WB, IHC-P |
| 种属反应性 | 与反应: Human |
| 免疫原 | Synthetic peptide corresponding to Human SLC4A7/NBCn1 aa 1150 to the C-terminus (C terminal) conjugated to keyhole limpet haemocyanin. (Peptide available as ab96634) |
| 阳性对照 | This antibody gave a positive signal in the following whole cell lysates: Caco2 and HEK293. |
| 常规说明 | <p>The Life Science industry has been in the grips of a reproducibility crisis for a number of years. Abcam is leading the way in addressing this with our range of recombinant monoclonal antibodies and knockout edited cell lines for gold-standard validation. Please check that this product meets your needs before purchasing.</p> <p>If you have any questions, special requirements or concerns, please send us an inquiry and/or contact our Support team ahead of purchase. Recommended alternatives for this product can be found below, along with publications, customer reviews and Q&As</p> |

性能

| | |
|------|--|
| 形式 | Liquid |
| 存放说明 | Shipped at 4°C. Store at +4°C short term (1-2 weeks). Upon delivery aliquot. Store at -20°C or -80°C. Avoid freeze / thaw cycle. |
| 存储溶液 | pH: 7.40 Preservative: 0.02% Sodium azide Constituent: PBS |
| 纯度 | Batches of this product that have a concentration < 1mg/ml may have BSA added as a stabilising agent. If you would like information about the formulation of a specific lot, please contact our scientific support team who will be happy to help. |
| 克隆 | Immunogen affinity purified 多克隆 |

应用

The Abpromise guarantee **Abpromise™**承诺保证使用ab82335于以下的经测试应用

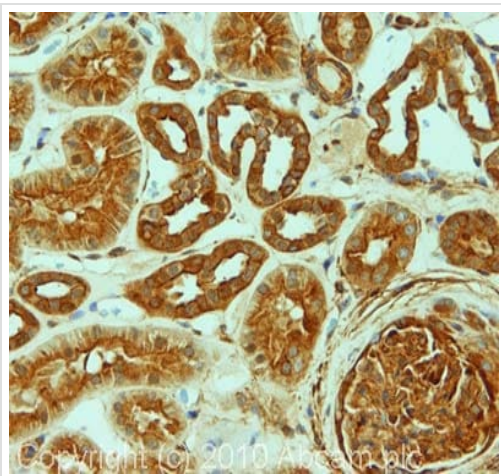
“应用说明”部分下显示的仅为推荐的起始稀释度;实际最佳的稀释度/浓度应由使用者检定。

| 应用 | Ab评论 | 说明 |
|-------|------|---|
| WB | | Use a concentration of 1 µg/ml. Detects a band of approximately 136 kDa (predicted molecular weight: 136 kDa). |
| IHC-P | | Use a concentration of 5 µg/ml. Perform heat mediated antigen retrieval before commencing with IHC staining protocol. |

靶标

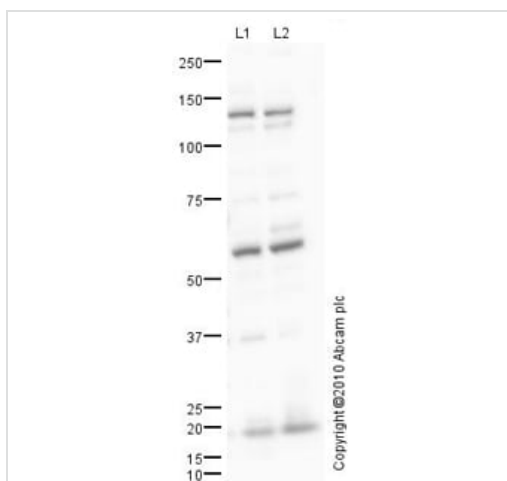
| | |
|--------------|--|
| 功能 | Electroneutral sodium- and bicarbonate-dependent cotransporter with a Na(+):HCO ₃ (-) 1:1 stoichiometry. Regulates intracellular pH and may play a role in bicarbonate salvage in secretory epithelia. May also have an associated sodium channel activity. |
| 组织特异性 | Highly expressed in testis and spleen. Also expressed in retina, colon, small intestine, ovary, thymus, prostate, muscle, heart and kidney. Isoform 1 is expressed in skeletal muscle and heart muscle. |
| 序列相似性 | Belongs to the anion exchanger (TC 2.A.31) family. |
| 结构域 | The PDZ-binding motif mediates interaction with the CFTR, SLC9A3R1/EBP50 complex and probably with USH1C. |
| 细胞定位 | Basolateral cell membrane. Apical cell membrane. Cell projection, stereocilium. Also described at the apical cell membrane. Localizes to the stereocilia of cochlear outer hair cells and to the lateral membrane of cochlear inner hair cells (By similarity). |

图片



Immunohistochemistry (Formalin/PFA-fixed paraffin-embedded sections) - Anti-SLC4A7/NBCn1 antibody (ab82335)

IHC image of SLC4A7/NBCn1 staining in human normal kidney formalin fixed paraffin embedded tissue section, performed on a Leica Bond™ system using the standard protocol F. The section was pre-treated using heat mediated antigen retrieval with sodium citrate buffer (pH6, epitope retrieval solution 1) for 20 mins. The section was then incubated with ab82335, 5µg/ml, for 15 mins at room temperature and detected using an HRP conjugated compact polymer system. DAB was used as the chromogen. The section was then counterstained with haematoxylin and mounted with DPX.



Western blot - Anti-SLC4A7/NBCn1 antibody (ab82335)

All lanes : Anti-SLC4A7/NBCn1 antibody (ab82335) at 1 µg/ml

Lane 1 : Caco 2 (Human colonic carcinoma cell line) Whole Cell Lysate

Lane 2 : HEK293 (Human embryonic kidney cell line) Whole Cell Lysate

Lysates/proteins at 10 µg per lane.

Secondary

All lanes : Goat polyclonal to Rabbit IgG - H&L - Pre-Adsorbed (HRP) at 10 µg

Developed using the ECL technique.

Performed under reducing conditions.

Predicted band size: 136 kDa

Observed band size: 136 kDa

Additional bands at: 19 kDa, 60 kDa. We are unsure as to the identity of these extra bands.

Exposure time: 30 seconds

Please note: All products are "FOR RESEARCH USE ONLY. NOT FOR USE IN DIAGNOSTIC PROCEDURES"

Our Abpromise to you: Quality guaranteed and expert technical support

- Replacement or refund for products not performing as stated on the datasheet
- Valid for 12 months from date of delivery
- Response to your inquiry within 24 hours

- We provide support in Chinese, English, French, German, Japanese and Spanish
- Extensive multi-media technical resources to help you
- We investigate all quality concerns to ensure our products perform to the highest standards

If the product does not perform as described on this datasheet, we will offer a refund or replacement. For full details of the Abpromise, please visit <https://www.abcam.cn/abpromise> or contact our technical team.

Terms and conditions

- Guarantee only valid for products bought direct from Abcam or one of our authorized distributors