


Anti-SLC40A1 antibody ab78066

★★★★★ [3 Abreviews](#) [23 References](#) [3 图像](#)

概述

产品名称	Anti-SLC40A1抗体
描述	兔多克隆抗体to SLC40A1
宿主	Rabbit
经测试应用	适用于: IHC-P
种属反应性	与反应: Human 预测可用于: Rat 
免疫原	Synthetic peptide corresponding to Human SLC40A1 (N terminal).
常规说明	<p>The Life Science industry has been in the grips of a reproducibility crisis for a number of years. Abcam is leading the way in addressing this with our range of recombinant monoclonal antibodies and knockout edited cell lines for gold-standard validation. Please check that this product meets your needs before purchasing.</p> <p>If you have any questions, special requirements or concerns, please send us an inquiry and/or contact our Support team ahead of purchase. Recommended alternatives for this product can be found below, along with publications, customer reviews and Q&As</p>

性能

形式	Liquid
存放说明	Shipped at 4°C. Upon delivery aliquot and store at -20°C. Avoid repeated freeze / thaw cycles.
存储溶液	Preservative: 0.01% Sodium azide Constituents: 50% Glycerol, PBS
纯度	Immunogen affinity purified
克隆	多克隆
同种型	IgG

应用

The Abpromise guarantee **Abpromise™** 承诺保证使用ab78066于以下的经测试应用

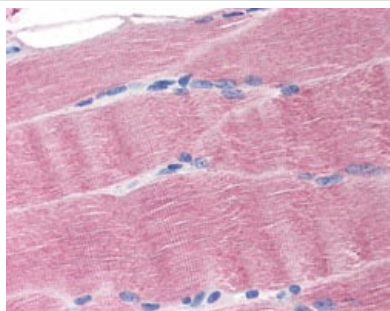
“应用说明”部分 下显示的仅为推荐的起始稀释度;实际最佳的稀释度/浓度应由使用者检定。

应用	Ab评论	说明
IHC-P	★★★★★ (2)	Use a concentration of 20 µg/ml. Perform heat mediated antigen retrieval with citrate buffer pH 6 before commencing with IHC staining protocol.

靶标

功能	May be involved in iron export from duodenal epithelial cell and also in transfer of iron between maternal and fetal circulation. Mediates iron efflux in the presence of a ferroxidase (hephaestin and/or ceruloplasmin).
组织特异性	Expressed in placenta, intestine, muscle and spleen.
疾病相关	Defects in SLC40A1 are the cause of hemochromatosis type 4 (HFE4) [MIM:606069]. HFE4 is an autosomal dominant iron-loading disorder characterized by early iron accumulation in reticuloendothelial cells and a marked increase in serum ferritin before elevation of the transferrin saturation.
序列相似性	Belongs to the SLC40A transporter family.
细胞定位	Cell membrane. Localized to the basolateral membrane of polarized epithelial cells.

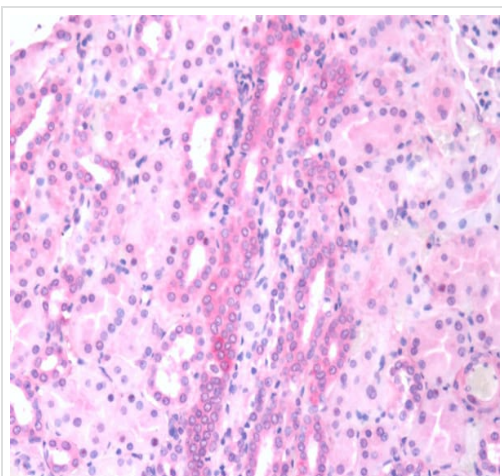
图片



Immunohistochemistry (Formalin/PFA-fixed paraffin-embedded sections) - Anti-SLC40A1 antibody (ab78066)

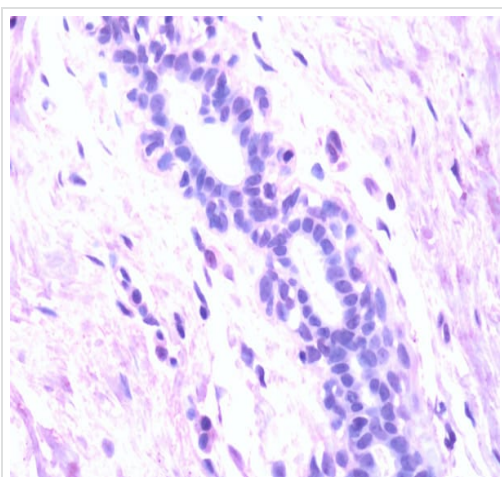
ab78066, at 20µg/ml, staining SLC40A1 in human skeletal muscle by Immunohistochemistry using formalin-fixed, paraffin-embedded tissue.

A heat induced antigen retrieval step was performed using pH 6.0 citrate buffer. After incubation with the primary antibody, slides were incubated with biotinylated secondary antibody, followed by alkaline phosphatase-streptavidin and chromogen.



Immunohistochemical staining of paraffin embedded, formalin fixed, kidney renal tubular epithelium using ab78066 at 20 µg/mL.

Immunohistochemistry (Formalin/PFA-fixed paraffin-embedded sections) - Anti-SLC40A1 antibody (ab78066)



Negative control - immunohistochemical staining of paraffin embedded, formalin fixed, breast epithelium using ab78066 at 20 µg/mL.

Immunohistochemistry (Formalin/PFA-fixed paraffin-embedded sections) - Anti-SLC40A1 antibody (ab78066)

Please note: All products are "FOR RESEARCH USE ONLY. NOT FOR USE IN DIAGNOSTIC PROCEDURES"

Our Abpromise to you: Quality guaranteed and expert technical support

- Replacement or refund for products not performing as stated on the datasheet
- Valid for 12 months from date of delivery
- Response to your inquiry within 24 hours

- We provide support in Chinese, English, French, German, Japanese and Spanish
- Extensive multi-media technical resources to help you
- We investigate all quality concerns to ensure our products perform to the highest standards

If the product does not perform as described on this datasheet, we will offer a refund or replacement. For full details of the Abpromise, please visit <https://www.abcam.cn/abpromise> or contact our technical team.

Terms and conditions

- Guarantee only valid for products bought direct from Abcam or one of our authorized distributors