

Anti-SLC39A14/ZIP-14 antibody ab106568

5 References [4 图像](#)

概述

产品名称	Anti-SLC39A14/ZIP-14抗体
描述	兔多克隆抗体to SLC39A14/ZIP-14
宿主	Rabbit
特异性	At least three isoforms of SLC39A14/ZIP-14 are known to exist; this antibody will detect all isoforms.
经测试应用	适用于: WB, IHC-P
种属反应性	与反应: Mouse, Human
免疫原	Synthetic peptide. This information is proprietary to Abcam and/or its suppliers.
阳性对照	WB: Human spleen tissue lysate. IHC-P: Mouse liver tissue.
常规说明	<p>The Life Science industry has been in the grips of a reproducibility crisis for a number of years. Abcam is leading the way in addressing this with our range of recombinant monoclonal antibodies and knockout edited cell lines for gold-standard validation. Please check that this product meets your needs before purchasing.</p> <p>If you have any questions, special requirements or concerns, please send us an inquiry and/or contact our Support team ahead of purchase. Recommended alternatives for this product can be found below, along with publications, customer reviews and Q&As</p>

性能

形式	Liquid
存放说明	Shipped at 4°C. Store at 4°C (stable for up to 12 months).
存储溶液	<p>pH: 7.2</p> <p>Preservative: 0.02% Sodium azide</p> <p>Constituent: PBS</p>
纯度	Immunogen affinity purified
克隆	多克隆
同种型	IgG

应用

The Abpromise guarantee

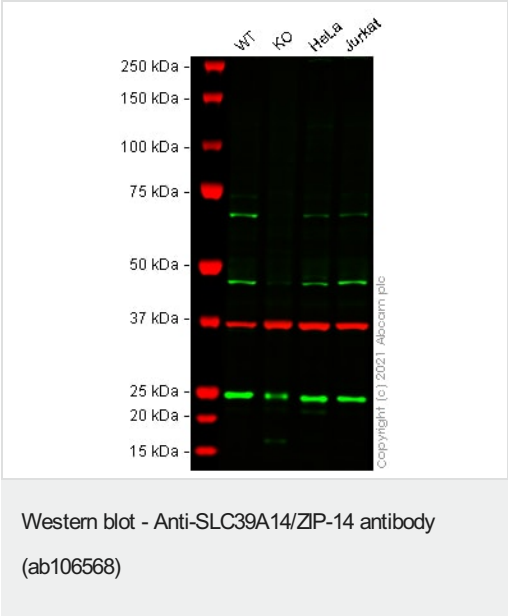
Abpromise™承诺保证使用ab106568于以下的经测试应用

“应用说明”部分 下显示的仅为推荐的起始稀释度;实际最佳的稀释度/浓度应由使用者检定。

应用	Ab评论	说明
WB		Use a concentration of 1 - 2 µg/ml. Predicted molecular weight: 54 kDa. WB suitable for Human samples only
IHC-P		Use a concentration of 2.5 - 20 µg/ml. IHC-P suitable for Mouse samples only

靶标	
功能	May be able to transport iron (By similarity). Acts as a zinc-influx transporter.
组织特异性	Ubiquitously expressed, with increased expression in liver, pancreas, fetal liver, thyroid gland, left and right ventricle, right atrium and fetal heart. Weakly expressed in spleen, thymus, and peripheral blood leukocytes.
序列相似性	Belongs to the ZIP transporter (TC 2.A.5) family.
细胞定位	Cell membrane. Cell projection > lamellipodium. Localized to the plasma membrane and also found colocalized with F-actin concentrated on lamellipodiae.

图片



All lanes : Anti-SLC39A14/ZIP-14 antibody (ab106568)

- Lane 1 : Wild-type HEK-293T cell lysate
- Lane 2 : SLC39A14 knockout HEK-293T cell lysate
- Lane 3 : HeLa cell lysate
- Lane 4 : Jurkat cell lysate

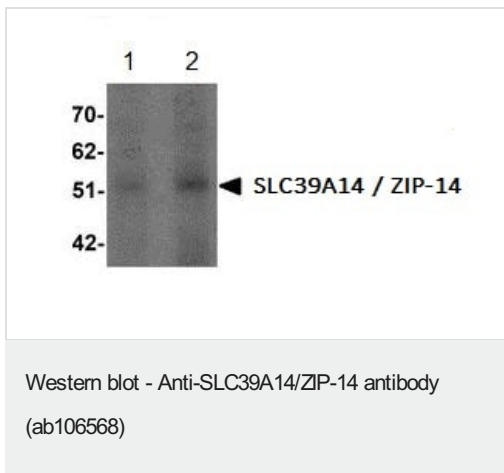
Lysates/proteins at 20 µg per lane.

Performed under reducing conditions.

Predicted band size: 54 kDa
Observed band size: 68 kDa

False colour image of Western blot: Anti-SLC39A14/ZIP-14 antibody staining at 1 µg/ml, shown in green; Mouse anti-GAPDH antibody [6C5] ([ab8245](#)) loading control staining at 1/20000 dilution, shown in red. In Western blot, ab106568 was shown to bind specifically to SLC39A14/ZIP-14. A band was observed at 68 kDa

in wild-type HEK-293T cell lysates with no signal observed at this size in SLC39A14 knockout cell line **ab266126** (knockout cell lysate **ab258683**). To generate this image, wild-type and SLC39A14 knockout HEK-293T cell lysates were analysed. First, samples were run on an SDS-PAGE gel then transferred onto a nitrocellulose membrane. Membranes were blocked in 3 % milk in TBS-0.1 % Tween®20 (TBS-T) before incubation with primary antibodies overnight at 4 °C. Blots were washed four times in TBS-T, incubated with secondary antibodies for 1 h at room temperature, washed again four times then imaged. Secondary antibodies used were Goat anti-Rabbit IgG H&L (IRDye® 800CW) preabsorbed (**ab216773**) and Goat anti-Mouse IgG H&L (IRDye® 680RD) preabsorbed (**ab216776**) at 1/20000 dilution.



Lane 1 : Anti-SLC39A14/ZIP-14 antibody (ab106568) at 1 µg/ml

Lane 2 : Anti-SLC39A14/ZIP-14 antibody (ab106568) at 2 µg/ml

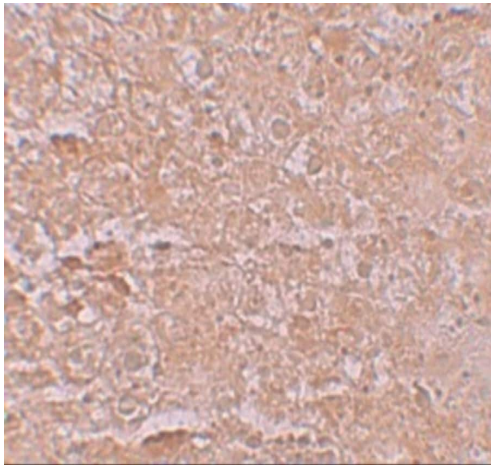
All lanes : Human spleen tissue lysate

Lysates/proteins at 15 µg per lane.

Predicted band size: 54 kDa

Immunohistochemistry (Formalin/PFA-fixed paraffin-embedded sections) - Anti-SLC39A14/ZIP-14 antibody (ab106568)

Immunohistochemical analysis of SLC39A14/ZIP-14 in mouse liver tissue using ab106568 at 20 µg/ml.



Immunohistochemistry of mouse liver tissue using ab106568 at 2.5 $\mu\text{g/ml}$

Immunohistochemistry (Formalin/PFA-fixed paraffin-embedded sections) - Anti-SLC39A4/ZIP-14 antibody (ab106568)

Please note: All products are "FOR RESEARCH USE ONLY. NOT FOR USE IN DIAGNOSTIC PROCEDURES"

Our Abpromise to you: Quality guaranteed and expert technical support

- Replacement or refund for products not performing as stated on the datasheet
- Valid for 12 months from date of delivery
- Response to your inquiry within 24 hours
- We provide support in Chinese, English, French, German, Japanese and Spanish
- Extensive multi-media technical resources to help you
- We investigate all quality concerns to ensure our products perform to the highest standards

If the product does not perform as described on this datasheet, we will offer a refund or replacement. For full details of the Abpromise, please visit <https://www.abcam.cn/abpromise> or contact our technical team.

Terms and conditions

- Guarantee only valid for products bought direct from Abcam or one of our authorized distributors