



### Anti-SLC12A3 antibody ab95302

★★★★★ [1 Abreviews](#) [6 References](#) [2 图像](#)

#### 概述

产品名称	Anti-SLC12A3抗体
描述	兔多克隆抗体to SLC12A3
宿主	Rabbit
经测试应用	适用于: ICC/IF, WB
种属反应性	与反应: Mouse, Rat, Human
免疫原	Synthetic peptide: PGEPRKVRPTLADLHSFLKQEG , corresponding to N terminal amino acids 74-95 of Rat SLC12A3 (NP_062218)  <a href="#">Run BLAST with</a>  <a href="#">Run BLAST with</a>
阳性对照	Rat kidney tissue lysate.
常规说明	<p>The Life Science industry has been in the grips of a reproducibility crisis for a number of years. Abcam is leading the way in addressing this with our range of recombinant monoclonal antibodies and knockout edited cell lines for gold-standard validation. Please check that this product meets your needs before purchasing.</p> <p>If you have any questions, special requirements or concerns, please send us an inquiry and/or contact our Support team ahead of purchase. Recommended alternatives for this product can be found below, along with publications, customer reviews and Q&amp;As</p>

#### 性能

形式	Liquid
存放说明	Shipped at 4°C. Store at -20°C. Stable for 12 months at -20°C.
存储溶液	Preservative: 0.007% Sodium azide Constituents: 0.1% BSA, 50% Glycerol
纯度	Immunogen affinity purified
克隆	多克隆
同种型	IgG

#### 应用

The Abpromise guarantee      Abpromise™承诺保证使用ab95302于以下的经测试应用

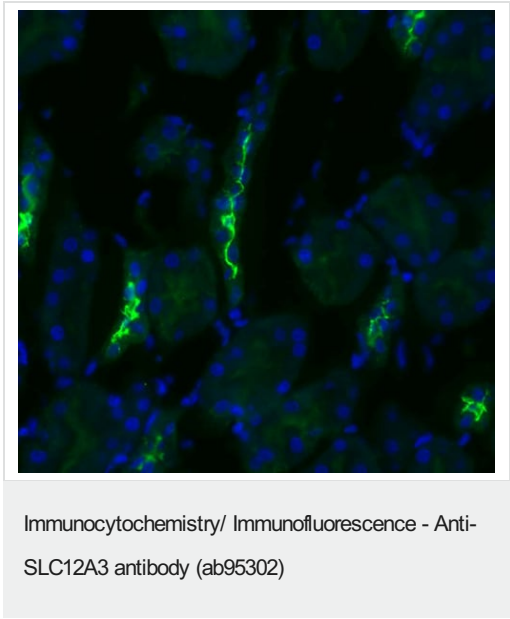
“应用说明”部分 下显示的仅为推荐的起始稀释度;实际最佳的稀释度/浓度应由使用者检定。

应用	Ab评论	说明
ICC/IF		1/200.
WB		1/1000. Detects a band of approximately 160 kDa (predicted molecular weight: 111 kDa).

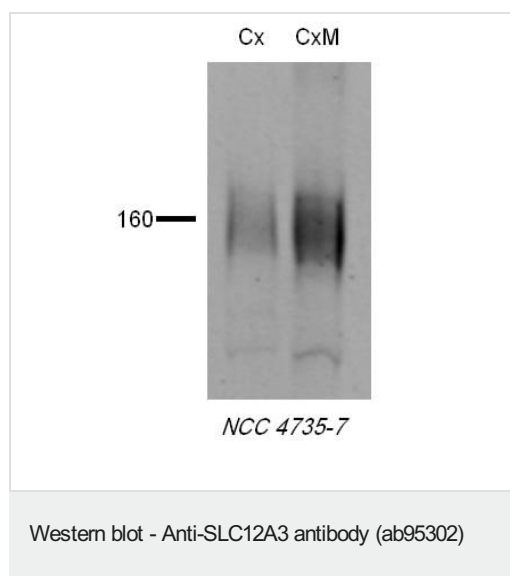
靶标

功能	Electrically silent transporter system. Mediates sodium and chloride reabsorption.
组织特异性	Predominant in kidney.
疾病相关	Defects in SLC12A3 are the cause of Gitelman syndrome (GS) [MIM:263800]. GS is an autosomal recessive disorder characterized by hypokalemic alkalosis in combination with hypomagnesemia, low urinary calcium, and increased renin activity associated with normal blood pressure. Patients are often asymptomatic or present transient periods of muscular weakness and tetany, usually accompanied by abdominal pain, vomiting and fever. The phenotype is highly heterogeneous in terms of age at onset and severity. Cardinal features such as hypocalciuria and hypomagnesemia might also change during the life cycle of a given patient. GS has overlapping features with Bartter syndrome.
序列相似性	Belongs to the SLC12A transporter family.
细胞定位	Membrane.

图片



Immunofluorescent analysis of SLC12A3 in Rat kidney tissues using ab95302 at 1:200 dilution. DAPI merge.



Western blot detection of SLC12A3 in Rat tissues using ab95302 at 1:1000 dilution.

**Please note:** All products are "FOR RESEARCH USE ONLY. NOT FOR USE IN DIAGNOSTIC PROCEDURES"

### Our Abpromise to you: Quality guaranteed and expert technical support

---

- Replacement or refund for products not performing as stated on the datasheet
- Valid for 12 months from date of delivery
- Response to your inquiry within 24 hours
- We provide support in Chinese, English, French, German, Japanese and Spanish
- Extensive multi-media technical resources to help you
- We investigate all quality concerns to ensure our products perform to the highest standards

If the product does not perform as described on this datasheet, we will offer a refund or replacement. For full details of the Abpromise, please visit <https://www.abcam.cn/abpromise> or contact our technical team.

### Terms and conditions

---

- Guarantee only valid for products bought direct from Abcam or one of our authorized distributors