

Anti-SKP2 antibody [EPR3306(2)] ab124799

敲除验证
重组
RabMAb

★★★★★
[1 Abreviews](#)
[1 References](#)
[4 图像](#)

概述

产品名称	Anti-SKP2抗体[EPR3306(2)]
描述	兔单克隆抗体[EPR3306(2)] to SKP2
宿主	Rabbit
经测试应用	适用于: WB, ICC/IF 不适用于: Flow Cyt, IHC-P or IP
种属反应性	与反应: Human 不与反应: Mouse, Rat
免疫原	Synthetic peptide within Human SKP2 aa 150-250. The exact sequence is proprietary.
阳性对照	293T, HeLa, SW480 and LnCaP cell lysates; HeLa cells.
常规说明	<p>This product is a recombinant monoclonal antibody, which offers several advantages including:</p> <ul style="list-style-type: none"> - High batch-to-batch consistency and reproducibility - Improved sensitivity and specificity - Long-term security of supply - Animal-free production <p>For more information see here.</p> <p>Our RabMAb[®] technology is a patented hybridoma-based technology for making rabbit monoclonal antibodies. For details on our patents, please refer to RabMAb[®] patents.</p>

性能

形式	Liquid
存放说明	Shipped at 4°C. Store at -20°C. Stable for 12 months at -20°C.
存储溶液	pH: 7.20 Preservative: 0.05% Sodium azide Constituents: 0.1% BSA, 40% Glycerol (glycerin, glycerine), 9.85% Tris glycine, 50% Tissue culture supernatant
纯度	Protein A purified
克隆	单克隆
克隆编号	EPR3306(2)

同种型

IgG

应用

The Abpromise guarantee

Abpromise™ 承诺保证使用 ab124799 于以下的经测试应用

“应用说明”部分 下显示的仅为推荐的起始稀释度;实际最佳的稀释度/浓度应由使用者检定。

应用	Ab评论	说明
WB		1/1000 - 1/10000. Detects a band of approximately 46, 48 kDa (predicted molecular weight: 46, 48 kDa).
ICC/IF	★★★★★ (1)	1/50 - 1/100.

应用说明

Is unsuitable for Flow Cyt, IHC-P or IP.

靶标

功能

Substrate recognition component of a SCF (SKP1-CUL1-F-box protein) E3 ubiquitin-protein ligase complex which mediates the ubiquitination and subsequent proteasomal degradation of target proteins involved in cell cycle progression, signal transduction and transcription. Specifically recognizes phosphorylated CDKN1B/p27kip and is involved in regulation of G1/S transition. Degradation of CDKN1B/p27kip also requires CKS1. Recognizes target proteins ORC1, CDT1, RBL2, MLL, CDK9, RAG2, FOXO1A, UBP43, and probably MYC, TOB1 and TAL1. Degradation of TAL1 also requires STUB1. Recognizes CDKN1A in association with CCNE1 or CCNE2 and CDK2.

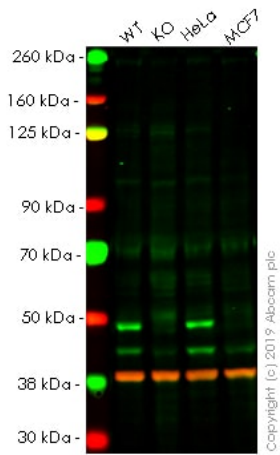
通路

Protein modification; protein ubiquitination.

序列相似性

Contains 1 F-box domain.
Contains 9 LRR (leucine-rich) repeats.

图片



Western blot - Anti-SKP2 antibody [EPR3306(2)] (ab124799)

All lanes : Anti-SKP2 antibody [EPR3306(2)] (ab124799) at 1/1000 dilution

Lane 1 : Wild-type HAP1 whole cell lysate

Lane 2 : SKP2 knockout HAP1 whole cell lysate

Lane 3 : HeLa whole cell lysate

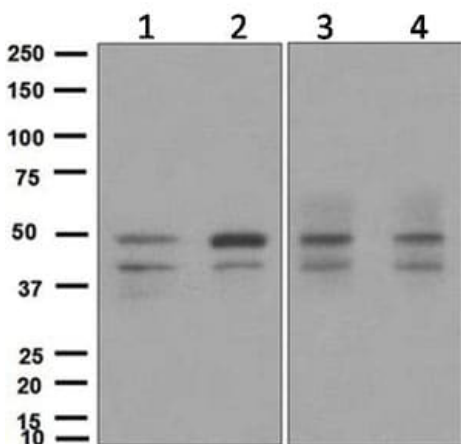
Lane 4 : MCF7 whole cell lysate

Lysates/proteins at 20 µg per lane.

Predicted band size: 46, 48 kDa

Lanes 1 - 4: Merged signal (red and green). Green - ab124799 observed at 52 kDa. Red - loading control, **ab8245**, observed at 37 kDa.

ab124799 was shown to recognize in wild-type HAP1 cells as signal was lost at the expected MW in SKP2 knockout cells. Additional cross-reactive bands were observed in the wild-type and knockout cells. Wild-type and SKP2 knockout samples were subjected to SDS-PAGE. The membrane was blocked with 3% NF Milk. Ab124799 and **ab8245** (Mouse anti GAPDH loading control) were incubated overnight at 4°C at 1/1000 dilution and 1/20000 dilution respectively. Blots were developed with Goat anti-Rabbit IgG H&L (IRDye® 800CW) preabsorbed **ab216773** and Goat anti-Mouse IgG H&L (IRDye® 680RD) preabsorbed **ab216776** secondary antibodies at 1/20000 dilution for 1 hour at room temperature before imaging.



Western blot - Anti-SKP2 antibody [EPR3306(2)] (ab124799)

All lanes : Anti-SKP2 antibody [EPR3306(2)] (ab124799) at 1/1000 dilution

Lane 1 : 293T cell lysates

Lane 2 : HeLa cell lysates

Lane 3 : SW480 cell lysates

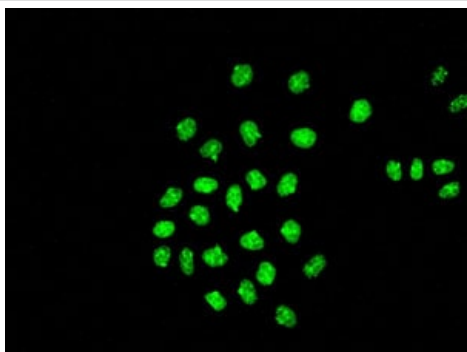
Lane 4 : LnCaP cell lysates

Lysates/proteins at 10 µg per lane.

Secondary

All lanes : HRP labelled goat anti-rabbit at 1/2000 dilution

Predicted band size: 46, 48 kDa



ab124799, at a 1/50 dilution, staining SKP2 in HeLa cells by Immunofluorescence.

Immunocytochemistry/ Immunofluorescence - Anti-SKP2 antibody [EPR3306(2)] (ab124799)

Why choose a recombinant antibody?



Research with confidence
Consistent and reproducible results



Long-term and scalable supply
Recombinant technology



Success from the first experiment
Confirmed specificity



Ethical standards compliant
Animal-free production

Anti-SKP2 antibody [EPR3306(2)] (ab124799)

Please note: All products are "FOR RESEARCH USE ONLY. NOT FOR USE IN DIAGNOSTIC PROCEDURES"

Our Abpromise to you: Quality guaranteed and expert technical support

- Replacement or refund for products not performing as stated on the datasheet
- Valid for 12 months from date of delivery
- Response to your inquiry within 24 hours
- We provide support in Chinese, English, French, German, Japanese and Spanish
- Extensive multi-media technical resources to help you
- We investigate all quality concerns to ensure our products perform to the highest standards

If the product does not perform as described on this datasheet, we will offer a refund or replacement. For full details of the Abpromise, please visit <https://www.abcam.cn/abpromise> or contact our technical team.

Terms and conditions

- Guarantee only valid for products bought direct from Abcam or one of our authorized distributors