

Anti-Skp1 antibody [EPR3303] ab80586

重组 RabMAb

[1 Abreviews](#) [2 References](#) [4 图像](#)

概述

产品名称	Anti-Skp1抗体[EPR3303]
描述	兔单克隆抗体[EPR3303] to Skp1
宿主	Rabbit
经测试应用	适用于: Flow Cyt (Intra), WB, IHC-P 不适用于: ICC/IF or IP
种属反应性	与反应: Mouse, Rat, Human
免疫原	Synthetic peptide within Human Skp1. The exact sequence is proprietary.
阳性对照	WB: lysates from 293, HeLa, PC12 or 3T3 cells; IHC-P: Human brain tissue; Flow Cyt (intra): permeabilized HeLa cells.
常规说明	This product is a recombinant monoclonal antibody, which offers several advantages including: <ul style="list-style-type: none"> - High batch-to-batch consistency and reproducibility - Improved sensitivity and specificity - Long-term security of supply - Animal-free production For more information see here . Our RabMAb [®] technology is a patented hybridoma-based technology for making rabbit monoclonal antibodies. For details on our patents, please refer to RabMAb[®] patents .

性能

形式	Liquid
存放说明	Shipped at 4°C. Store at -20°C. Stable for 12 months at -20°C.
存储溶液	pH: 7.20 Preservative: 0.01% Sodium azide Constituents: 0.31% Sodium citrate, 0.175% Sodium chloride, 0.0172% EDTA, 59% PBS, 40% Glycerol (glycerin, glycerine), 0.05% BSA
纯度	Protein A purified
克隆	单克隆
克隆编号	EPR3303

同种型

IgG

应用

The Abpromise guarantee

Abpromise™承诺保证使用ab80586于以下的经测试应用

“应用说明”部分 下显示的仅为推荐的起始稀释度;实际最佳的稀释度/浓度应由使用者检定。

应用	Ab评论	说明
Flow Cyt (Intra)		
WB		
IHC-P		

应用说明

Flow Cyt: 1/50.
IHC-P: 1/100 - 1/250. Antigen retrieval is recommended.
WB: 1/1000 - 1/5000. Detects a band of approximately 19 kDa (predicted molecular weight: 19 kDa).

Is unsuitable for ICC or IP.

Not yet tested in other applications.
Optimal dilutions/concentrations should be determined by the end user.

靶标

功能

Essential component of the SCF (SKP1-CUL1-F-box protein) ubiquitin ligase complex, which mediates the ubiquitination of proteins involved in cell cycle progression, signal transduction and transcription. In the SCF complex, serves as an adapter that links the F-box protein to CUL1. SCF(BTRC) mediates the ubiquitination of NFKBIA at 'Lys-21' and 'Lys-22'; the degradation frees the associated NFKB1-RELA dimer to translocate into the nucleus and to activate transcription. SCF(Cyclin F) directs ubiquitination of CP110.

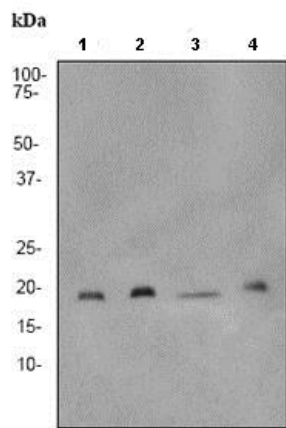
通路

Protein modification; protein ubiquitination.

序列相似性

Belongs to the SKP1 family.

图片



Western blot - Anti-Skp1 antibody [EPR3303]
(ab80586)

All lanes : Anti-Skp1 antibody [EPR3303] (ab80586) at 1/5000 dilution

Lane 1 : 293 cell lysate

Lane 2 : HeLa cell lysate

Lane 3 : PC12 cell lysate

Lane 4 : 3T3 cell lysate

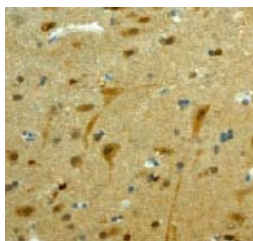
Lysates/proteins at 10 µg per lane.

Secondary

All lanes : goat anti-rabbit HRP at 1/2000 dilution

Predicted band size: 19 kDa

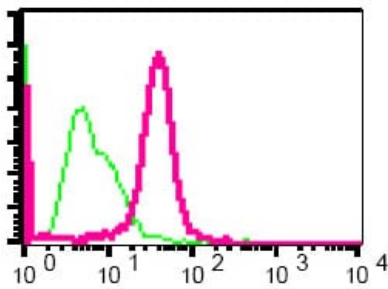
Observed band size: 19 kDa



Immunohistochemistry (Formalin/PFA-fixed paraffin-
embedded sections) - Anti-Skp1 antibody
[EPR3303] (ab80586)

Immunohistochemistry analysis of paraffin-embedded Human brain tissue with 1/100 ab80586.

Perform heat mediated antigen retrieval with EDTA buffer pH 9 before commencing with IHC staining protocol.



ab80586 at 1/50 dilution (red) staining Skp1 in permeabilized HeLa cells by intracellular flow cytometry. Rabbit IgG (negative) is shown in green.

Flow Cytometry (Intracellular) - Anti-Skp1 antibody
[EPR3303] (ab80586)

Why choose a recombinant antibody?



Research with confidence
Consistent and reproducible results



Long-term and scalable supply
Recombinant technology



Success from the first experiment
Confirmed specificity



Ethical standards compliant
Animal-free production

Anti-Skp1 antibody [EPR3303] (ab80586)

Please note: All products are "FOR RESEARCH USE ONLY. NOT FOR USE IN DIAGNOSTIC PROCEDURES"

Our Abpromise to you: Quality guaranteed and expert technical support

- Replacement or refund for products not performing as stated on the datasheet
- Valid for 12 months from date of delivery
- Response to your inquiry within 24 hours
- We provide support in Chinese, English, French, German, Japanese and Spanish
- Extensive multi-media technical resources to help you
- We investigate all quality concerns to ensure our products perform to the highest standards

If the product does not perform as described on this datasheet, we will offer a refund or replacement. For full details of the Abpromise, please visit <https://www.abcam.cn/abpromise> or contact our technical team.

Terms and conditions

- Guarantee only valid for products bought direct from Abcam or one of our authorized distributors