

Anti-Skp1 antibody ab41865

2 图像

概述

| | |
|-------|--|
| 产品名称 | Anti-Skp1抗体 |
| 描述 | 兔多克隆抗体to Skp1 |
| 宿主 | Rabbit |
| 经测试应用 | 适用于: IHC-P, WB |
| 种属反应性 | 与反应: Mouse, Human 预测可用于: Rat  |
| 免疫原 | Synthetic peptide within Human Skp1 aa 100 to the C-terminus (C terminal). The exact sequence is proprietary. Database link: P63208 |
| 阳性对照 | Breast carcinoma. |
| 常规说明 | This product is FOR RESEARCH USE ONLY. For commercial use, please contact partnerships@abcam.com. The Life Science industry has been in the grips of a reproducibility crisis for a number of years. Abcam is leading the way in addressing this with our range of recombinant monoclonal antibodies and knockout edited cell lines for gold-standard validation. Please check that this product meets your needs before purchasing. If you have any questions, special requirements or concerns, please send us an inquiry and/or contact our Support team ahead of purchase. Recommended alternatives for this product can be found below, along with publications, customer reviews and Q&As |

性能

| | |
|------|---|
| 形式 | Liquid |
| 存放说明 | Shipped at 4°C. Upon delivery aliquot and store at -20°C. Avoid freeze / thaw cycles. |
| 存储溶液 | pH: 7.60 Preservative: 0.1% Sodium azide Constituents: PBS, 1% BSA |
| 纯度 | Immunogen affinity purified |
| 克隆 | 多克隆 |
| 同种型 | IgG |

应用

The Abpromise guarantee **Abpromise™** 承诺保证使用 ab41865 于以下的经测试应用

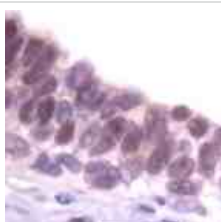
“应用说明”部分 下显示的仅为推荐的起始稀释度;实际最佳的稀释度/浓度应由使用者检定。

| 应用 | Ab评论 | 说明 |
|-------|------|--|
| IHC-P | | 1/100. Perform heat mediated antigen retrieval before commencing with IHC staining protocol. |
| WB | | Use at an assay dependent concentration. |

靶标

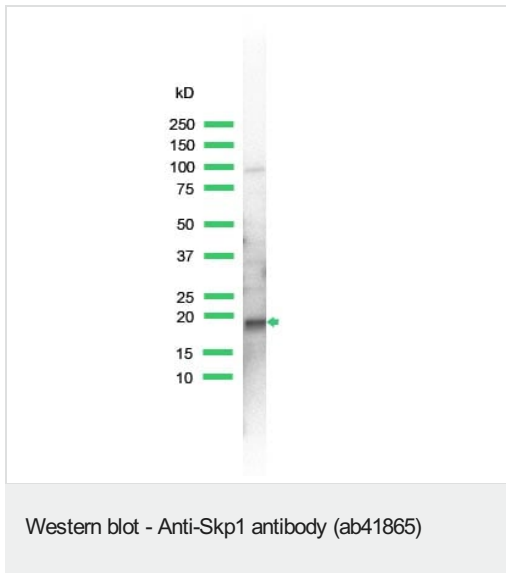
| | |
|--------------|--|
| 功能 | Essential component of the SCF (SKP1-CUL1-F-box protein) ubiquitin ligase complex, which mediates the ubiquitination of proteins involved in cell cycle progression, signal transduction and transcription. In the SCF complex, serves as an adapter that links the F-box protein to CUL1. SCF(BTRC) mediates the ubiquitination of NFKBIA at 'Lys-21' and 'Lys-22'; the degradation frees the associated NFKB1-RELA dimer to translocate into the nucleus and to activate transcription. SCF(Cyclin F) directs ubiquitination of CP110. |
| 通路 | Protein modification; protein ubiquitination. |
| 序列相似性 | Belongs to the SKP1 family. |

图片



Ab41865 staining human Skp1 in human breast carcinoma by immunohistochemistry using formalin fixed paraffin embedded tissue.

Immunohistochemistry (Formalin/PFA-fixed paraffin-embedded sections) - Anti-Skp1 antibody (ab41865)



Anti-Skp1 antibody (ab41865) at 1/25 dilution + lysate prepared from NIH3T3 cells

Please note: All products are "FOR RESEARCH USE ONLY. NOT FOR USE IN DIAGNOSTIC PROCEDURES"

Our Abpromise to you: Quality guaranteed and expert technical support

- Replacement or refund for products not performing as stated on the datasheet
- Valid for 12 months from date of delivery
- Response to your inquiry within 24 hours
- We provide support in Chinese, English, French, German, Japanese and Spanish
- Extensive multi-media technical resources to help you
- We investigate all quality concerns to ensure our products perform to the highest standards

If the product does not perform as described on this datasheet, we will offer a refund or replacement. For full details of the Abpromise, please visit <https://www.abcam.cn/abpromise> or contact our technical team.

Terms and conditions

- Guarantee only valid for products bought direct from Abcam or one of our authorized distributors