

Anti-Skeletrophin / Mib2 antibody ab99378

[1 References](#) [1 图像](#)

概述

产品名称	Anti-Skeletrophin / Mib2抗体
描述	兔多克隆抗体to Skeletrophin / Mib2
宿主	Rabbit
经测试应用	适用于: WB
种属反应性	与反应: Human
免疫原	Synthetic peptide. This information is proprietary to Abcam and/or its suppliers.
阳性对照	HeLa, 293T lysates
常规说明	<p>Immunoglobulin concentration was determined by extinction coefficient: absorbance at 280 nm of 1.4 equals 1.0 mg of IgG.</p> <p>The Life Science industry has been in the grips of a reproducibility crisis for a number of years. Abcam is leading the way in addressing this with our range of recombinant monoclonal antibodies and knockout edited cell lines for gold-standard validation. Please check that this product meets your needs before purchasing.</p> <p>If you have any questions, special requirements or concerns, please send us an inquiry and/or contact our Support team ahead of purchase. Recommended alternatives for this product can be found below, along with publications, customer reviews and Q&As</p>

性能

形式	Liquid
存放说明	Shipped at 4°C. Upon delivery aliquot and store at -20°C. Avoid freeze / thaw cycles.
存储溶液	pH: 7 Preservative: 0.09% Sodium azide Constituent: Tris citrate/phosphate
纯度	Immunogen affinity purified
克隆	多克隆
同种型	IgG

应用

The Abpromise guarantee

Abpromise™ 承诺保证使用 ab99378 于以下的经测试应用

“应用说明”部分下显示的仅为推荐的起始稀释度；实际最佳的稀释度/浓度应由使用者检定。

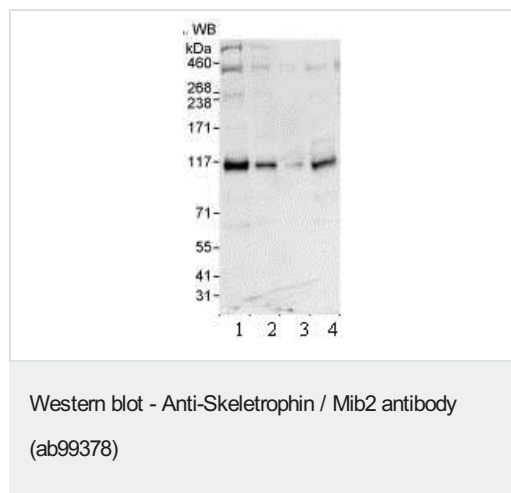
应用	Ab评论	说明
WB		1/2000 - 1/10000. Predicted molecular weight: 110 kDa.

靶标

相关性 Skeletrophin, also known as Mib2, is a homolog of the zebrafish protein Mindbomb. Skeletrophin is an E3 ubiquitin ligase, expressed mainly in skeletal muscle, which is downregulated in malignant melanoma.

细胞定位 Cytoplasmic

图片



All lanes : Anti-Skeletrophin / Mib2 antibody (ab99378) at 0.1 $\mu\text{g/ml}$

Lane 1 : HeLa whole cell lysate at 50 μg

Lane 2 : HeLa whole cell lysate at 15 μg

Lane 3 : HeLa whole cell lysate at 5 μg

Lane 4 : 293T whole cell lysate at 50 μg

Predicted band size: 110 kDa

Exposure time: 30 seconds

Please note: All products are "FOR RESEARCH USE ONLY. NOT FOR USE IN DIAGNOSTIC PROCEDURES"

Our Abpromise to you: Quality guaranteed and expert technical support

- Replacement or refund for products not performing as stated on the datasheet
- Valid for 12 months from date of delivery
- Response to your inquiry within 24 hours
- We provide support in Chinese, English, French, German, Japanese and Spanish
- Extensive multi-media technical resources to help you
- We investigate all quality concerns to ensure our products perform to the highest standards

If the product does not perform as described on this datasheet, we will offer a refund or replacement. For full details of the Abpromise, please visit <https://www.abcam.cn/abpromise> or contact our technical team.

Terms and conditions

- Guarantee only valid for products bought direct from Abcam or one of our authorized distributors