

Anti-SIRP alpha antibody ab53721

★★★★★ [1 Abreviews](#) [6 References](#) [3 图像](#)

概述

| | |
|-------|---|
| 产品名称 | Anti-SIRP alpha抗体 |
| 描述 | 兔多克隆抗体to SIRP alpha |
| 宿主 | Rabbit |
| 特异性 | Detects endogenous levels of total Sirp alpha1 protein. |
| 经测试应用 | 适用于: WB, IHC-P, ICC/IF |
| 种属反应性 | 与反应: Human |
| 免疫原 | Synthetic peptide corresponding to Human SIRP alpha aa 480-496. Sequence: CRTPKQPAPKPEPSFSEY Database link: P78324 (Peptide available as ab156313) |

 [Run BLAST with](#)

 [Run BLAST with](#)

常规说明

The Life Science industry has been in the grips of a reproducibility crisis for a number of years. Abcam is leading the way in addressing this with our range of recombinant monoclonal antibodies and knockout edited cell lines for gold-standard validation. Please check that this product meets your needs before purchasing.

If you have any questions, special requirements or concerns, please send us an inquiry and/or contact our Support team ahead of purchase. Recommended alternatives for this product can be found below, along with publications, customer reviews and Q&As

性能

| | |
|------|--|
| 形式 | Liquid |
| 存放说明 | Shipped at 4°C. Upon delivery aliquot and store at -20°C. Avoid freeze / thaw cycles. |
| 存储溶液 | pH: 7 Preservative: 0.02% Sodium azide Constituents: 50% Glycerol, 0.87% Sodium chloride, PBS Without Mg+2 and Ca+2 |
| 纯度 | Immunogen affinity purified |

克隆 多克隆
同种型 IgG

应用

The Abpromise guarantee **Abpromise™** 承诺保证使用ab53721于以下的经测试应用

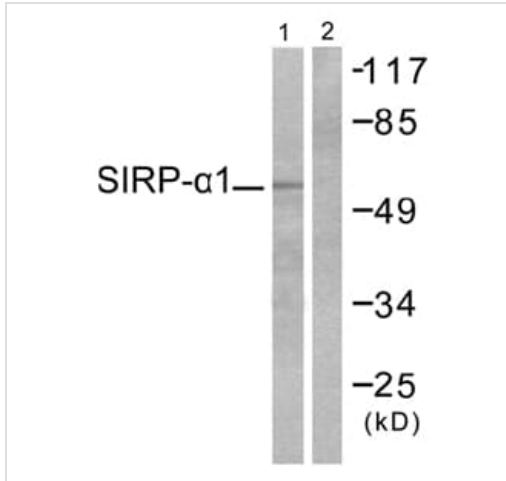
“应用说明”部分 下显示的仅为推荐的起始稀释度;实际最佳的稀释度/浓度应由使用者检定。

| 应用 | Ab评论 | 说明 |
|--------|-----------|--|
| WB | ★★★★★ (1) | 1/500 - 1/1000. Detects a band of approximately 56 kDa (predicted molecular weight: 56 kDa). |
| IHC-P | | 1/50 - 1/100. |
| ICC/IF | | Use a concentration of 5 µg/ml. |

靶标

| | |
|-------|--|
| 功能 | Immunoglobulin-like cell surface receptor for CD47. Acts as docking protein and induces translocation of PTPN6, PTPN11 and other binding partners from the cytosol to the plasma membrane. Supports adhesion of cerebellar neurons, neurite outgrowth and glial cell attachment. May play a key role in intracellular signaling during synaptogenesis and in synaptic function (By similarity). Involved in the negative regulation of receptor tyrosine kinase-coupled cellular responses induced by cell adhesion, growth factors or insulin. Mediates negative regulation of phagocytosis, mast cell activation and dendritic cell activation. CD47 binding prevents maturation of immature dendritic cells and inhibits cytokine production by mature dendritic cells. |
| 组织特异性 | Ubiquitous. Highly expressed in brain. Detected on myeloid cells, but not T-cells. Detected at lower levels in heart, placenta, lung, testis, ovary, colon, liver, small intestine, prostate, spleen, kidney, skeletal muscle and pancreas. |
| 序列相似性 | Contains 2 Ig-like C1-type (immunoglobulin-like) domains. Contains 1 Ig-like V-type (immunoglobulin-like) domain. |
| 翻译后修饰 | N-glycosylated. Phosphorylated on tyrosine residues in response to stimulation with EGF, growth hormone, insulin and PDGF. Dephosphorylated by PTPN11. |
| 细胞定位 | Membrane. |

图片



Western blot - Anti-SIRP alpha antibody (ab53721)

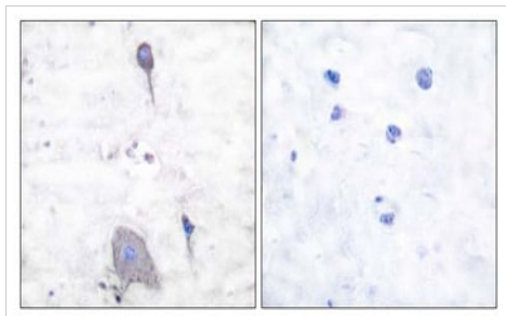
All lanes : Anti-SIRP alpha antibody (ab53721) at 1/500 dilution

Lane 1 : Extracts from HepG2 cells

Lane 2 : Extracts from HepG2 cells with immunizing peptide

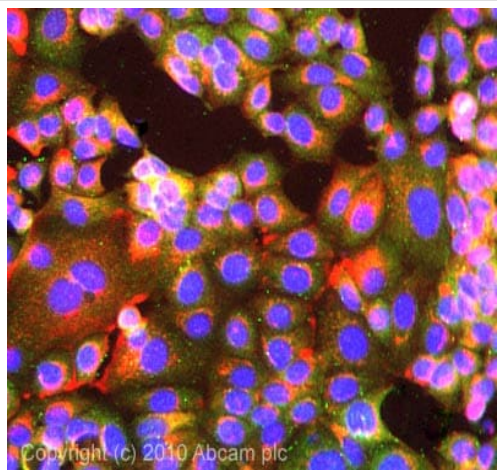
Predicted band size: 56 kDa

Observed band size: 56 kDa



Immunohistochemistry (Formalin/PFA-fixed paraffin-embedded sections) - Anti-SIRP alpha antibody (ab53721)

Ab53721 at 1/50 dilution, staining paraffin embedded human brain, in the presence (right) and absence (left) of blocking peptide.



Immunocytochemistry/ Immunofluorescence - Anti-SIRP alpha antibody (ab53721)

ICC/IF image of ab53721 stained Mcf7 cells. The cells were 100% methanol fixed (5 min) and then incubated in 1%BSA / 10% normal goat serum / 0.3M glycine in 0.1% PBS-Tween for 1h to permeabilise the cells and block non-specific protein-protein interactions. The cells were then incubated with the antibody (ab53721, 5µg/ml) overnight at +4°C. The secondary antibody (green) was Alexa Fluor® 488 goat anti-rabbit IgG (H+L) used at a 1/1000 dilution for 1h. Alexa Fluor® 594 WGA was used to label plasma membranes (red) at a 1/200 dilution for 1h. DAPI was used to stain the cell nuclei (blue) at a concentration of 1.43µM.

Please note: All products are "FOR RESEARCH USE ONLY. NOT FOR USE IN DIAGNOSTIC PROCEDURES"

Our Abpromise to you: Quality guaranteed and expert technical support

- Replacement or refund for products not performing as stated on the datasheet
- Valid for 12 months from date of delivery
- Response to your inquiry within 24 hours

- We provide support in Chinese, English, French, German, Japanese and Spanish
- Extensive multi-media technical resources to help you
- We investigate all quality concerns to ensure our products perform to the highest standards

If the product does not perform as described on this datasheet, we will offer a refund or replacement. For full details of the Abpromise, please visit <https://www.abcam.cn/abpromise> or contact our technical team.

Terms and conditions

- Guarantee only valid for products bought direct from Abcam or one of our authorized distributors