


Anti-SIN1 antibody ab71152

8 References **3 图像**

概述

产品名称	Anti-SIN1抗体
描述	兔多克隆抗体to SIN1
宿主	Rabbit
经测试应用	适用于: WB, IP, IHC-P
种属反应性	与反应: Human 预测可用于: Rat, Sheep, Horse, Chicken, Guinea pig, Cow, Dog, Turkey, Pig, Chimpanzee, Rhesus monkey, Gorilla, Orangutan, Platypus 
免疫原	A synthetic peptide corresponding to a region between residue 470 and the C-terminus (residue 522) of human SIN1 (NP_001006618.1).
阳性对照	Whole cell lysate from Hela cells.
常规说明	<p>The Life Science industry has been in the grips of a reproducibility crisis for a number of years. Abcam is leading the way in addressing this with our range of recombinant monoclonal antibodies and knockout edited cell lines for gold-standard validation. Please check that this product meets your needs before purchasing.</p> <p>If you have any questions, special requirements or concerns, please send us an inquiry and/or contact our Support team ahead of purchase. Recommended alternatives for this product can be found below, along with publications, customer reviews and Q&As</p>

性能

形式	Liquid
存放说明	Shipped at 4°C. Upon delivery aliquot and store at -20°C. Avoid freeze / thaw cycles.
存储溶液	pH: 7 Preservative: 0.09% Sodium azide Constituents: 1.815% Tris, 1.764% Sodium citrate, 0.021% PBS
纯度	Immunogen affinity purified
克隆	多克隆
同种型	IgG

应用

The Abpromise guarantee

Abpromise™ 承诺保证使用ab71152于以下的经测试应用

“应用说明”部分 下显示的仅为推荐的起始稀释度;实际最佳的稀释度/浓度应由使用者检定。

应用	Ab评论	说明
WB		1/2000 - 1/10000. Detects a band of approximately 30, 50, 65 kDa (predicted molecular weight: 59 kDa).
IP		Use at 2-5 µg/mg of lysate.
IHC-P		1/1000 - 1/5000. Perform heat mediated antigen retrieval with citrate buffer pH 6 before commencing with IHC staining protocol.

靶标

功能

Subunit of mTORC2, which regulates cell growth and survival in response to hormonal signals. mTORC2 is activated by growth factors, but, in contrast to mTORC1, seems to be nutrient-insensitive. mTORC2 seems to function upstream of Rho GTPases to regulate the actin cytoskeleton, probably by activating one or more Rho-type guanine nucleotide exchange factors. mTORC2 promotes the serum-induced formation of stress-fibers or F-actin. mTORC2 plays a critical role in AKT1 'Ser-473' phosphorylation, which may facilitate the phosphorylation of the activation loop of AKT1 on 'Thr-308' by PDK1 which is a prerequisite for full activation. mTORC2 regulates the phosphorylation of SGK1 at 'Ser-422'. mTORC2 also modulates the phosphorylation of PRKCA on 'Ser-657'. Within mTORC2, MAPKAP1 is required for complex formation and mTORC2 kinase activity. MAPKAP1 inhibits MAP3K2 by preventing its dimerization and autophosphorylation. Inhibits HRAS and KRAS signaling. Enhances osmotic stress-induced phosphorylation of ATF2 and ATF2-mediated transcription.

组织特异性

Ubiquitously expressed, with highest levels in heart and skeletal muscle.

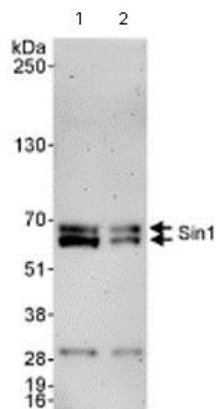
序列相似性

Belongs to the SIN1 family.

细胞定位

Cell membrane. Cytoplasmic vesicle. Nucleus.

图片



Western blot - Anti-SIN1 antibody (ab71152)

All lanes : Anti-SIN1 antibody (ab71152) at 0.1 µg/ml

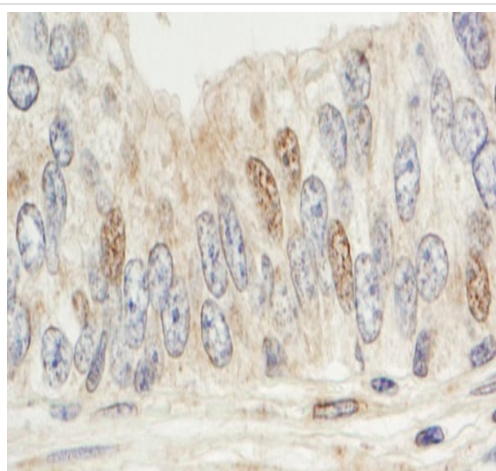
Lane 1 : Whole cell lysate from HeLa cells at 50 µg

Lane 2 : Whole cell lysate from HeLa cells at 15 µg

Predicted band size: 59 kDa

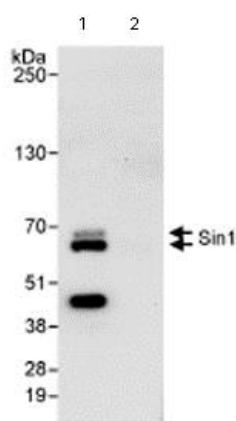
Observed band size: 60,65 kDa

Additional bands at: 30 kDa. We are unsure as to the identity of these extra bands.



Immunohistochemistry (Formalin/PFA-fixed paraffin-embedded sections) - Anti-SIN1 antibody (ab71152)

Immunohistochemistry (Formalin/PFA-fixed paraffin-embedded sections) analysis of human prostate carcinoma tissue labelling SIN1 with ab71152 at 1/1000 (1µg/ml). Detection: DAB.



Immunoprecipitation - Anti-SIN1 antibody (ab71152)

Immunoprecipitation/ Western Blot of SIN1

Lane 1: ab71152 at 3µg/mg whole cell lysate.

Lane 2: Control IgG IP.

Whole cell lysate from HeLa cells at 1mg for IP, 20% of IP loaded.

Subsequent WB detection was performed with 1 µg/ml ab71152.

Chemiluminescence with an exposure time of 30 seconds.

Our Abpromise to you: Quality guaranteed and expert technical support

- Replacement or refund for products not performing as stated on the datasheet
- Valid for 12 months from date of delivery
- Response to your inquiry within 24 hours

- We provide support in Chinese, English, French, German, Japanese and Spanish
- Extensive multi-media technical resources to help you
- We investigate all quality concerns to ensure our products perform to the highest standards

If the product does not perform as described on this datasheet, we will offer a refund or replacement. For full details of the Abpromise, please visit <https://www.abcam.cn/abpromise> or contact our technical team.

Terms and conditions

- Guarantee only valid for products bought direct from Abcam or one of our authorized distributors