


Anti-Sigma1-receptor antibody - C-terminal ab53852

★★★★★ [5 Abreviews](#) [32 References](#) [1 图像](#)

概述

产品名称	Anti-Sigma1-receptor抗体- C-terminal
描述	兔多克隆抗体to Sigma1-receptor - C-terminal
宿主	Rabbit
经测试应用	适用于: WB
种属反应性	与反应: Mouse, Rat 预测可用于: Cow, Dog, Human, Mink 
免疫原	Synthetic peptide corresponding to Rat Sigma1-receptor (C terminal). Database link: Q99720
常规说明	<p>The Life Science industry has been in the grips of a reproducibility crisis for a number of years. Abcam is leading the way in addressing this with our range of recombinant monoclonal antibodies and knockout edited cell lines for gold-standard validation. Please check that this product meets your needs before purchasing.</p> <p>If you have any questions, special requirements or concerns, please send us an inquiry and/or contact our Support team ahead of purchase. Recommended alternatives for this product can be found below, along with publications, customer reviews and Q&As</p>

性能

形式	Liquid
存放说明	Shipped at 4°C. Store at +4°C short term (1-2 weeks). Upon delivery aliquot. Store at -20°C long term. Avoid freeze / thaw cycle.
存储溶液	pH: 7.40 Preservative: 0.1% Sodium azide Constituent: PBS
纯度	Immunogen affinity purified
克隆	多克隆
同种型	IgG

应用

The Abpromise guarantee

Abpromise™承诺保证使用ab53852于以下的经测试应用

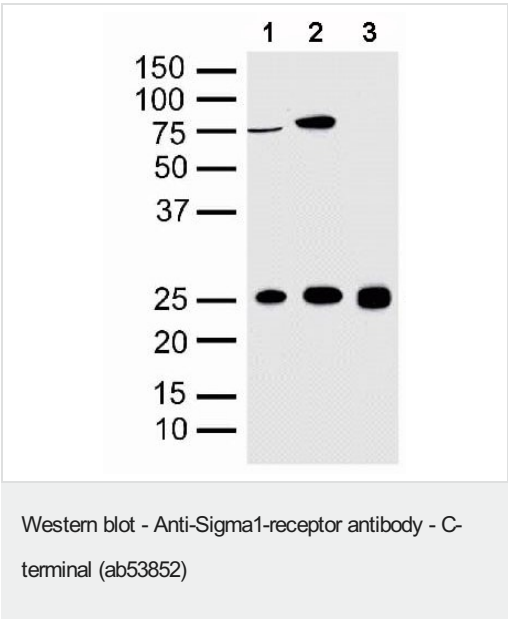
“应用说明”部分 下显示的仅为推荐的起始稀释度;实际最佳的稀释度/浓度应由使用者检定。

应用	Ab评论	说明
WB	★★★★★ (2)	Use a concentration of 2 µg/ml. Detects a band of approximately 25 kDa (predicted molecular weight: 25 kDa).

靶标

功能	Functions in lipid transport from the endoplasmic reticulum and is involved in a wide array of cellular functions probably through regulation of the biogenesis of lipid microdomains at the plasma membrane. Involved in the regulation of different receptors it plays a role in BDNF signaling and EGF signaling. Also regulates ion channels like the potassium channel and could modulate neurotransmitter release. Plays a role in calcium signaling through modulation together with ANK2 of the ITP3R-dependent calcium efflux at the endoplasmic reticulum. Plays a role in several other cell functions including proliferation, survival and death. Originally identified for its ability to bind various psychoactive drugs it is involved in learning processes, memory and mood alteration.
组织特异性	Widely expressed with higher expression in liver, colon, prostate, placenta, small intestine, heart and pancreas. Expressed in the retina by retinal pigment epithelial cells.
疾病相关	Amyotrophic lateral sclerosis 16, juvenile
序列相似性	Belongs to the ERG2 family.
细胞定位	Nucleus inner membrane. Nucleus outer membrane. Endoplasmic reticulum membrane. Lipid droplet. Cell junction. Cell membrane. Cell projection > growth cone. Targeted to lipid droplets, cholesterol and galactosylceramide-enriched domains of the endoplasmic reticulum. Enriched at cell-cell communication regions, growth cone and postsynaptic structures. Localization is modulated by ligand-binding.

图片



All lanes : Anti-Sigma1-receptor antibody - C-terminal (ab53852) at 2 µg/ml

Lane 1 : Mouse brain homogenate

Lane 2 : Rat liver homogenate

Lane 3 : Rat brain homogenate

Predicted band size: 25 kDa

Observed band size: 25 kDa

Additional bands at: 75 kDa. We are unsure as to the identity of these extra bands.

Please note: All products are "FOR RESEARCH USE ONLY. NOT FOR USE IN DIAGNOSTIC PROCEDURES"

Our Abpromise to you: Quality guaranteed and expert technical support

- Replacement or refund for products not performing as stated on the datasheet
- Valid for 12 months from date of delivery
- Response to your inquiry within 24 hours

- We provide support in Chinese, English, French, German, Japanese and Spanish
- Extensive multi-media technical resources to help you
- We investigate all quality concerns to ensure our products perform to the highest standards

If the product does not perform as described on this datasheet, we will offer a refund or replacement. For full details of the Abpromise, please visit <https://www.abcam.cn/abpromise> or contact our technical team.

Terms and conditions

- Guarantee only valid for products bought direct from Abcam or one of our authorized distributors