


# Anti-SHP1 antibody ab227503

[4 References](#) [5 图像](#)

### 概述

产品名称	Anti-SHP1抗体
描述	兔多克隆抗体to SHP1
宿主	Rabbit
经测试应用	适用于: WB, IP, IHC-P
种属反应性	与反应: Mouse, Rat, Human 预测可用于: Cow 
免疫原	Recombinant fragment within Human SHP1 (internal sequence). The exact sequence is proprietary. Database link: <a href="#">P29350</a>
阳性对照	WB: Rat liver extract; HeLa S3, HepG2 and NIH/3T3 whole cell lysates. IHC-P: OVCA xenograft tissue. IP: HeLa whole cell lysate ( <a href="#">ab150035</a> ).
常规说明	<p>The Life Science industry has been in the grips of a reproducibility crisis for a number of years. Abcam is leading the way in addressing this with our range of recombinant monoclonal antibodies and knockout edited cell lines for gold-standard validation. Please check that this product meets your needs before purchasing.</p> <p>If you have any questions, special requirements or concerns, please send us an inquiry and/or contact our Support team ahead of purchase. Recommended alternatives for this product can be found below, along with publications, customer reviews and Q&amp;As</p>

### 性能

形式	Liquid
存放说明	Shipped at 4°C. Store at +4°C short term (1-2 weeks). Upon delivery aliquot. Store at -20°C long term. Avoid freeze / thaw cycle.
存储溶液	pH: 7.00 Preservative: 0.025% Proclin 300 Constituents: 79% PBS, 20% Glycerol (glycerin, glycerine)
纯度	Immunogen affinity purified
克隆	多克隆
同种型	IgG

应用

**The Abpromise guarantee**      **Abpromise™**承诺保证使用ab227503于以下的经测试应用

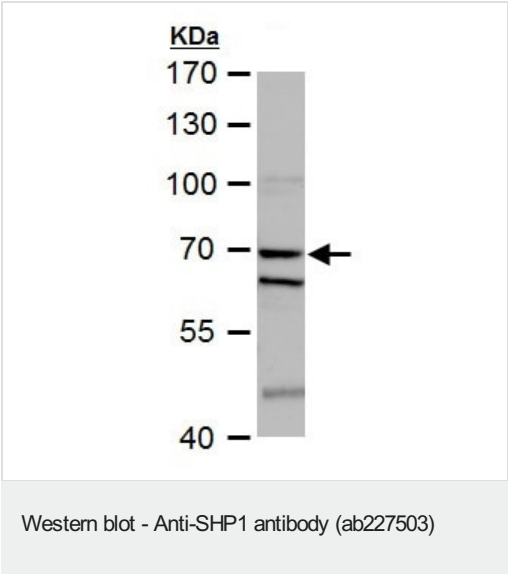
“应用说明”部分 下显示的仅为推荐的起始稀释度;实际最佳的稀释度/浓度应由使用者检定。

应用	Ab评论	说明
WB		1/500 - 1/3000. Predicted molecular weight: 68 kDa.
IP		1/100 - 1/500.
IHC-P		1/100 - 1/1000.

靶标

功能	Plays a key role in hematopoiesis. This PTPase activity may directly link growth factor receptors and other signaling proteins through protein-tyrosine phosphorylation. The SH2 regions may interact with other cellular components to modulate its own phosphatase activity against interacting substrates. Together with MTUS1, induces UBE2V2 expression upon angiotensin II stimulation.
组织特异性	Isoform 1 is expressed in hematopoietic cells. Isoform 2 is expressed in non-hematopoietic cells.
序列相似性	Belongs to the protein-tyrosine phosphatase family. Non-receptor class 2 subfamily. Contains 2 SH2 domains. Contains 1 tyrosine-protein phosphatase domain.
翻译后修饰	Phosphorylated on serine and tyrosine residues.
细胞定位	Cytoplasm. Nucleus. In neurons, translocates into the nucleus after treatment with angiotensin II.

图片

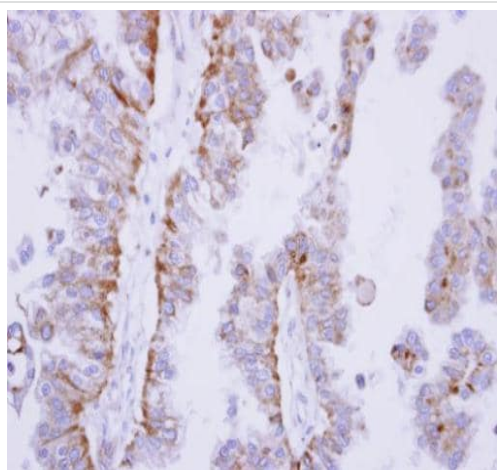


Anti-SHP1 antibody (ab227503) at 1/1000 dilution + Rat liver extract at 50 µg

**Secondary**  
HRP-conjugated anti-rabbit IgG

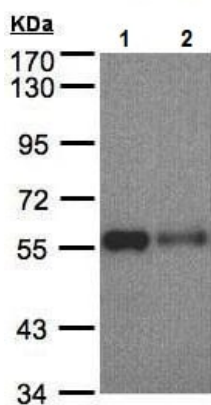
**Predicted band size:** 68 kDa

7.5% SDS-PAGE gel.



Immunohistochemistry (Formalin/PFA-fixed paraffin-embedded sections) - Anti-SHP1 antibody (ab227503)

Paraffin-embedded OVCA (human) xenograft tissue stained for SHP1 using ab227503 at 1/100 dilution in immunohistochemical analysis.



Western blot - Anti-SHP1 antibody (ab227503)

**All lanes :** Anti-SHP1 antibody (ab227503) at 1/500 dilution

**Lane 1 :** HeLa S3 whole cell lysate

**Lane 2 :** HepG2 (human liver hepatocellular carcinoma cell line) whole cell lysate

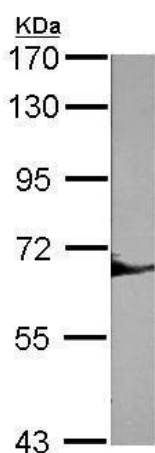
Lysates/proteins at 30 µg per lane.

**Secondary**

**All lanes :** HRP-conjugated anti-rabbit IgG

**Predicted band size:** 68 kDa

7.5% SDS-PAGE gel.



Western blot - Anti-SHP1 antibody (ab227503)

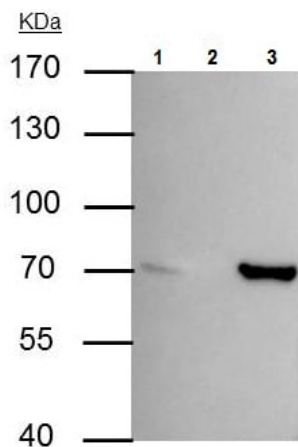
Anti-SHP1 antibody (ab227503) at 1/1000 dilution + NIH/3T3 (mouse embryo fibroblast cell line) whole cell lysate at 30 µg

#### Secondary

HRP-conjugated anti-rabbit IgG

**Predicted band size:** 68 kDa

7.5% SDS-PAGE gel.



Immunoprecipitation - Anti-SHP1 antibody (ab227503)

SHP1 was immunoprecipitated from HeLa (human epithelial cell line from cervix adenocarcinoma) whole cell lysate with 3 µg ab227503. Western blot was performed from the immunoprecipitate using ab227503 at 1/1000 dilution. Anti-Rabbit IgG was used as a secondary reagent.

Lane 1: HeLa whole cell lysate.

Lane 2: Control IP in HeLa whole cell lysate with 3 µg of pre-immune rabbit IgG .

Lane 3: ab227503 IP in HeLa whole cell lysate.

**Please note:** All products are "FOR RESEARCH USE ONLY. NOT FOR USE IN DIAGNOSTIC PROCEDURES"

#### Our Abpromise to you: Quality guaranteed and expert technical support

- Replacement or refund for products not performing as stated on the datasheet

- Valid for 12 months from date of delivery
- Response to your inquiry within 24 hours
- We provide support in Chinese, English, French, German, Japanese and Spanish
- Extensive multi-media technical resources to help you
- We investigate all quality concerns to ensure our products perform to the highest standards

If the product does not perform as described on this datasheet, we will offer a refund or replacement. For full details of the Abpromise, please visit <https://www.abcam.cn/abpromise> or contact our technical team.

## **Terms and conditions**

---

- Guarantee only valid for products bought direct from Abcam or one of our authorized distributors