


Anti-SHARPIN antibody ab125188

[5 References](#) [2 图像](#)

概述

产品名称	Anti-SHARPIN抗体
描述	兔多克隆抗体to SHARPIN
宿主	Rabbit
经测试应用	适用于: WB, IP
种属反应性	与反应: Human 预测可用于: Horse, Cow, Pig, Chimpanzee, Ferret, Rhesus monkey, Gorilla, Orangutan, Bat 

免疫原	Synthetic peptide, corresponding to a region within amino acids 25-75 of Human SHARPIN (NP_112236.3).
阳性对照	HeLa, Jurkat and 293T whole cell lysates
常规说明	<p>The Life Science industry has been in the grips of a reproducibility crisis for a number of years. Abcam is leading the way in addressing this with our range of recombinant monoclonal antibodies and knockout edited cell lines for gold-standard validation. Please check that this product meets your needs before purchasing.</p> <p>If you have any questions, special requirements or concerns, please send us an inquiry and/or contact our Support team ahead of purchase. Recommended alternatives for this product can be found below, along with publications, customer reviews and Q&As</p>

性能

形式	Liquid
存放说明	Shipped at 4°C. Upon delivery aliquot and store at -20°C. Avoid freeze / thaw cycles.
存储溶液	pH: 7 Preservative: 0.09% Sodium azide Constituent: 99% Tris citrate/phosphate pH 7 to 8
纯度	Immunogen affinity purified
克隆	多克隆
同种型	IgG

应用

The Abpromise guarantee

Abpromise™承诺保证使用ab125188于以下的经测试应用

“应用说明”部分 下显示的仅为推荐的起始稀释度;实际最佳的稀释度/浓度应由使用者检定。

应用	Ab评论	说明
WB		1/2000 - 1/10000. Predicted molecular weight: 40 kDa.
IP		Use at 2-10 µg/mg of lysate.

靶标

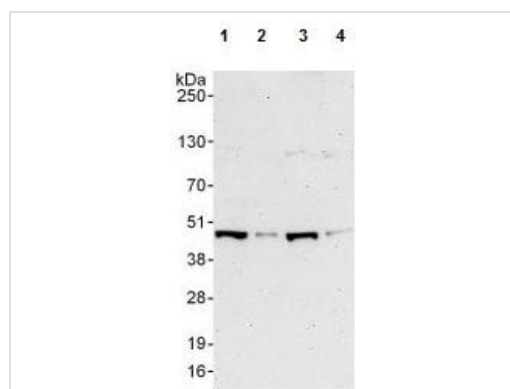
功能 May have a role in normal immune development and control of inflammation.

组织特异性 Highly expressed in skeletal muscle and placenta and at lower levels in brain, heart, colon without mucosa, thymus, spleen, kidney, liver, small intestine, lung and peripheral blood leukocytes.

序列相似性 Contains 1 RanBP2-type zinc finger.

细胞定位 Cytoplasm. Enriched at synaptic sites in mature neurons where it colocalizes with SHANK1.

图片



Western blot - Anti-SHARPIN antibody (ab125188)

All lanes : Anti-SHARPIN antibody (ab125188) at 0.1 µg/ml

Lane 1 : HeLa whole cell lysate at 50 µg

Lane 2 : HeLa whole cell lysate at 15 µg

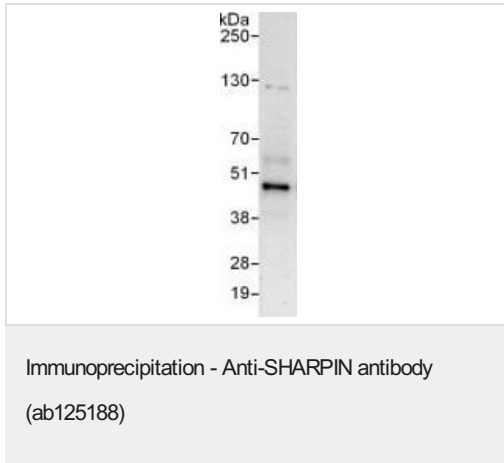
Lane 3 : 293T whole cell lysate at 50 µg

Lane 4 : Jurkat whole cell lysate at 50 µg

Developed using the ECL technique.

Predicted band size: 40 kDa

Exposure time: 3 minutes



ab125188, at 6 µg/mg lysate, detecting SHARPIN in HeLa cell lysate (1 mg of immunoprecipitate, 20% loaded in the lane) by Immunoprecipitation.

For the subsequent Western blot, ab125188 was used at 1 µg/ml.

The blot was developed using the ECL technique, with an exposure time of 30 seconds.

Please note: All products are "FOR RESEARCH USE ONLY. NOT FOR USE IN DIAGNOSTIC PROCEDURES"

Our Abpromise to you: Quality guaranteed and expert technical support

- Replacement or refund for products not performing as stated on the datasheet
- Valid for 12 months from date of delivery
- Response to your inquiry within 24 hours
- We provide support in Chinese, English, French, German, Japanese and Spanish
- Extensive multi-media technical resources to help you
- We investigate all quality concerns to ensure our products perform to the highest standards

If the product does not perform as described on this datasheet, we will offer a refund or replacement. For full details of the Abpromise, please visit <https://www.abcam.cn/abpromise> or contact our technical team.

Terms and conditions

- Guarantee only valid for products bought direct from Abcam or one of our authorized distributors